

PELTY BAY

Arviligjuat

Location

68°32' N, 89°49' W. Elevation 15 m at the airstrip. 177 air km SE of Spence Bay, 1312 air km NE of Yellowknife, in the Kitikmeot Region.

On the west side of Simpson Peninsula where the Kugaardjuk River enters St. Peter Bay.

Topography

On low-lying limestone terrain, perched on a small hill near the mouth of the river.

Climate

Average annual precipitation: 10.3 cm rainfall, 127 cm snowfall, 23.0 cm total precipitation. July mean high 9.7°C, low 2.9°C. January mean high -29.7°C, low -35.6°C.

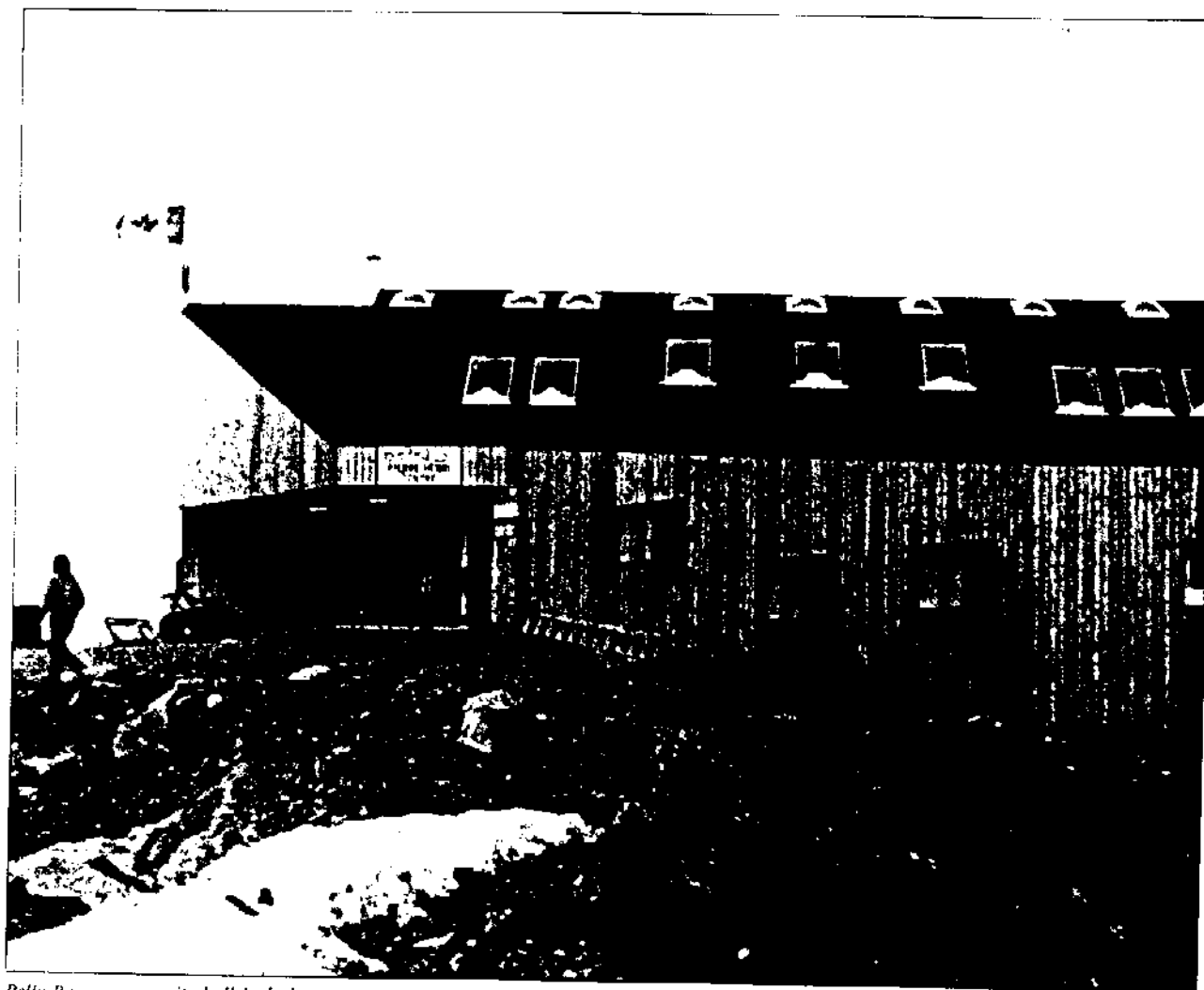
History

The people of Pelly Bay are Netsilingmiut, whose seal-dependent way of life changed very little through what were the whaling and trapping periods elsewhere in the North. Several films have been made in which the people of Pelly Bay re-enacted traditional activities with the skin clothing and bone implements of the pre-contact era.

The first recorded contact by qallunaat travellers with the people of Pelly Bay was in 1829, when the expedition of the Englishman, John Ross, wintered in the area. It was not until 1935, however, that Father Henry, an Oblate missionary, became the first qallunaat to actually reside at Pelly Bay. Father Henry built a small stone church still to be seen in the community. Father Vandavelde, who arrived in

1938 and replaced Father Henry in 1945, was the community's only white resident until 1961 when the school was built, and until a few years later, the mission, the school and one powerhouse-warehouse were the only permanent buildings in the community.

In recent years, a small commercial char fishery and fine ivory carving have come to supplement the hunting/trapping-based economy of Pelly Bay. Despite the efforts of a strong and innovative co-operative association, Pelly Bay also has the unfortunate distinction of having what is probably the highest cost of living of any community in the North, largely due to its inaccessibility to barge traffic.



Pelly Bay's community hall includes a gym, meeting room and community radio. Outcrop

Demography

Population, June 1981, 257. June 1985, 268. 1986 Census, 297. June 1988 GNWT estimate: 327.

1986 sex distribution: 56% male, 44% female.

1986 age distribution: 0-4, 14%, 5-14, 29%; 15-64, 54%; 65+, 3%.

1987 ethnic distribution: 0% Dene/Metis, 96% Inuit, 4% non-native.

Languages spoken: Inuktitut, English.

Political Organization

Hamlet status, April 1, 1972.

Mayor: Makabe Nartok.

Senior Administrative Officer: Guido Tigvarark.

Hamlet Office: (403) 769-6281. Fax (403) 769-6098.

Liquor plebiscite, September 12, 1979: prohibition.

MLA John Ningark (Natilikmiot); MP Jack Anawak. LIB (Nunatsiag).

Economy

Major Activities — Commercial fishing, hunting, carving/handicrafts.

Banks — None.

Co-ops — Koomiut Co-operative Association.

Renewable Resources — Fish: Arctic Char, Lake Trout.

Marine mammals: Ring Seal, Harbour Seal, Bearded Seal, Beluga, Narwhal.

Game: Caribou, Wolf, Fox, Polar Bear.

Quotas: Caribou, 60; Muskox, 5; Polar Bear, 10-15.

Kurtairajuark HTA.

Total number of trappers (1987-88): 18.

Total dollars earned: \$12,500.

Other renewable resources: ivory and bone (carving materials).

Non-Renewable Resources — Minerals: nothing known.

Tourism: Arts and crafts: noted for fine miniature ivory carvings.

Prices and Income — Private Households Average Income, 1985: \$26,095. Food prices, 1987: 92% higher than Yellowknife.

Local Businesses — The following services are provided by locally based business in addition to those noted above. This list includes both primary and secondary businesses and does not include all services

available. For more information consult the NWT Business Directory.

Arts and crafts manufacturing, general retail, food, recreational vehicles, gifts, hotels, outfitters, amusement centres.

Infrastructure

Power — NWTPC (Area Office Cambridge Bay), diesel generator, 740kW capacity. 1989 rates, Domestic Service (non-government): 35.74¢/kWh for the first 300kWh per month, 57.38¢/kWh for all over 300kWh per month; Commercial Service (non-government): 57.94¢/kWh; Domestic Service (government): 70.00¢/kWh, Commercial Service (government): 70.00¢/kWh.

Water — Sources: a stream 2.4 km S of the Hamlet, summer; a lake at the far end of the airstrip, early winter; Farther Lake, winter. Batch chlorinated in delivery truck tank. Newer homes have 1,135 litre tanks and plumbing, majority use 205 litre barrels. Contracted to Hamlet. New intake and truckfill station in 1986.

Sanitation — Piped sewage collection. Dump 2 km from the Hamlet. Contracted to Hamlet.

Fuel — Capacity in use to September 30, 1989: P-50, 1,381,169 litres; gas, 461,540 litres. Resupply aircraft. 1989 GNWT retail prices: P-50 heating, \$.72 per litre; diesel, \$.88; gasoline, \$.86; naphtha, \$1.04.

Transportation

Air — Take-offs and landings, 1988: 1,037. Airport Operator: Hamlet of Pelly Bay (GNWT).

Airport Facilities: Unlicensed 1448 m x 30 m gravel and clay runway with parking ramp; Airfield lights including runway edge lights, rotating beacon and lighted wind sock; Navaid — NDB; Passenger shelter.

Services: Community Airport Radio Station (CARS) - Weather/Communications; Scheduled airfield maintenance.

Scheduled Service: First Air via Iqaluit/Yellowknife.

Communications

Postal code: X0E 1K0. Service 3 times a week. Telephone: Northwestel (Anik), local and long distance. CBC Radio (Anik), community radio. CBC Television (Anik).

Protection Services

Police: RCMP, Spence Bay.

Other legal and court services: Mackenzie Court Workers Services, Yellowknife.

Fire Chief: Raymond Kayaksark.

Fire Department: volunteer 10 person brigade; no hydrant system; triple combination pumper; telephone.

Medical/Social Services

Community Health Centre: two beds, one bassinet, one crib.

Medical Staff: three person

Social Services Facilities: one person Community Social Services Office.

Church: Roman Catholic Mission.

Education

School: Kugaardjuq, K-9, Principal, George Hinton.

Student Enrolment (1988/89): 95.

Teachers: 6, with 2 classroom assistants.

Local Education Authority: Pelly Bay Education Council.

School year (1989/90): August 14-June 11. Vocational and Continuing Education: Arctic College extension program.

Housing and Accommodation

NWT Housing Corporation units (1989): 57.

HAP housing allocations 1980-89: 5.

GNWT staff housing units: 7 houses.

Commercial accommodation: Inukshuk Inn, accommodates 18, restaurant.

Recreation and Culture

Community complex, playfield, playground. Pelly Bay Museum. Christmas and Easter games. Active recreation committee.