



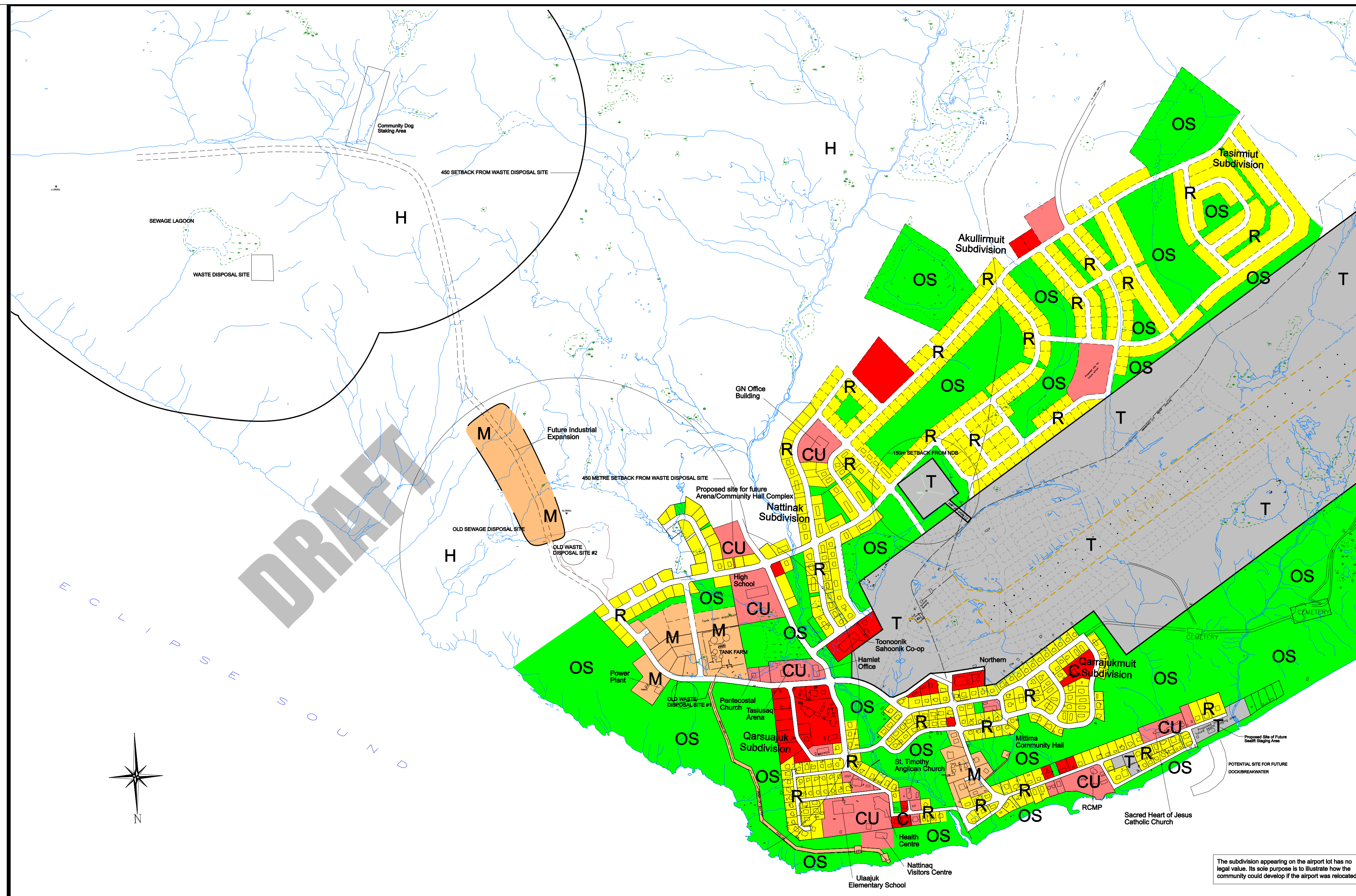
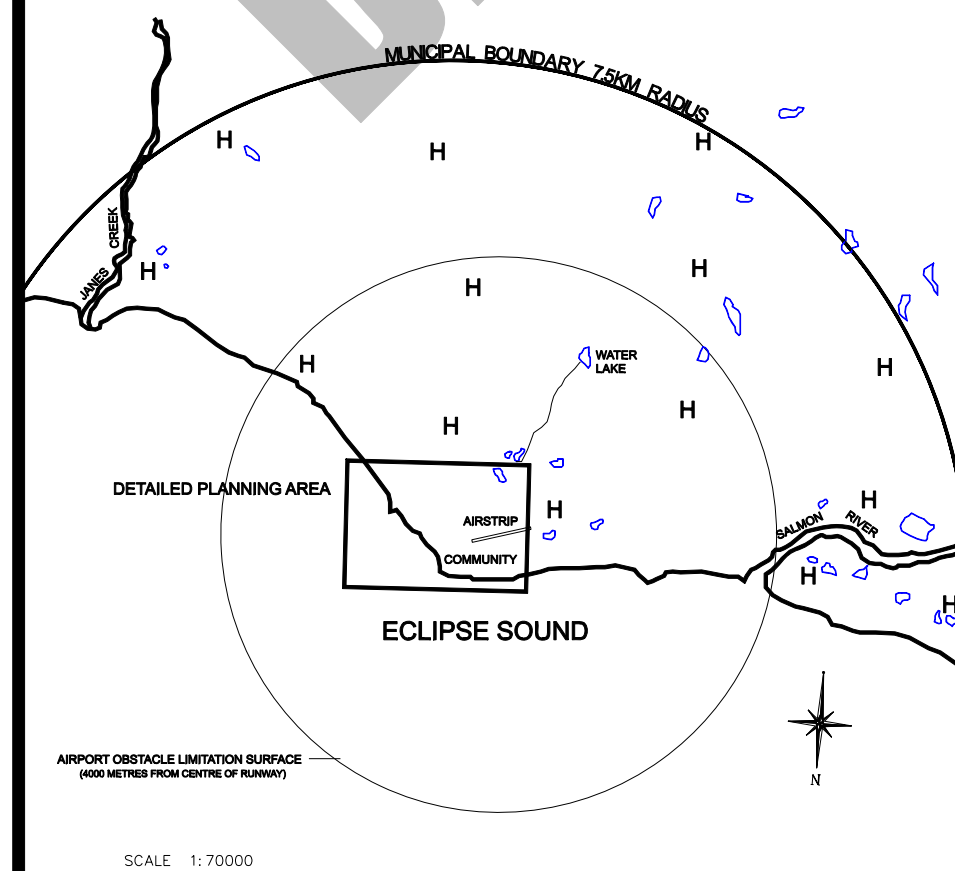
LEGEND:

- | | |
|----|----------------|
| R | RESIDENTIAL |
| CU | COMMUNITY USE |
| C | COMMERCIAL |
| M | INDUSTRIAL |
| T | TRANSPORTATION |
| OS | OPEN SPACE |
| H | HINTERLAND |

SCALE: 1 : 4000

CONTOUR INTERVAL : 0.5m

MUNICIPAL BOUNDARY:



The subdivision appearing on the airport lot has no legal value. Its sole purpose is to illustrate how the community could develop if the airport was relocated.

HAMLET OF POND INLET ZONING BY-LAW, ZONING CHART										SCHEDULE 3	
		ZONES									
DEVELOPMENT OFFICER APPROVAL	COUNCIL APPROVAL	USES & REGULATIONS	RESIDENTIAL R	COMMUNITY USE CU	COMMERCIAL C	INDUSTRIAL M	TRANSPORTATION T	OPEN SPACE OS	HINTERLAND H		
		PERMITTED USE: Development permit applications for these uses shall be approved provided the proposed use of land or building conforms with the provisions of this by-law.	1. Single-family and two-family residential units. 2. Daycare centre 3. Neighbourhood convenience store 4. Park or playground* 5. Accessory buildings related to the above uses	1. Daycare centre 2. Accessory buildings related to the above use	1. Private office 2. Neighbourhood stores and arts & craft shop 3. Restaurant 4. Repair shop 5. Personal service establishment 6. Accessory buildings related to the above uses	1. Commercial, municipal, and heavy equipment garage and repair shop 2. Warehouse 3. Storage yard for machinery or building material 4. Gas station 5. Accessory buildings related to the above uses	1. Conservation area 2. Playground, park, picnic area 3. Snow disposal site 4. Shrubs and shade 5. Snow disposal area	1. Telecommunication facility 2. Navigation facility 3. Dog staking area 4. Ground stoopole 5. Snow disposal area 6. Shade and shade			
		CONDITIONAL USE: Council shall decide on conditions of use and development permit applications based on the merits of each application in accordance with the provisions of this by-law and the policies of the Community Plan.	1. Multi-family residential units. 2. Home occupation 3. Church or religious institution 4. Small business 5. Accessory buildings related to the above uses 6. Other uses which are considered by Council to fit this zone	1. School 2. Church or mission 3. Health centre 4. Indoor recreational facility 5. Fire hall 6. Police station 7. Public office 8. Community center 9. Accessory buildings related to the above uses 10. Accessory buildings which will strengthen the role of this zone	1. Hotel 2. Warehouse storing non-hazardous material 3. Public office 4. Daycare centre 5. Tourism facility 6. Large store 7. Fuel retail outlets 8. Community freezer 9. Radio & TV station 10. Office or business combined with caretaker's residence 11. Billiard and golf ball arcade 12. Accessory building related to the above uses 13. Other uses which Council feels will strengthen the role of this zone	1. Telecommunication facility 2. Power plant 3. Radio tower 4. Construction work camp* 5. Processing plant (fish, meat)* 6. Weather station 7. Accessory building related to the above uses 7. Office combined with Industrial use* 8. Caretaker's residential unit combined with Industrial uses* 9. Other uses which are considered by Council to fit this zone Not permitted within the 450m setback of the old waste disposal site.	AIRPORT 1. Airstrip 2. Airport terminal building, aviation support facilities, such as: antenna, beacon, tower, windsock 3. Weather station 4. Warehouse, garage associated with airport SEALIFT 1. Dock, breakwater 2. Staging area Other uses which are considered by Council to fit this zone	1. Outdoor recreational facility 2. Historic and cultural sites 3. Cemetery 4. Other uses which are considered by Council to fit this zone	1. Cemetery 2. Solid waste disposal site and sewage disposal 3. Water supply facility 4. Gravel site and stockpile 5. Historic and cultural site 6. Tourism facility and lodge 7. Terrified park 8. Construction work camp 9. Other uses which are considered by Council to fit this zone		
		MINIMUM LOT SIZE * Minimum lot size does not apply	750 square meters * Minimum lot size does not apply	750 square meters 2 storeys	800 square meters 2 storeys	800 square meters 2 storeys	N/A 1 storey	N/A 1 storey	N/A 3 storeys		
		MINIMUM YARD SETBACKS Front yard Side yard Rear yard	i) 6 metres ii) 6 metres iii) 6 metres	i) 6 metres ii) 6 metres iii) 6 metres	i) 8 metres ii) 6 metres iii) 6 metres	i) 9 metres ii) Fire separation distance applies iii) Fire separation distance applies	i) 9 metres ii) Fire separation distance applies iii) Fire separation distance applies	i) 9 metres ii) Fire separation distance applies iii) Fire separation distance applies	i) 3 metres ii) Fire separation distance applies iii) Fire separation distance applies		
		FIRE SEPARATION DISTANCE:	1. NO OPENINGS, NON COMBUSTIBLE SIDING: 2. NO OPENINGS, COMBUSTIBLE SIDING: 3. ONE OPENING, ONE WALL, NO OPENINGS IN WALL OF ADJACENT BUILDING - NON COMBUSTIBLE SIDING: 4. ONE OPENING, ONE WALL, NO OPENINGS IN WALL OF ADJACENT BUILDING - COMBUSTIBLE SIDING: 5. OPENINGS BOTH WALLS - NON COMBUSTIBLE SIDING: 6. OPENINGS BOTH WALLS - COMBUSTIBLE SIDING:	7 metres 6 metres 8 metres 9 metres 9 metres 12 metres	7 metres 6 metres 8 metres 9 metres 9 metres 12 metres	7 metres 6 metres 8 metres 9 metres 9 metres 12 metres	7 metres 6 metres 8 metres 9 metres 9 metres 12 metres	7 metres 6 metres 8 metres 9 metres 9 metres 12 metres	7 metres 6 metres 8 metres 9 metres 9 metres 12 metres		
						Regarding archaeological sites: whenever during construction archaeological artifacts are found, they must be reported by contacting local development officer and the Chief Archaeologist with the Department of Culture, Language, Elders and Youth. Medium height regulations do not apply to antennae, chimneys, weather equipment, monuments, public utility poles, flag poles, telecommunication towers, tanks, church steeples.			Notwithstanding the above regulations, all buildings within the airport Obstacle Limitation Surface Area and the approach and landing path shall not exceed the Transport Canada height limitation. Notwithstanding the above regulations, any building or use located within the 450m setback of the current and the old waste disposal sites shall conform to Sections 8 and 28(b) of the Public Health Act.		