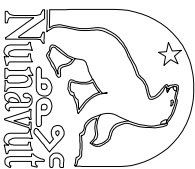




**THE ASSOCIATION OF  
PROFESSIONAL ENGINEERS,  
GEOLOGISTS AND GEOPHYSICISTS  
OF THE NORTHWEST TERRITORIES  
PERMIT NUMBER  
P 003  
FERGUSON SIMEK  
CLARK**

No.	0	ISSUED FOR TENDER	MAY 22 2002		
	B	90% REVIEW	APR 30 2002		
A	40% REVIEW		APR 8 2002		
No.	REVISION		DATE	BY	APP'D

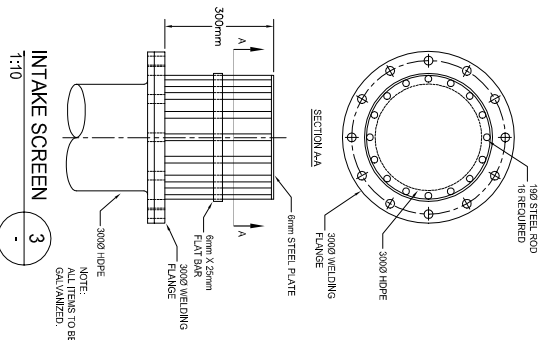


# 409 TITLE POND INLET SEWAGE LAGOON EXPANSION AND UPGRADE

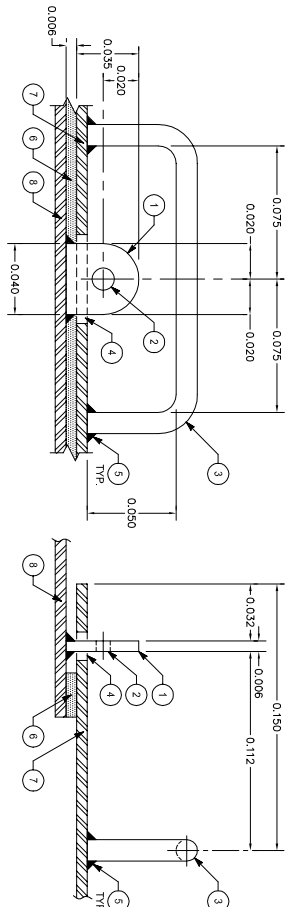
POND INLET, NU

HDPE  
ACCESS MANHOLE  
MISC. DETAILS

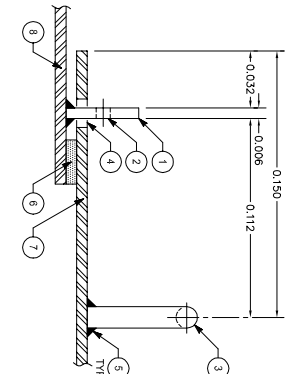
DESIGNED BY	SCALE
DRAWN BY	AS SHOWN
RW	DATE
CHECKED BY	MAY 22, 2002
WO	CLIENT PROJECT NO.
	02-2000
F.S.C. FILE NO.	F.S.C. JOB NO.
20002420-01.dwg	2002-0420



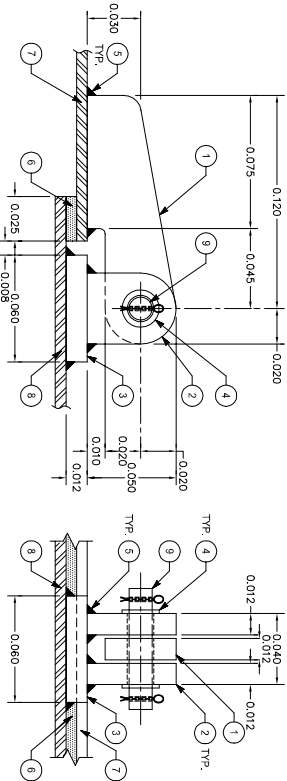
INTAKE SCREEN  
1:10



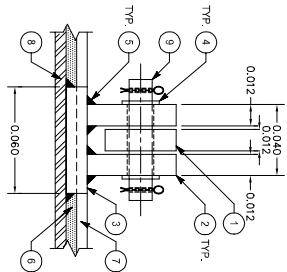
**FRONT VIEW**



## SIDE VIEW



### SIDE VIEW



REAR VIEW

- NOTES**
1. ACCESS MANHOLE I/D & HATCH ANGLE FRAMING ARE NOT SHOWN FOR CLARITY. FOR DETAIL REFER TO FRAMING PLAN AS PER DETAIL.
  2. ALL WELDS AND ABRASIONS TO BE REPAIRED WITH TWO COATES OF GALVCON.

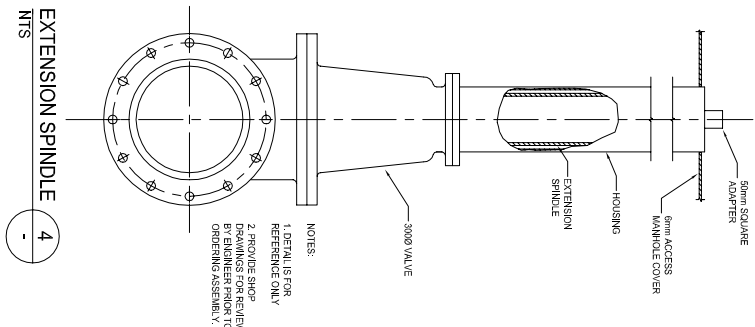
- KEYNOTES**
- 1mm THK. GALV. STEEL STAPLE
  - 12.5mm DIA. DRILLED HOLE FOR PADLOCK
  - 12.5mm DIA. GALV. STEEL BAR LIFTING HANDLE
  - 50mmx15mm SLOT HOLE
  - 6mm FILLET WELD ALL AROUND (TYP.)
  - 25mm wide x 6mm THK. RUBBER GASKET MASTIC TO UNDERSIDE OF HATCH COVER (TYPICAL 4 SIDES)
  - 6mm THK. GALV. STEEL PLATE ACCESS HATCH COVER
  - 6mm THK. GALV. STEEL PLATE MANHOLE LID

- NOTES**
1. ACCESS MANHOLE LID & HATCH ANGLE FRAMING ARE NOT SHOWN FOR CLARITY. FOR DETAIL REFER TO FRAMING PLAN AS PER DETAIL.
  2. ALL WELDS AND ABRASIONS TO BE REPAIRED WITH TWO COATES OF GALVCON.

1. 12mm THK. GALV. STEEL HINGE ARM C/W HOLE FOR DIA. PIN (TYP. OF 2)
2. 12mm THK. GALV. STEEL HINGE ARM SUPPORT C/W DIA. PIN (TYP. OF 2)
3. 60mm x 60mm x 12mm THK. GALV. STEEL BASE PLATE
4. GALV. STEEL WELD AL AROUND
5. 6mm FILLET WELD (TYP.)
6. 25mm WID. x 6mm THK. RUBBER GASKET MASTIC TO UNDERSIDE OF HATCH COVER (TYPICAL 4 SIDES)
7. 6mm THK. GALV. STEEL PLATE ACCESS HATCH COVER
8. 6mm THK. GALV. STEEL PLATE MANHOLE LID
9. 13mm DIA. GALV. STEEL PIN C/W COTTER PIN

## HASP & LIFTING HANDLE DETAIL

### ACCESS HATCH COVER HINGE DETAIL



EXTENSION SPINDLE 4  
NTS -

- NOTES:
1. DETAILS FOR REFERENCE ONLY
  2. PROVIDE SHOP DRAWINGS FOR REVIEW BY ENGINEER PRIOR TO ORDERING ASSEMBLY.