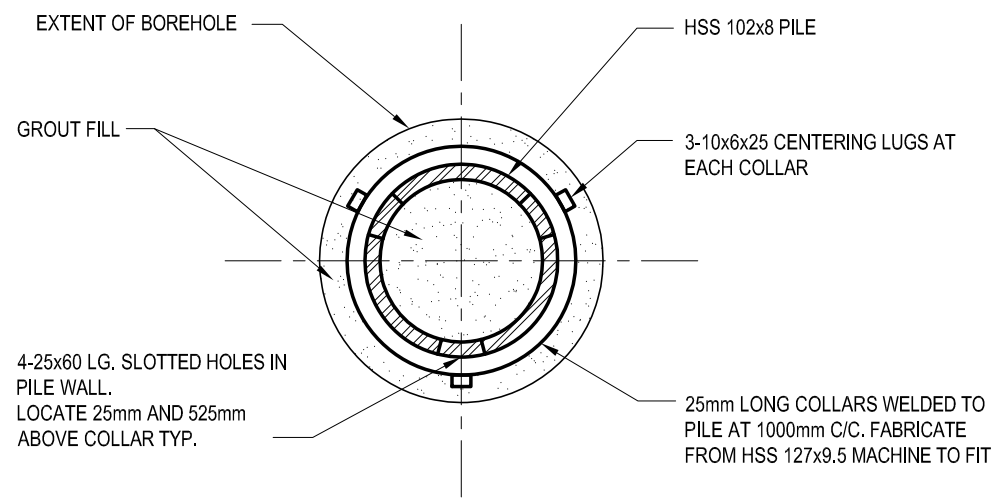
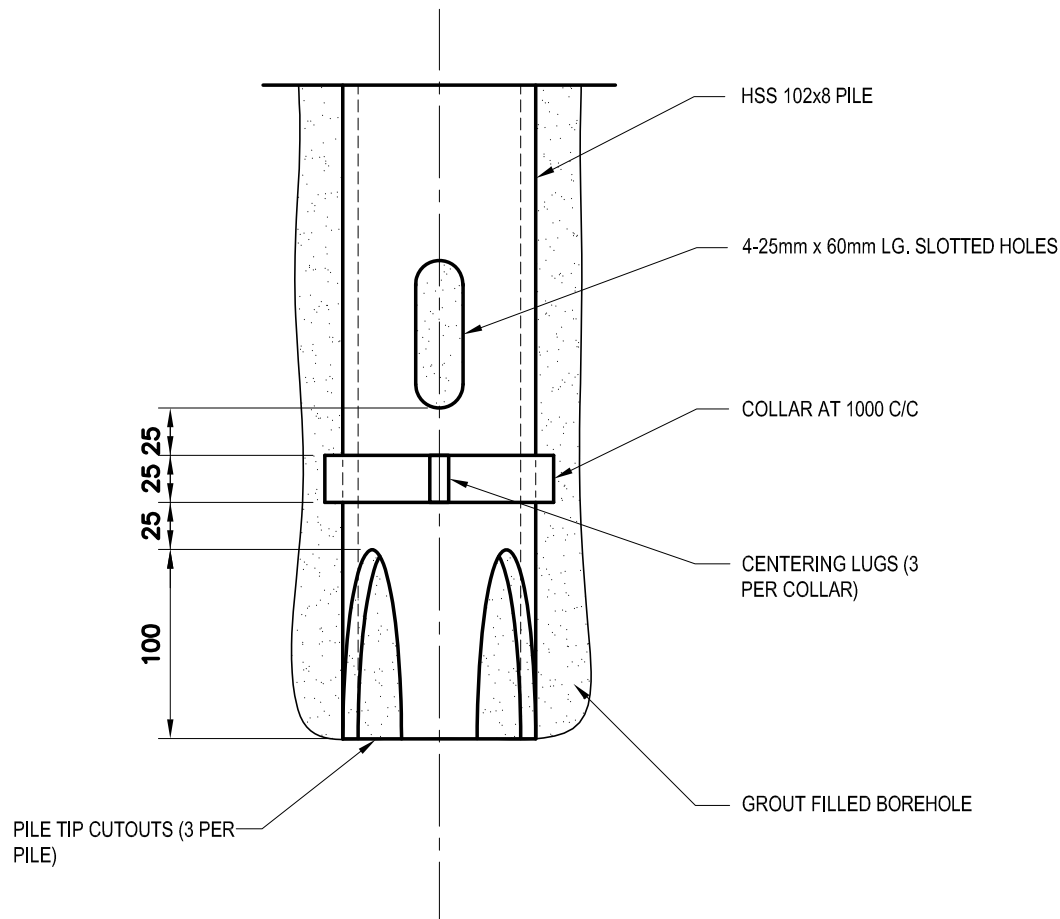


PILE FOUNDATION ELAVATION
SCALE: 1 : 30



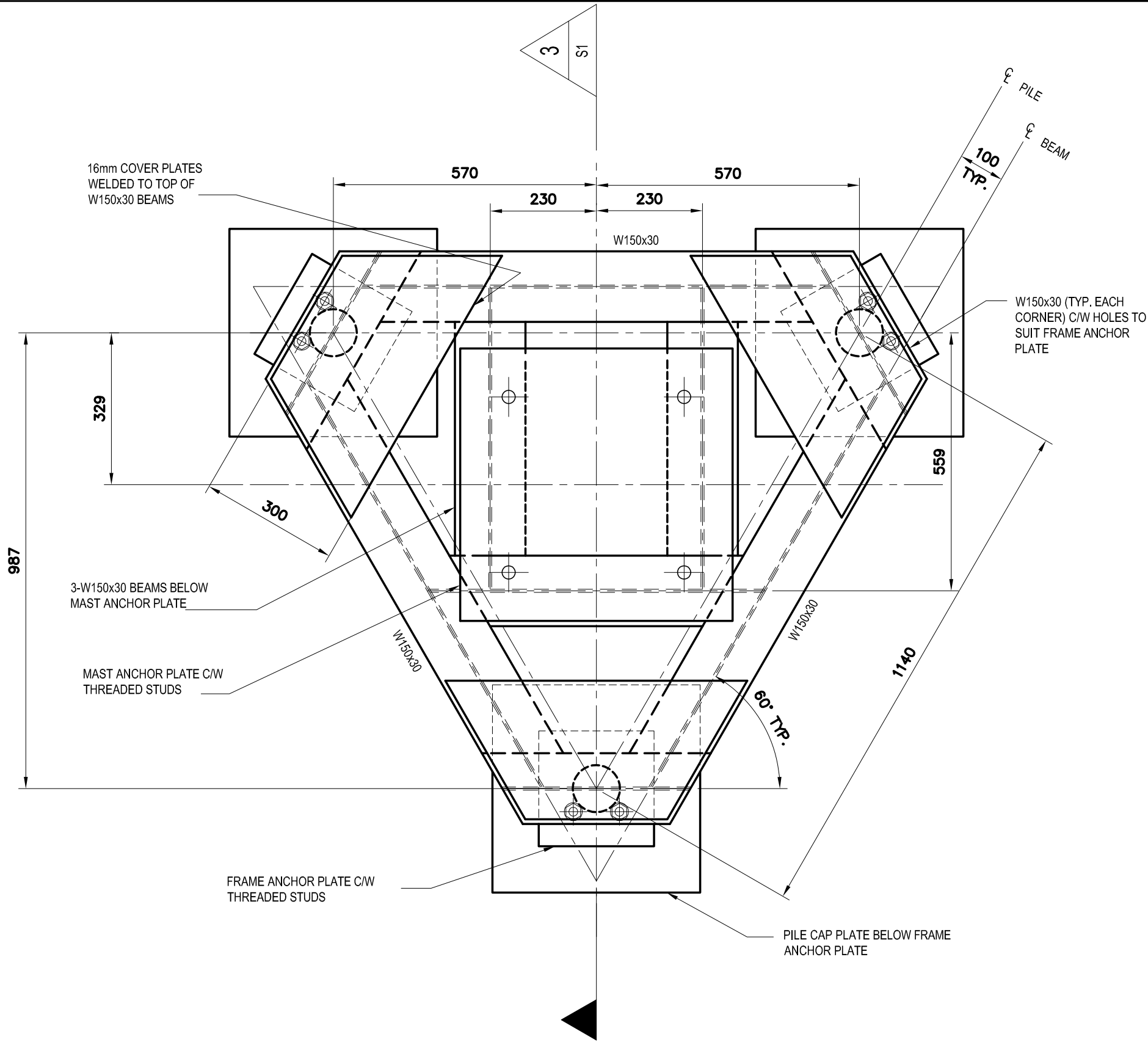
SECTION
SCALE: 1 : 4



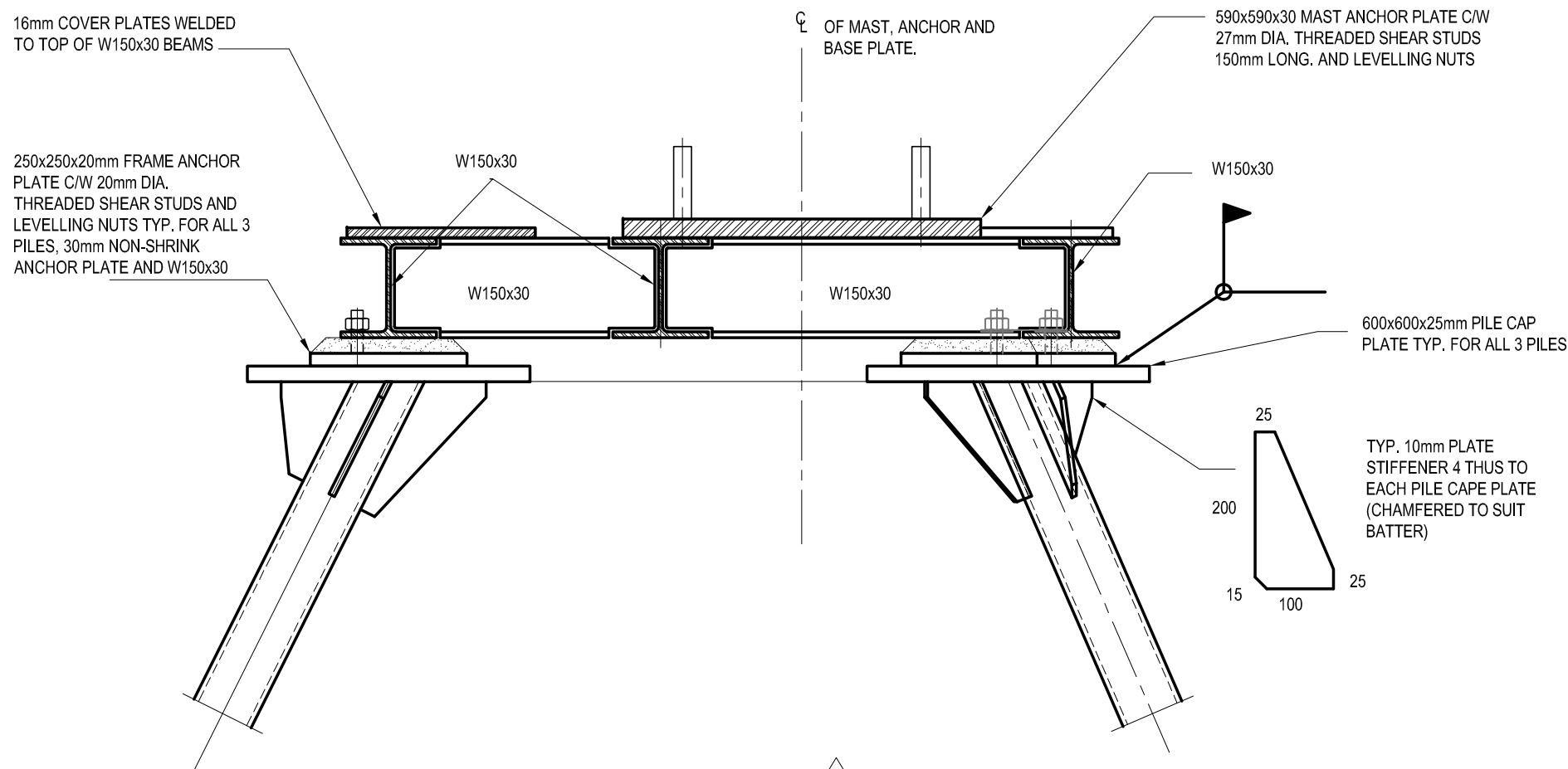
DETAIL

SCALE: 1 : 4

ORIGINAL SIGNED
BY ENGINEER



SOLAR MAST PLATFORM PLAN
SCALE: 1 : 10



SECTION

SCALE: 1 : 10

SLS FORCES AT TOP OF PILE CAP PLATE (ACTING ON PILE GROUP)

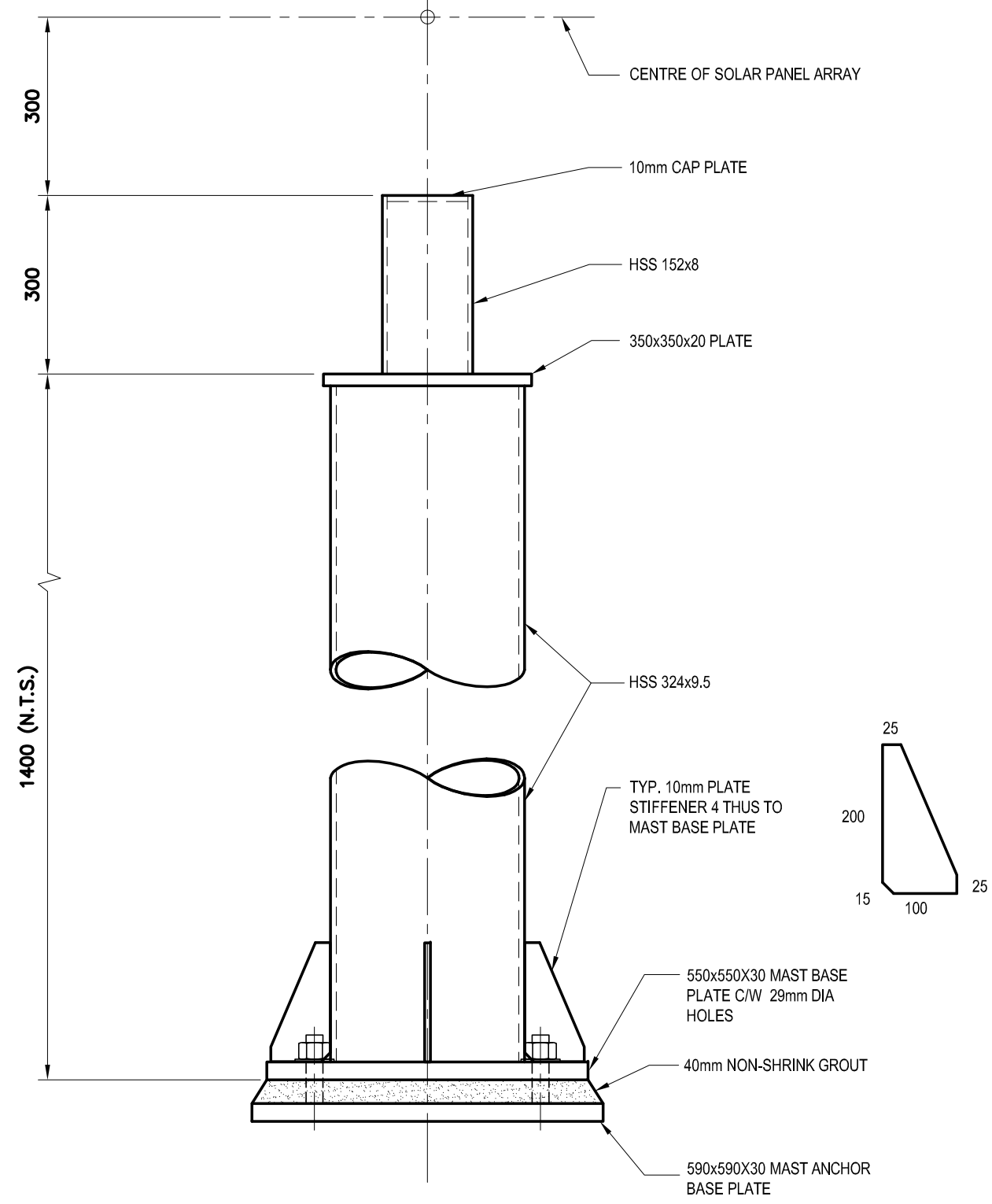
TOTAL MAXIMUM MOMENT = 57 kN.m
TOTAL MAXIMUM HORIZONTAL FORCE = 27 kN
TOTAL MAXIMUM VERTICAL FORCE = 14 kN
ALLOWABLE ADFREEZE BONDS (AMEC EMAIL 21ST APRIL 2008)
0m TO 2m = 0 kPa
2m TO 6m = 30 kPa
BELOW 6m = 45 kPa

ENVIRONMENTAL DATA

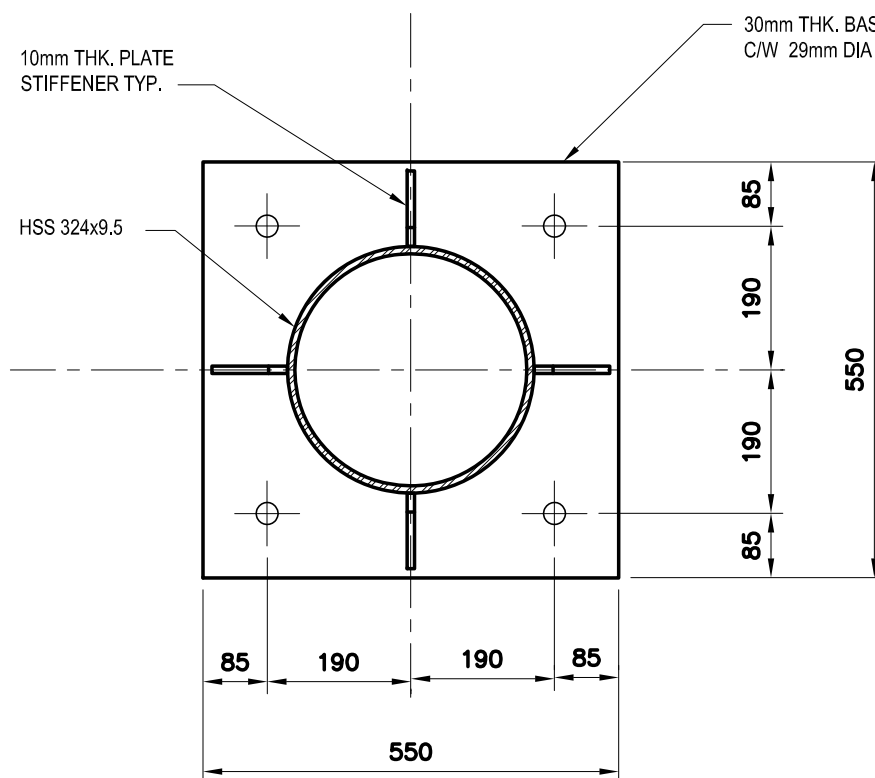
WIND q_{z0} = 0.69 kPa
SNOW S_s = 2.9 kPa
RAIN S_r = 0.2 kPa

SOLAR PANEL DATA

SOLAR PANELS (3X4 ARRAY) = 2.0 kN (SPECIFIED)
SOLAR PANEL TRACKER FRAME = 1.3 kN (SPECIFIED)
PLAN AREA OF SOLAR PANEL ARRAY = 3.3m V x 4.7m H



SOLAR MAST ELEVATION
SCALE: 1 : 10



SOLAR MAST BASE PLATE PLAN
SCALE: 1 : 10

STRUCTURAL STEEL

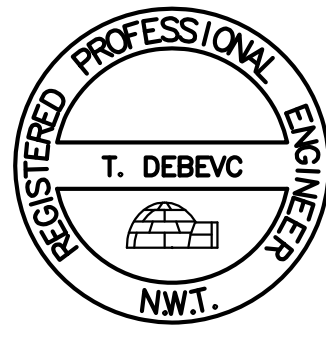
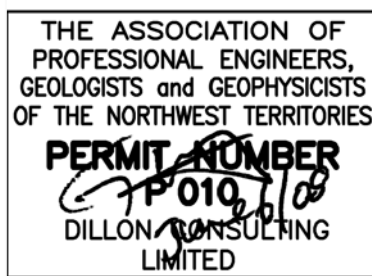
- PERFORM STRUCTURAL STEEL WORK IN ACCORDANCE WITH CAN/CSA-S16-01.
- ALL FABRICATION AND WELDING SHALL CONFORM TO CSA W59-03 AND BE PERFORMED BY A COMPANY CERTIFIED BY AND WELDERS QUALIFIED IN ACCORDANCE WITH CSA W47.1-03 FOR DIVISION 1 OR DIVISION 2.1.
- FILLET WELDS SHALL NOT BE LESS THAN 8mm.
- WELDING ELECTRODES TO BE 'BASIC' LOW HYDROGEN TYPE TO CSA W48 SERIES, COMPATIBLE WITH STEEL TO BE WELDED.
- STRUCTURAL SHAPES TO CSA G40.21-04, GRADE 350W.
- STRUCTURAL PLATES TO CSA G40.21-04, GRADE 300W (MINIMUM).
- HOLLOW STRUCTURAL SECTIONS TO CAN/CSA G40.21-04, GRADE 350W, CLASS C.
- HIGH TENSILE BOLTS, NUTS AND WASHERS TO ASTM A325-00.
- SUBMIT SHOP DRAWINGS STAMPED AND SIGNED BY A PROFESSIONAL ENGINEER REGISTERED IN ONTARIO AND EXPERIENCE IN DESIGN OF STRUCTURAL STEEL CONNECTIONS DESIGNED FOR FULL SHEAR CAPACITY OF SECTION.
- STRUCTURAL STEEL TO BE GALVANIZED TO CAN/CSA-G164-M82.
- FIELD TOUCH-UP OF GALVANIZED FINISH WITH TWO COATS OF GALVAFROID BY WR MEADOWS.

Conditions of Use

Verify elevations and/or dimensions on drawing prior to use.
Report any discrepancies to Dillon Consulting Limited.

Do not scale dimensions from drawing.

Do not modify drawing, re-use it, or use it for purposes other than those intended at the time of its preparation without prior written permission from Dillon Consulting Limited.



No.	ISSUED FOR	DATE	BY
3	ISSUED FOR TENDER	06/06/08	GS
2	ISSUED FOR 100% CLIENT REVIEW	04/30/08	GS
1	ISSUED FOR CLIENT REVIEW	03/15/08	GS

DESIGN	REVIEWED BY
GS	GS
DRAWN	CHECKED BY
NTB	GS
DATE	JUNE 2008
SCALE	AS SHOWN

TALOYOAK WATER TREATMENT PLANT
TALOYOAK, NUNAVUT

PROJECT NO.
07-8107-2000

SOLAR PANEL SUPPORT AND PILING DETAILS

SHEET NO.

204