

APPROVED BY \_\_\_\_\_ DATE \_\_\_\_\_

300 MINIMUM CUT BACK OF INSULATION

2

107 107

4@ GALVANIZED STEEL PLATE  
3 x 50 x 230 BEND AND  
DRILL TO FIT FLANGE BOLTS

PUMP POWER CABLE  
BOLT AS REQUIRED BY  
ANSI FOR 100 FLANGE

100 PVC PIPE

100 PVC  
STEEL COLLAR

100 HDPE STUB END  
ON INTAKE PIPE

100 GALVANIZED STEEL  
FLANGE FOR HDPE PIPE

9mm STAINLESS STEEL WIRE  
ROPE PUMP PULL CABLE

9 GALVANIZED STEEL  
BLIND FLANGE

6 GALVANIZED STEEL  
WEAR PLATE

STUB END ON INTAKE  
CASING

1

KAMLOCK DUST CAP  
KAMLOCK MALE ADAPTER  
12 - M22 x 120 GALVANIZED  
STEEL BOLTS c/w NUTS  
SPOT WELD NUTS TO BACKING  
PLATE BEFORE GALVANIZING THE  
ENTIRE ASSEMBLY  
4 - M22 x 120 GALVANIZED  
STEEL BOLTS c/w NUTS  
24 GAUGE 302 SS PIPE CAP  
c/w UP OVER HDPE CASING PIPE  
SEALED WITH MASTIC

HDPE JACKET

62 URETHANE INSULATION

HDPE DR17 300 x 75 WYE CONNECTION

5

107 107

100 THICK BLACK RUBBER PLUG  
C/W HOLES DRILLED TO MATCH  
BACK PLATE AND CUT IN HALF  
TO MATCH BACK PLATE.

6

107 107

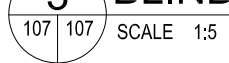
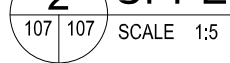

9 GALVANIZED BACKING PLATE

100 HDPE DR17 INTAKE PIPE  
FROM SUBMERSIBLE PUMP

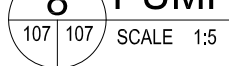
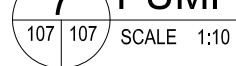
19mm COPPER TUBING  
FOR HEAT TRACE (2)

HDPE DR17 INTAKE  
CASING C/W STUB END FUSED  
TO CASING PIPE.  
STUB END TO BE DR17 SERIES.

1 UPPER TERMINATION DETAIL



107 107 SCALE 1:5



THIS RECORD DOCUMENT HAS BEEN PREPARED BASED IN PART UPON INFORMATION FURNISHED BY OTHERS. DILLON CONSULTING LTD. CANNOT ASSURE THE ACCURACY OF OTHERS' INFORMATION AND THUS IS NOT RESPONSIBLE FOR THE ACCURACY OF THIS RECORD DOCUMENT OR FOR ANY ERROR OR OMISSION THAT MAY HAVE BEEN INCORPORATED INTO IT AS A RESULT. THOSE RELYING ON THIS RECORD DOCUMENT ARE ADVISED TO OBTAIN INDEPENDENT VERIFICATION OF ITS ACCURACY BEFORE APPLYING IT FOR ANY PURPOSE.



<b>TALOYOAK WATER TREATMENT PLANT RECORD DRAWINGS</b> <b>TALOYOAK, NUNAVUT</b>		PROJECT NO. <b>07-8107-2000</b>
<b>PUMP CASING AND SCREEN DETAILS</b>		SHEET NO. <b>107</b>