

Ktech INDUSTRIAL PRODUCTS INC.

Model FS301E-2 Installation Instructions

Construction: Brass stem, buna-n float 1.88" dia. , 2" NPT bushing, explosion proof J-box.
Switch set-point distances are measured from the underside of the 2" NPT bushing to the centre of the float at the level where the switch is activated. Switch set-point distances are not field adjustable. They are factory-set as specified on the purchase order. The contact arrangement may be changed from normally open (NO) to normally closed (NC) and vice versa. Turn over the float and return the stop collars to their original positions. If the contact arrangement is altered, use an ohmmeter to test that the switch operates correctly. Screw the float switch into the 2" NPT opening on the top of the tank. The conductors are colour coded to identify each switch. The switch must be connected in series with a load.

DO NOT CONNECT THE SWITCH DIRECTLY ACROSS THE POWER SUPPLY.

The voltage / current product must not exceed the power rating.

Electrical Specifications

Maximum Switching Voltage VOLTS DC/AC	240
Maximum Switching Current AMPS DC/AC	1.0
Maximum Switching Power WATTS DC/AC	100
Max. Operating Temperature	90°C 194°F

Meets Standards:

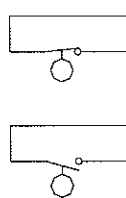
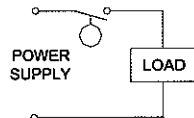
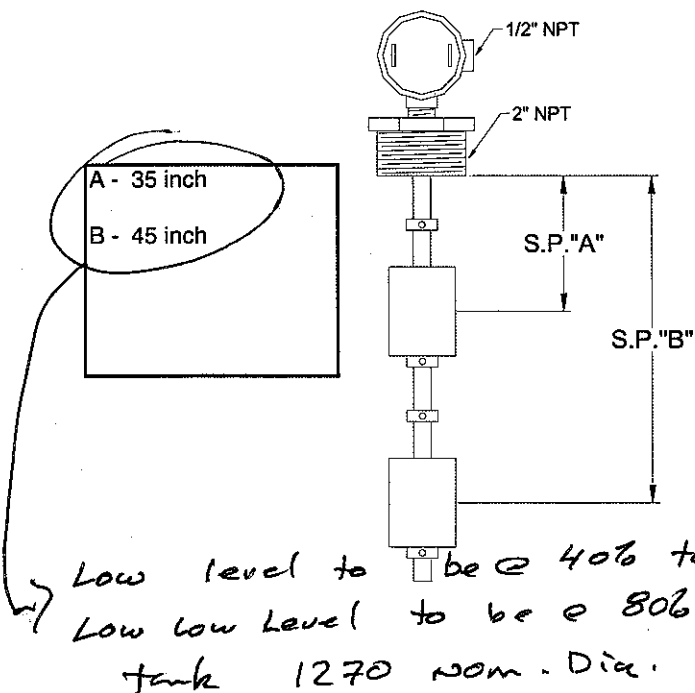
Class 1 Division 1, Groups B,C,D

CSA C22.2 No. 1010-1 and ANSI / I SA S82-03

CSA C22.2 No. 30 and UL1203



9700099



BLACK

"A"

BLACK

SHOP DRAWING REVIEW

THIS DRAWING HAS BEEN REVIEWED FOR GENERAL CONFORMANCE WITH THE DESIGN CONCEPT ONLY. SUCH REVIEW SHALL NOT RELIEVE THE CONTRACTOR OF HIS RESPONSIBILITY FOR ERRORS OR OMISSIONS OR OF MEETING THE REQUIREMENTS OF THE CONTRACT DOCUMENTS. NO RESPONSIBILITY IS ASSUMED FOR CORRECTNESS OF DIMENSIONS OR DETAILS

<input type="checkbox"/>	NO COMMENT
<input type="checkbox"/>	SEE COMMENTS
<input checked="" type="checkbox"/>	AMEND & RESUBMIT
<input type="checkbox"/>	REJECTED

Submission No. _____

Project No. 078107

By: AS

Date: June 11/10

DILLON CONSULTING LIMITED