

INSTALLATION INSTRUCTIONS

ELECTRONIC FAN TIMER R99G004

APPLICATION

The R99G004 Electronic Fan Timer integrates control of all burner and circulator fan operations in an oil furnace. This control is the central wiring point for most of the electrical components in the furnace. The basic purposes of the R99G004 are to monitor the thermostat for heat, cool and fan demands, run the oil burner primary control and up to a two-speed circulating fan, as required. The R99G004 also monitors a limit switch string, which energizes the circulating fan whenever the limit switch opens.

Electronic air cleaner and humidifier convenience terminal connections are provided as an option. A means for operating continuous indoor air circulation is also available.

SPECIFICATIONS

Electrical Ratings:

Power requirements:
Voltage: 18-30 Vac, 50/60Hz.
Current: 4VA at 24 Vac.

Contact Ratings:

Circulating Fan: 15A Full Load, 30A Locked Rotor at 115 Vac (includes optional EAC load).

"On" / "Off" Delay Settings:

Delay "On": 30, 60, 90, 120 seconds, field adjustable.
Delay "Off": 1, 2, 4, 6 minutes, field adjustable.

Environmental Ratings:

Temperature: -40 to +150° F [-40 to +66° C]
Humidity: 95% maximum, non-condensing.

INSTALLATION

When installing this product...

1. Read these instructions carefully.
2. Check the ratings and specifications given in the instructions and on the product to assure the product is suitable for your application.

3. Installer must be a trained and experienced service technician.
4. After installation is complete, check out the product operation as provided in these instructions.



WARNING

ELECTRICAL SHOCK HAZARD

Failure to follow this warning could result in personal injury or death.

Disconnect power supply before wiring, to prevent electrical shock or equipment damage.

Location and Mounting

The R99G004 is mounted in the appliance wiring compartment using four # 6 screws (obtained locally) through standoffs on the corners of the board.

Wiring

All wiring must comply with local codes and ordinances. Disconnect power before making wiring connections. Refer to Figure 1 for standard wiring connections.

Setting the Fan "On" Delay Switches

Set the heat fan "on" delay switches to either 30, 60, 90 or 120 seconds, as shown in Figure 2. The "on" delay time starts when the burner motor is energized at the beginning of a thermostat call for heat.

Setting the Fan "Off" Delay Switches

Set the heat fan "off" delay switches to either, 1, 2, 4 or 6 minutes, as shown in Figure 2. The "off" delay time starts when the burner motor is de-energized at the end of a thermostat call for heat.

CHECKOUT

Ensure the system operates properly by operating the system through at least one complete heating and cooling cycle, if applicable. Troubleshoot by checking for appropriate voltages at the R99G004 terminals controlling the burner motor and heat and cool speed circulating fan.

Figure 1

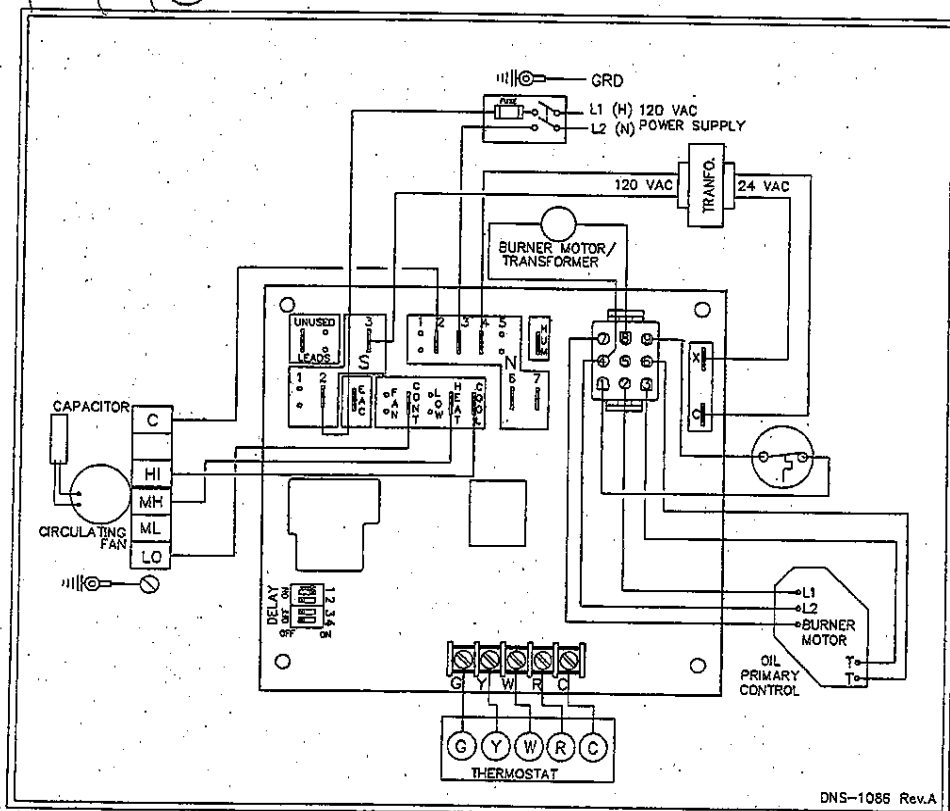
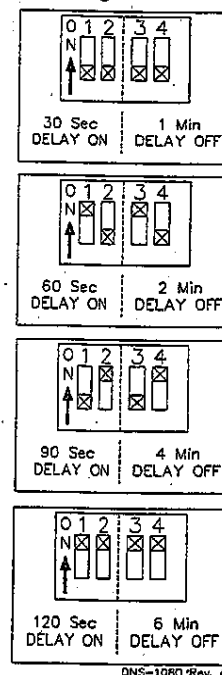


Figure 2



Blower "ON" and "OFF" delays are independent from each other. Alternative combinations are possible.