

Critical Equipment Reliable Supervision

ProTalk[®]
Plus

BE BARNETT ENGINEERING LTD.



EQUIPMENT FAILURE

REMOTE MONITORING/REMEDY



S I T E M O N I T O R I N G

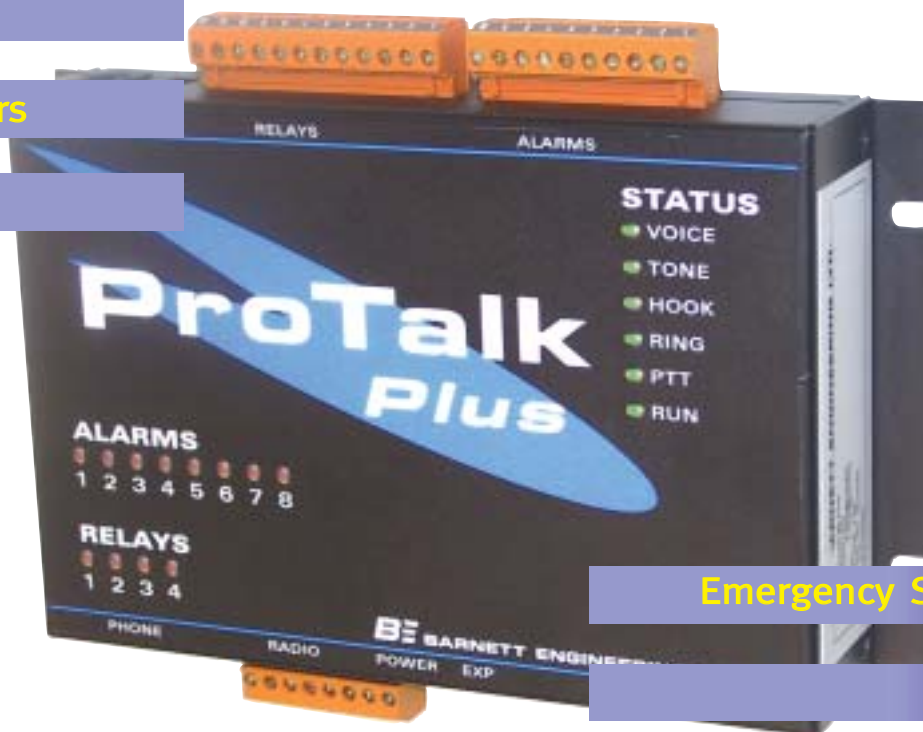
Security Devices

Lift Stations

Compressors

Chemical Analyzers

Float Switches



Emergency Shutdown

Pumps

Valves

Lights

Sirens

S I T E C O N T R O L



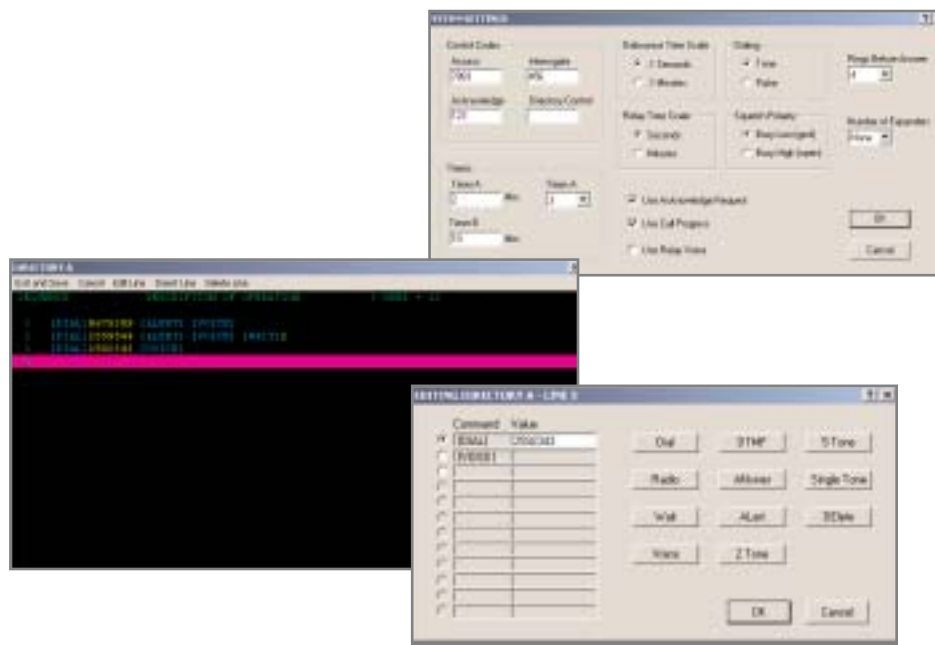
ProTalk®

Plus

REMOTE SITE VOICE ALARM REPORTING UNIT

Lost profits and environmental damage due to equipment failures can have catastrophic effects on your business. The new B1290 ProTalk Plus voice auto dialer helps to avoid costly downtime and disasters by providing your key personnel with early notification of trouble conditions with your critical equipment.

The ProTalk Plus is easy to install and is simple to program. By using any Touch-Tone telephone or the included software, the ProTalk Plus can be ready to alert you to emergency situations in minutes.



Critical Equipment Reliable Supervision

Features and Benefits

- Easy to read status indicators and removable terminal blocks allow for straightforward operation and fast installation.
- Extreme temperature rating of -40° C to +60° C makes the B1290 ideal for the most demanding industrial monitoring applications.
- As many as 4 callout directories can be used for maximum callout flexibility.
- Allows for unique site identification, plus full-length, user-recordable messages for each input and output so that all pertinent information can be conveyed.
- Alarms can be announced over any combination of radio, telephone, pager, or public address system ensuring that your personnel can be notified wherever they are.
- Relays can be automatically activated when inputs are energized for optimum control.
- Status of inputs and outputs can be interrogated remotely providing operators with important changes in system status.
- Supports expansion from the basic 8 digital alarm inputs and 4 relay outputs up to 64 digital inputs and 32 outputs allowing the ProTalk Plus to grow with your needs.
- The ProTalk Plus can be fully programmed locally and remotely by any Touch-Tone phone eliminating site visits.
- RS-232 serial port allows configuration and voices to be saved and transferred to other B1290s for rapid programming of multiple units.

Specifications

Alarm Inputs	• 8, optically isolated, 2mA to operate. Ground closure causes voice and signaling transmissions. Plug-in screw terminal blocks 4 independent form C outputs controlled by programmable DTMF codes; optionally configured for automatic activation upon receipt of inputs; voice announcement when operated; plug-in screw terminal block; 1 Amp at 30 V DC each
Control Outputs	
Telephone Connection	• RJ11; tone or pulse line
Programming Connection	• RJ11; accepts a standard telephone; receives tones and voice from telephone and speaks parameters back to the user; configurable via PC or RS-232; allows upload and download of configuration and voices
Radio Receive Audio	• -20 dBm to 0 dBm, 10 k ohm impedance; unbalanced, AC coupled.
Radio Transmit Audio	• -20 dBm to 0 dBm, 600 ohm impedance; unbalanced, AC coupled.
Channel Busy (COS)	• 10 k ohm impedance; ground closure to activate.
Push to Talk (PTT)	• Open collector driver, 25 V max, 150 mA max.
Acknowledge Input	• Ground closure to locally acknowledge alarm conditions.
Voice Quality	• Digitized, toll quality, 32 kbps, ADPCM
Local Status Indicators	• Internal speaker with adjustable volume control; individual alarm and relay LED's.
Power	• + 11.5 VDC to + 28 VDC, 100 mA standby current, plus 10mA per relay.
Environment	• -40 C to + 60 C, 95% relative humidity, non-condensing.
Physical	• 6.5"x8.5"x2"

Programmable Features

Alarm Voice Messages	• Unique site identification plus individual messages for each alarm input.
Alarm Format	• Selects N.O. or N.C. latched or unlatched inputs as alarm conditions.
Alarm Debounce	• Selects the delay time before a change at an input is recognized; range from 0.1 to 19.9 and programmable in minutes or seconds.
Radio Squelch Polarity	• Selects high or low going COS.
Interval Timer	• 2 stage timer that uses 'A' interval 'A' times before switching to the 'B' interval; 'A' is adjustable between 1 and 249 minutes and 'B' is adjustable between 0 and 249 minutes allowing it to auto acknowledge.
Call Progress On/Off	• Detects dial tone before dialing and voice answer before playing messages.
Rings Before Answer	• 1 to 8 or never answer.
Telephone Access Code	• Password for dialup users; 1 to 8 DTMF digits.
Acknowledge Code	• Stops the transmission cycle; 1 to 8 DTMF digits.
Interrogate Code	• Speaks all alarms and relays; 1 to 8 DTMF digits.
Directory Control Code	• Changes the directory that the alarms use for their callout; 1 to 8 DTMF digits
Alarm On/Off Codes	• Sent when an alarm is active (on) or reset (off); separate alarm on/off codes for each alarm; 1 to 8 DTMF digits each.
Remote Alarm Input Codes	• When received, simulate an alarm activation. Separate for each alarm; 1 to 8 DTMF digits each.
Ack Voice Disable	• Does not request an ack code after the alarms have been announced. Most useful in paging or P.A. systems.
Number of Expanders	• Selectable from 0 (8 inputs, 4 outputs) to 7 (64 inputs, 32 outputs).

Callout Capabilities

Alarm Reporting Sequence	• Radio or telephone reporting is configurable to occur anywhere in the callout sequence
Directory Format	• 4 selectable directories (A – D) hold alarm reporting sequences; Inputs can be individually assigned to each directory.
Telephone Numbers	• Up to 16 callout numbers in each of the 4 directories; each directory can hold up to 200 digits.
Signaling	• Singletone, DTMF, 2 tone paging, 5 tone paging, alert, or voice.

Relays

Relay Voice Messages	• Individual voice messages for each relay.
Relay ON/OFF Input Codes	• Received codes turn relays on or off 1 to 8 DTMF digits each.
Automatic Relay Settings	• Relay 1=New alarm; Relay 2=Any Alarm; Relay 3=Acknowledge Received; Relay 4=Error
Relay ON Times	• Continuous or timed; timed intervals range from 1 to 199 and are programmable in minutes or seconds.

Options

- B1256 – AC Adapter
- Option 004 – External power pack c/w 120 VAC power supply, sealed battery and charger, 12 hour backup capacity in standby.
- B1290E - Expander units adding 8 inputs and 4 relay outputs each (maximum of 7 expanders).