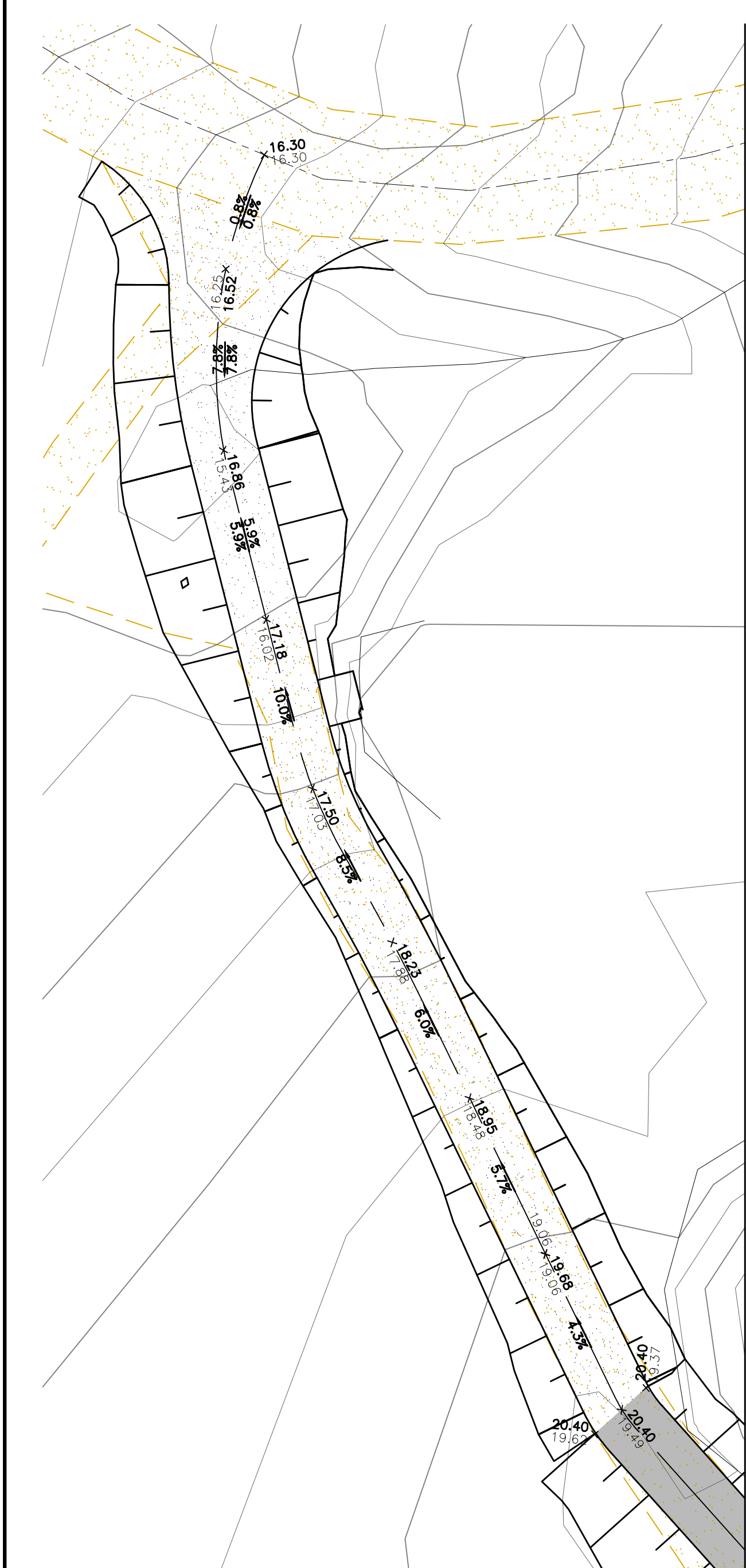
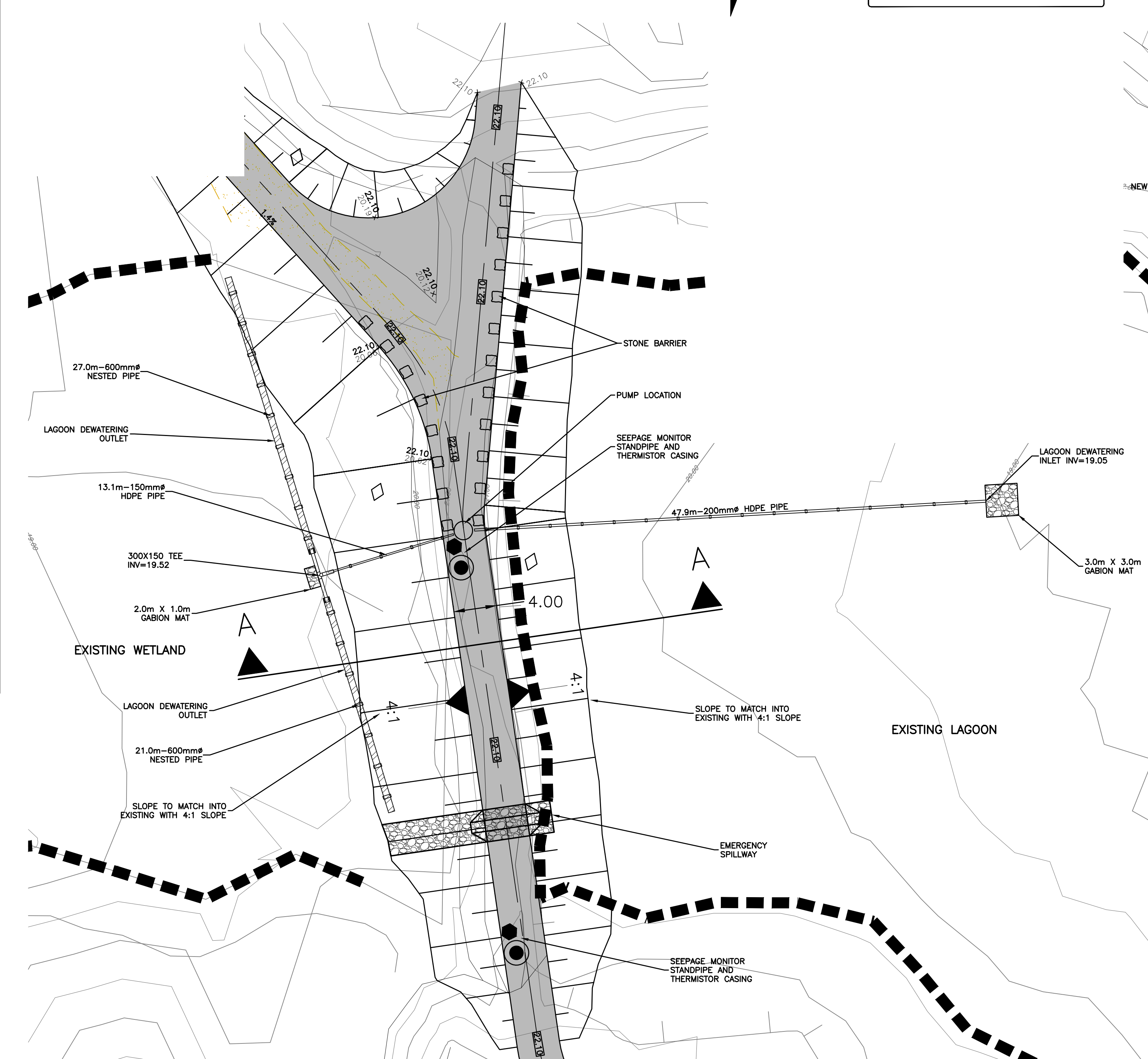


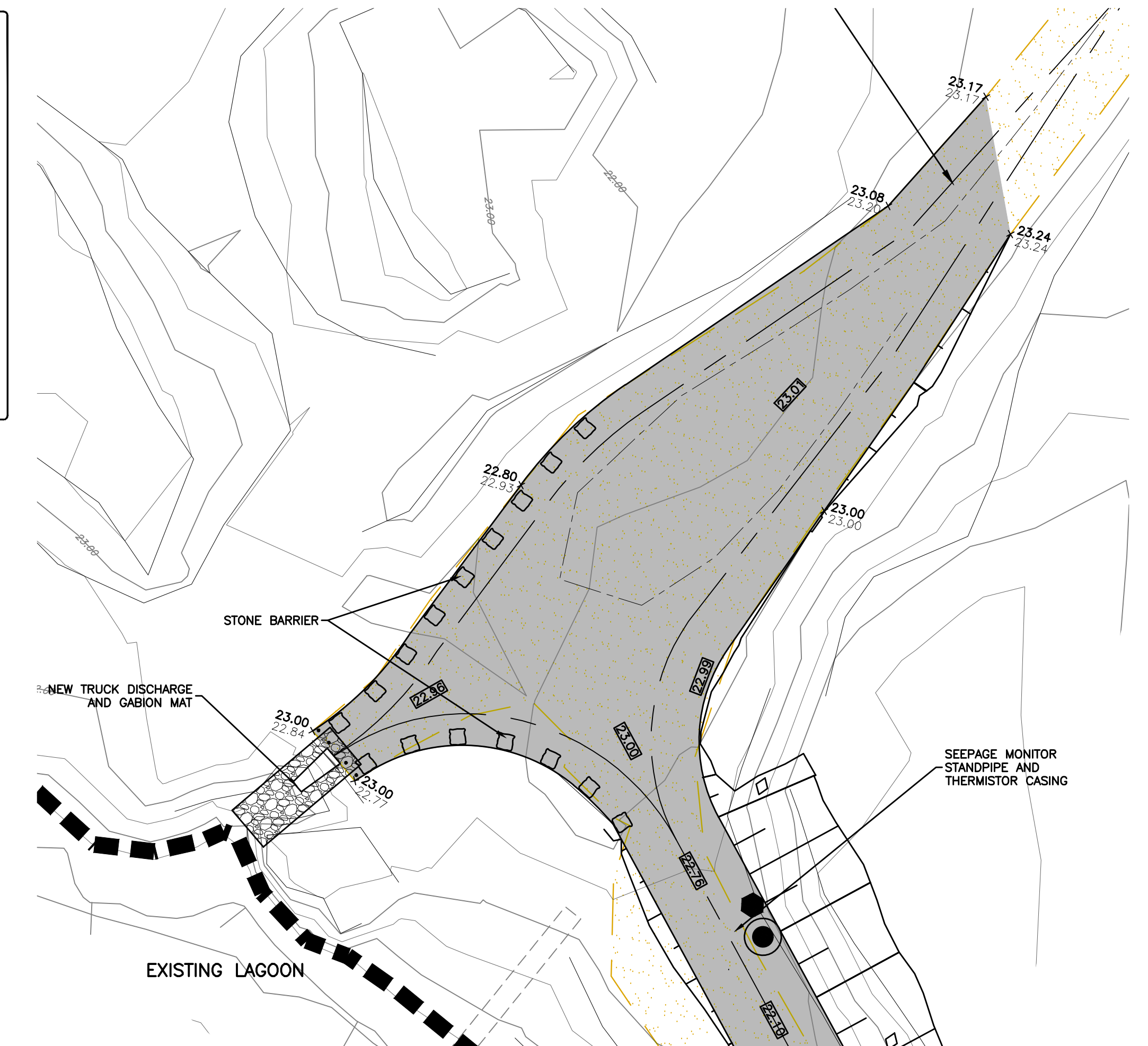
Filepath: \\nas001\projects\civil\engineering\services\201006-0201369-40 - sewage lagoon wetland upgrades - whale cove - gwh\mfg\02-01\161416.dwg
Last Saved: 2/2/2012 2:22:52 PM
Plotted by: butler
References: Whale Cove TQPS.dwg, 201106-010501-01.dwg



SOUTHWEST ACCESS ROAD
1:250



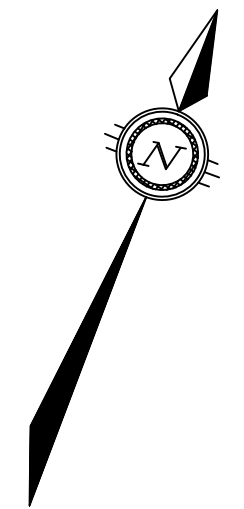
SOUTHWEST BERM TO ACCESS ROAD
1:250



NORTHEAST TRUCK DISCHARGE AND ACCESS ROAD
1:250

LEGEND

- EXISTING GRAVEL ACCESS ROAD
- PROPOSED GRAVEL ACCESS ROAD
- PROPOSED 100mm GRANULAR 'A'
- SEEPAGE MONITORING STANDPIPE
- THERMISTOR CASING
- PUMP LOCATION
- STONE BARRIER
- TRUCK DISCHARGE
- GABION MAT
- BOLLARDS
- HDPE PIPE
- NESTABLE PIPE



NOTES

THE POSITION OF ALL POLE LINES, CONDUITS, WATERMAINS, SEWERS AND OTHER UNDERGROUND AND OVERGROUND UTILITIES AND STRUCTURES IS NOT NECESSARILY SHOWN ON THE CONTRACT DRAWINGS, AND WHERE SHOWN, THE ACCURACY OF THE POSITION OF SUCH UTILITIES AND STRUCTURES IS NOT GUARANTEED. BEFORE STARTING WORK, DETERMINE THE EXACT LOCATION OF ALL SUCH UTILITIES AND STRUCTURES AND ASSUME ALL LIABILITY FOR DAMAGE TO THEM.

PRELIMINARY
NOT FOR CONSTRUCTION

NO.	REVISION DESCRIPTION	DATE	BY	APPD	NO.	REVISION DESCRIPTION	DATE	BY	APPD
1	ISSUED FOR REVIEW	24/02/12	SAB	SLB					

SCALE

HORZ 1:250

0 2m 4m 10m

DESIGNED BY

REVIEWED BY

CLIENT

GOVERNMENT OF NUNAVUT
DEPARTMENT OF COMMUNITY
AND GOVERNMENT SERVICES

exp. Services Inc.
1-877-888-1889 (T) 1-877-225-7330
3650 Superway Drive, Unit 100
Ottawa, ON K2B 8P8
Canada
www.exp.com

• BUILDINGS • EARTH & ENVIRONMENT • ENERGY •
• INDUSTRIAL • INFRASTRUCTURE • SUSTAINABILITY •

BASE PLAN	S.BUTLER
DESIGN	S.DOUGLAS
CHECKED	S.DOUGLAS
CAD	S.BUTLER
PROJ. MAN.	S.BURDEN
APPROVED	

PROJECT

SEWAGE LAGOON
WHALE COVE, NUNAVUT

TITLE

TRUCK DISCHARGE
SITE PLANS

PROJ. NO. OTT-00201369A
SURVEY exp.
DATE FEB 01, 2012
DRAWING NO. WC-5