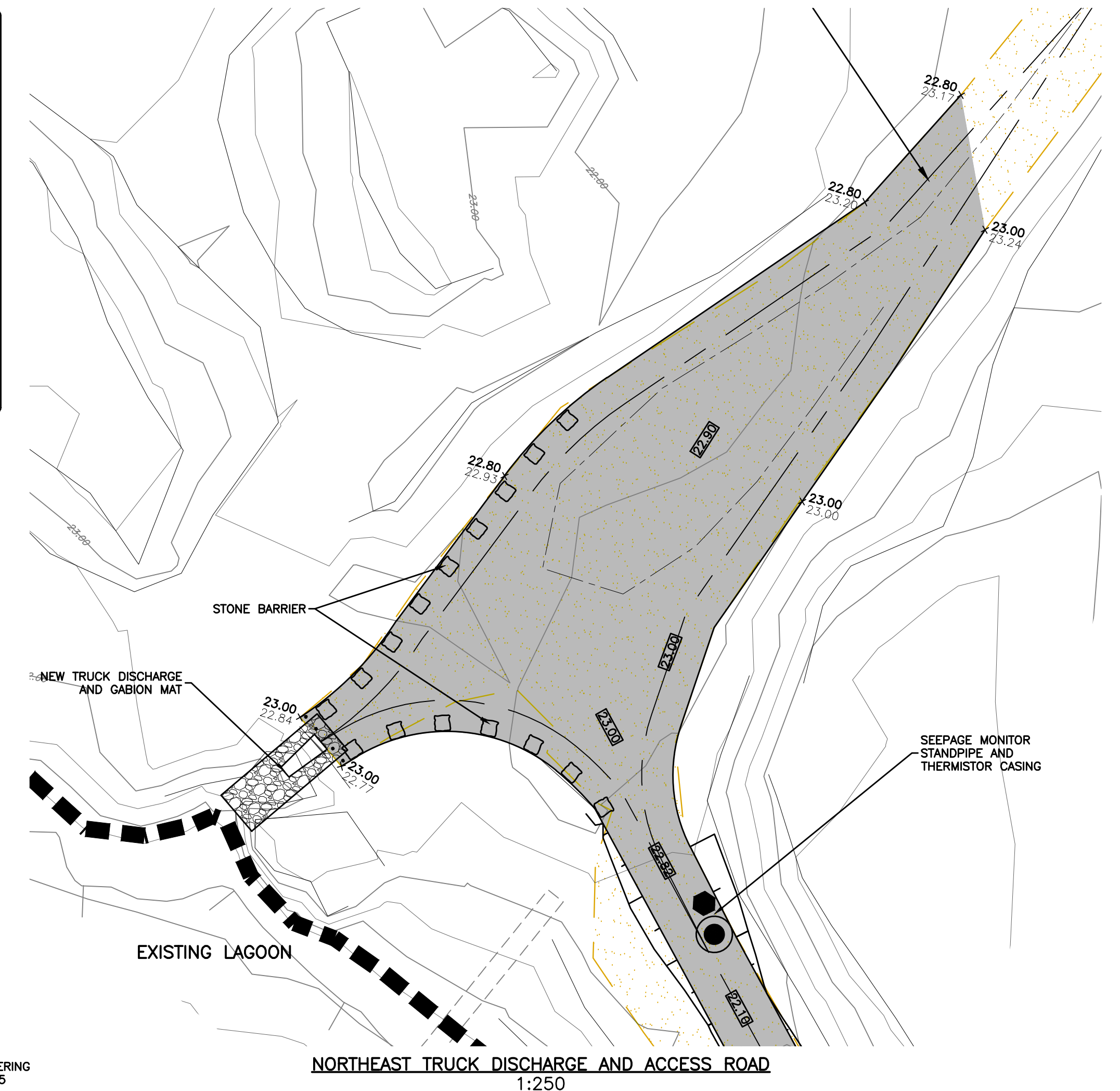
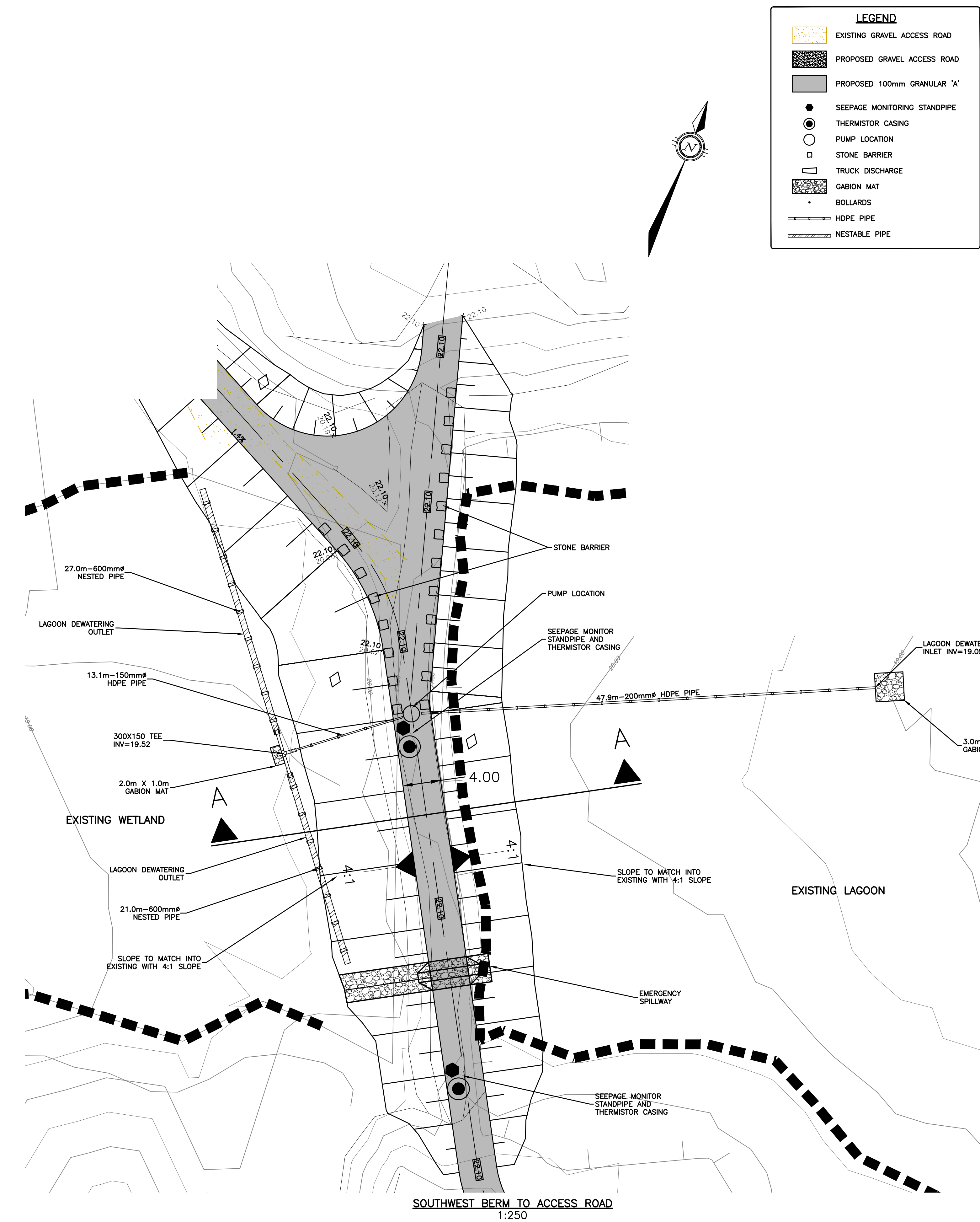
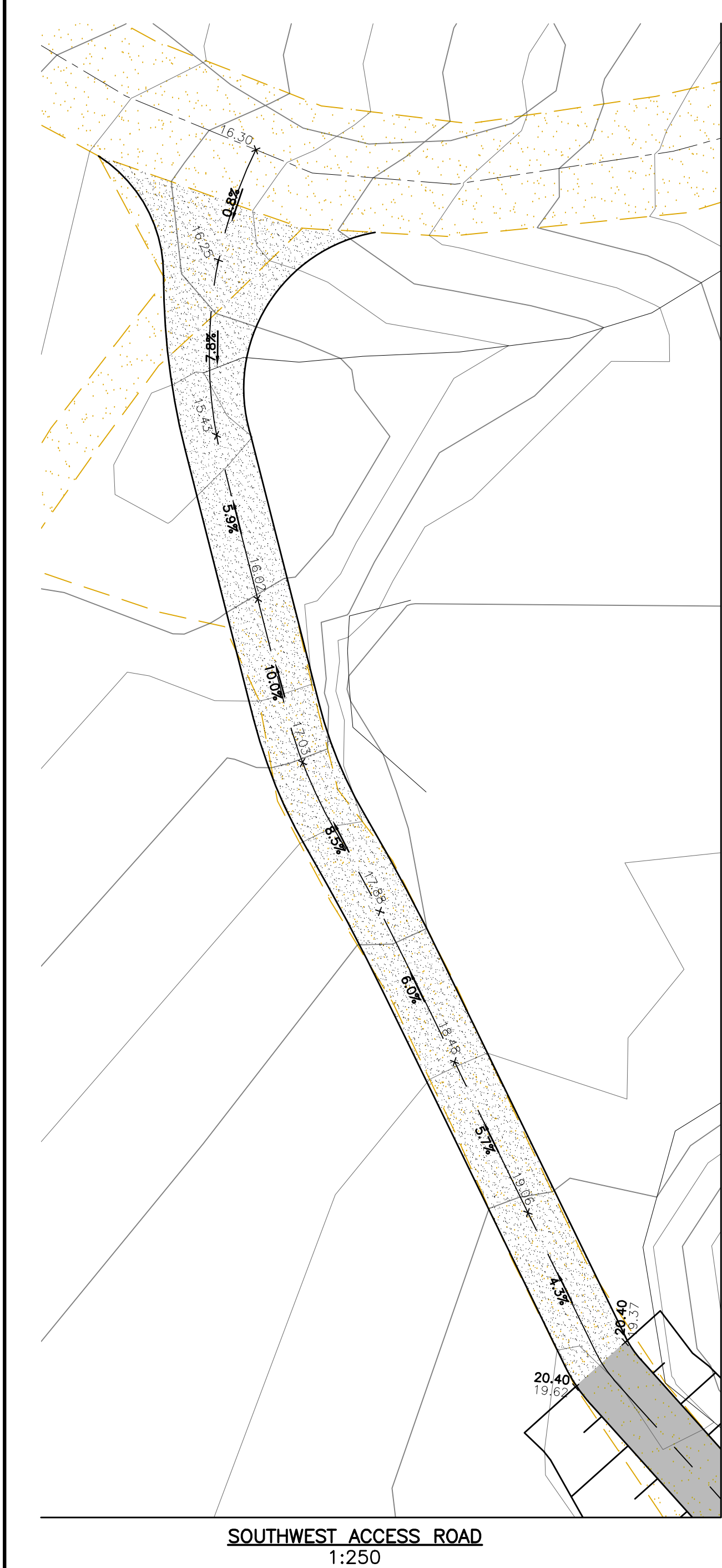


Filepath: \\nas001\projects\civil\engineering\services\201006-0201369-40 - sewage lagoon wetland upgrade - whale cove - gwh\manga02-01\161416p.dwg  
Last Printed: 24/02/12 2:23:13 PM  
Printed by: butler  
References: \\nas001\projects\civil\engineering\services\201006-0201369-40 - sewage lagoon wetland upgrade - whale cove - gwh\manga02-01\161416p.dwg



#### NOTES

THE POSITION OF ALL POLE LINES, CONDUITS, WATERMAINS, SEWERS AND OTHER UNDERGROUND AND OVERGROUND UTILITIES AND STRUCTURES IS NOT NECESSARILY SHOWN ON THE CONTRACT DRAWINGS, AND WHERE SHOWN, THE ACCURACY OF THE POSITION OF SUCH UTILITIES AND STRUCTURES IS NOT GUARANTEED. BEFORE STARTING WORK, DETERMINE THE EXACT LOCATION OF ALL SUCH UTILITIES AND STRUCTURES AND ASSUME ALL LIABILITY FOR DAMAGE TO THEM.


**PRELIMINARY**  
NOT FOR CONSTRUCTION

NO.	REVISION DESCRIPTION	DATE	BY	APPD	NO.	REVISION DESCRIPTION	DATE	BY	APPD
1	ISSUED FOR REVIEW	24/02/12	SAB	SLB					


SCALE
HORZ 1:250
0 2m 4m 10m

DESIGNED BY

REVIEWED BY

CLIENT
GOVERNMENT OF NUNAVUT DEPARTMENT OF COMMUNITY AND GOVERNMENT SERVICES
 The new identity of Trust / DME

BASEPLAN
S.BUTLER
DESIGN
S.DOUGLAS
CHECKED
S.DOUGLAS
CAD
S.BUTLER
PROJ. MAN.
S.BURDEN
APPROVED

PROJECT
SEWAGE LAGOON WHALE COVE, NUNAVUT
TITLE
TRUCK DISCHARGE SITE PLANS
PROJ. NO.
OTT-00201369A
SURVEY

DATE
FEB 01, 2012
DRAWING NO.
WC-5