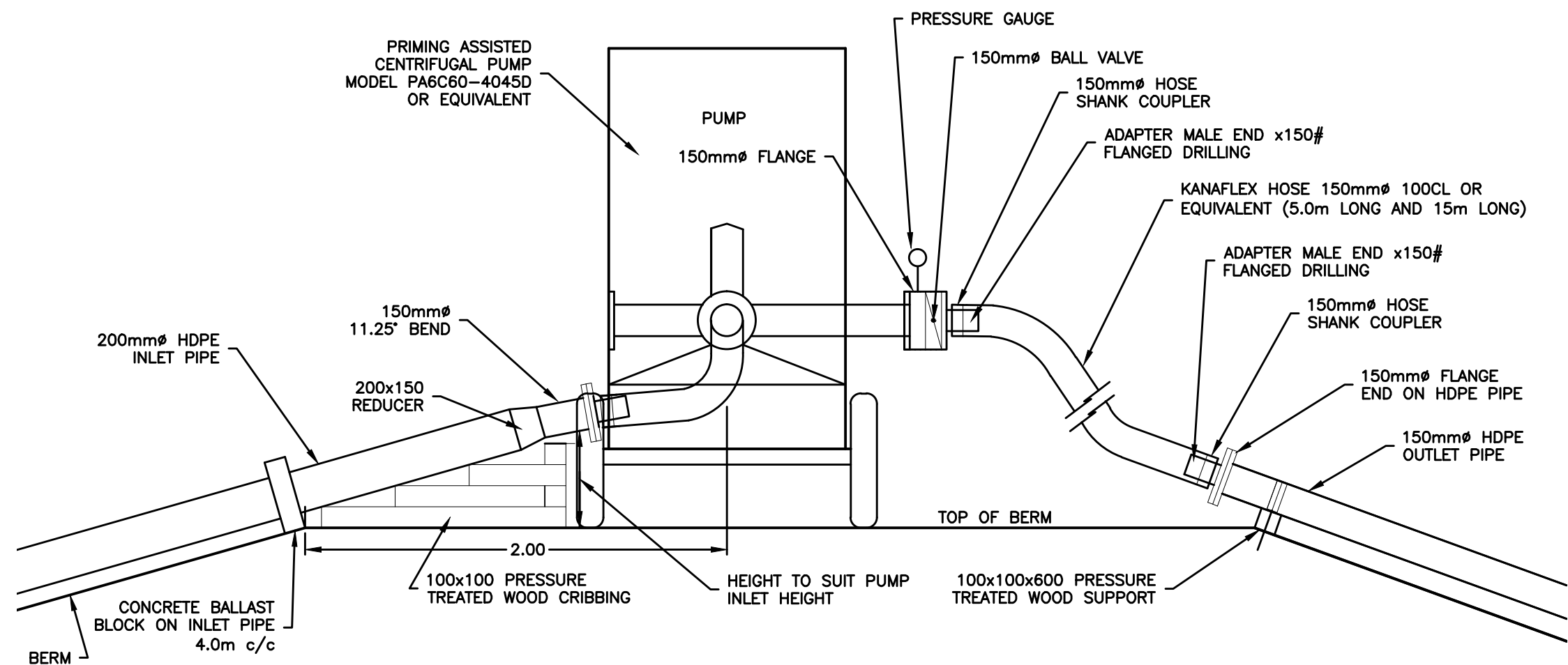
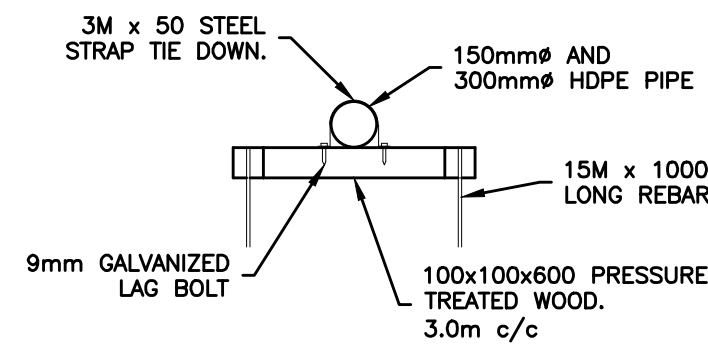
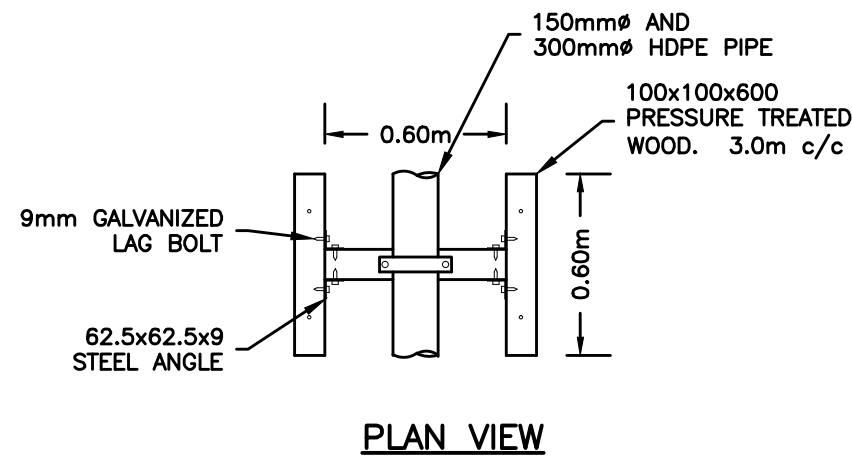


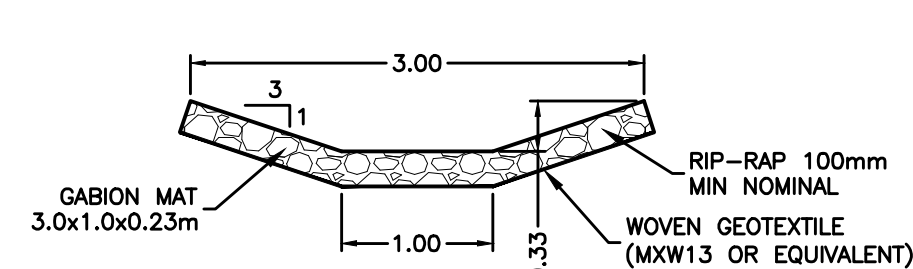
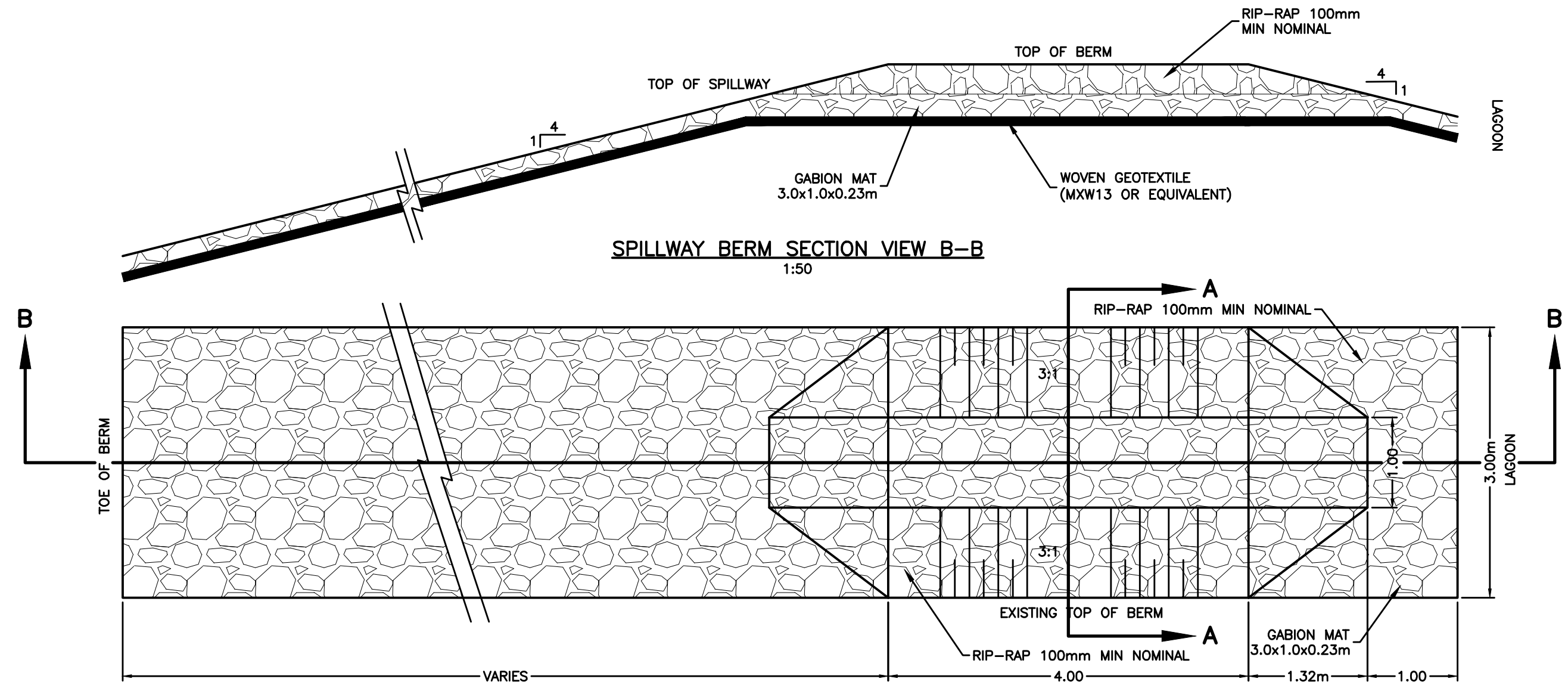
LAGOON DEWATERING PUMP INFRASTRUCTURE PLAN VIEW
1:25



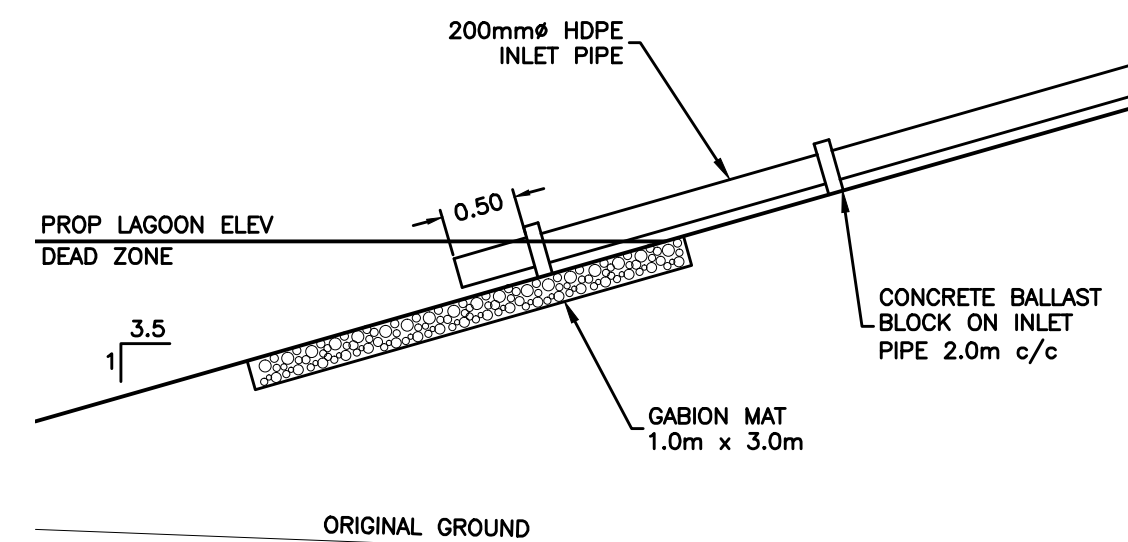
LAGOON DEWATERING PUMP INFRASTRUCTURE
1:25



OUTLET PIPE SUPPORT
1:25



SPILLWAY DETAIL SECTION VIEW A-A
1:50

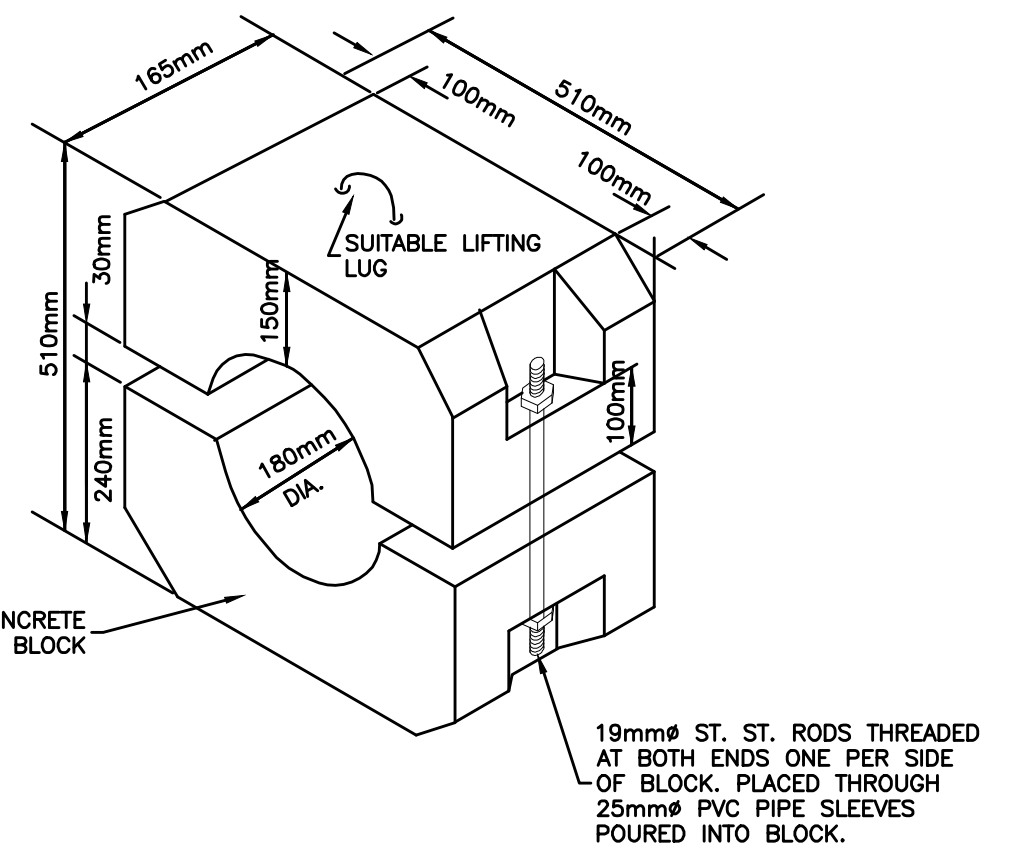


LAGOON DEWATERING INLET
1:50

NOTES:

- CONTRACTOR TO SUBMIT SHOP DRAWINGS FOR CONCRETE BALLAST BLOCKS C/W REINFORCING.
- CONTRACTOR TO USE 6.25mm THICK NEOPRENE SPONGE PADDING BETWEEN PIPE AND BLOCKS TO PREVENT CONTACT. WIDTH TO BE 180mm.

CONCRETE BALLAST BLOCK
N.T.S



NOTES

THE POSITION OF ALL POLE LINES, CONDUITS, WATERMAINS, SEWERS AND OTHER UNDERGROUND AND OVERGROUND UTILITIES AND STRUCTURES IS NOT NECESSARILY SHOWN ON THE CONTRACT DRAWINGS, AND WHERE SHOWN, THE ACCURACY OF THE POSITION OF SUCH UTILITIES AND STRUCTURES IS NOT GUARANTEED. BEFORE STARTING WORK, DETERMINE THE EXACT LOCATION OF ALL SUCH UTILITIES AND STRUCTURES AND ASSUME ALL LIABILITY FOR DAMAGE TO THEM.

PRELIMINARY
NOT FOR CONSTRUCTION

NO.	REVISION DESCRIPTION	DATE	BY	APPD	NO.	REVISION DESCRIPTION	DATE	BY	APPD
1	ISSUED FOR REVIEW	24/02/12	SAB	SLB					

SCALE

DESIGNED BY

REVIEWED BY

CLIENT

GOVERNMENT OF NUNAVUT
DEPARTMENT OF COMMUNITY
AND GOVERNMENT SERVICES



exp Services Inc.
1-877-888-1889 (T) 1-877-225-7337
2400 Supermarket Centre, Suite 100
Ottawa, ON K2B 8P8
Canada
www.exp.com
• BUILDINGS • EARTH & ENVIRONMENT • ENERGY •
• INDUSTRIAL • INFRASTRUCTURE • SUSTAINABILITY •

BASE PLAN	S.BUTLER
DESIGN	S.DOUGLAS
CHECKED	S.DOUGLAS
CAD	S.BUTLER
PROJ. MAN	S.BURDEN
APPROVED	

PROJECT
**SEWAGE LAGOON
WHALE COVE, NUNAVUT**
TITLE
**DETAIL PLAN
TRUCK DISCHARGE**

PROJ. NO.
OTT-00201369A

SURVEY
exp.

DATE
FEB 2012

DRAWING NO.
WC-6