



NWB Tools

Richard Dwyer <richard.dwyer@nwb-oen.ca>

Fuel berm update: Arctic Watch Lodge water licence 7BL-AWL2333

1 message

Nansen Weber <nansen@arcticwatch.ca>

To: Richard Dwyer <richard.dwyer@nwb-oen.ca>, Licensing@nwb-oen.ca

Dear Water Board Members,

As promised in the communications this past month, we have moved the lodge fuel berm to its new location, above the 31 meter mark.

Coordinates:

74.07292 degrees north
93.82652 degrees west

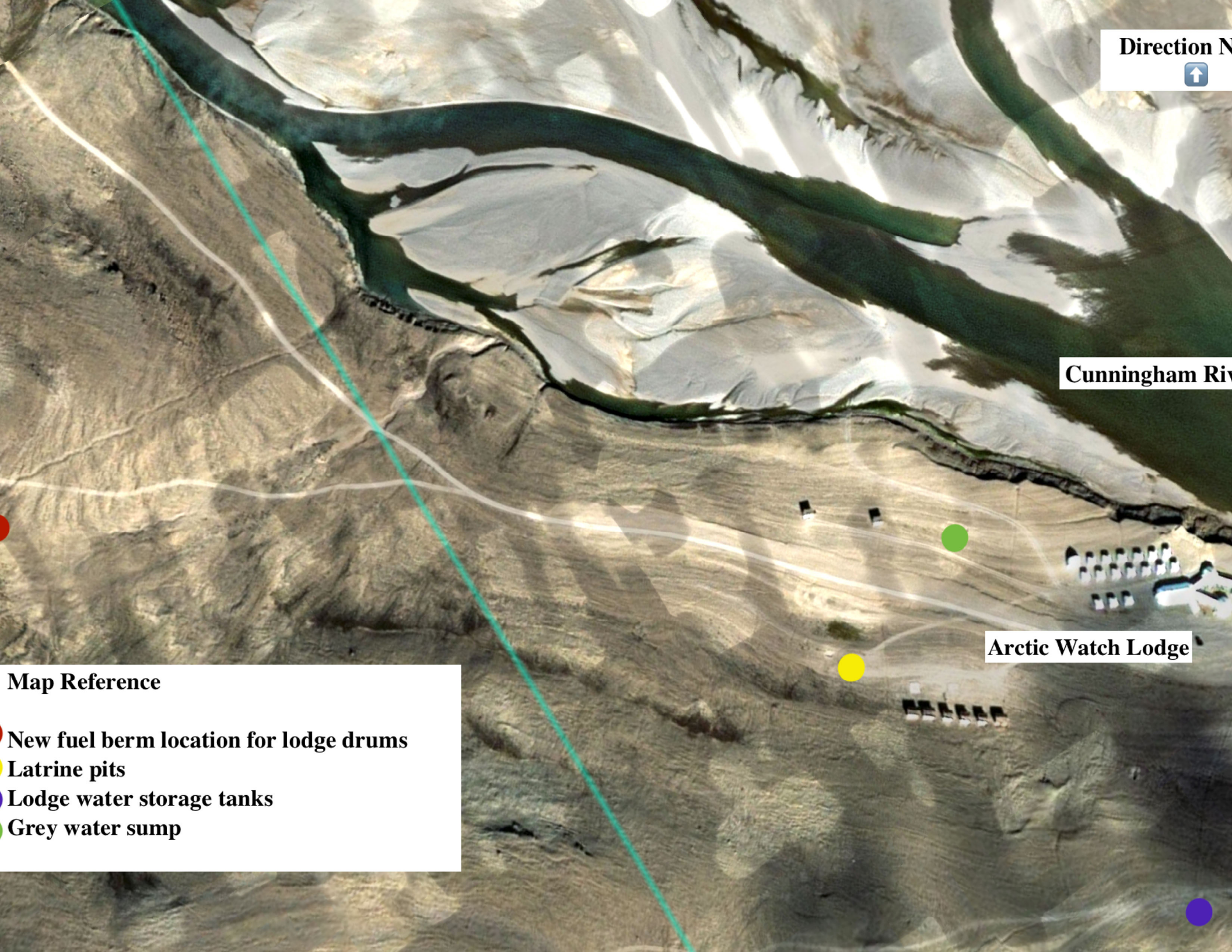
Fuel berm measurements 8 feet wide x 18 feet long x 4.5" deep

We can make necessary adjustments when the inspectors come in July.

Thank you,

Nansen





Direction N



Cunningham River

Arctic Watch Lodge

Map Reference

- New fuel berm location for lodge drums
- Latrine pits
- Lodge water storage tanks
- Grey water sump