

## APPENDIX A



PHOTO A - FRESH WATER INTAKE AT STATION CREEK BRIDGE

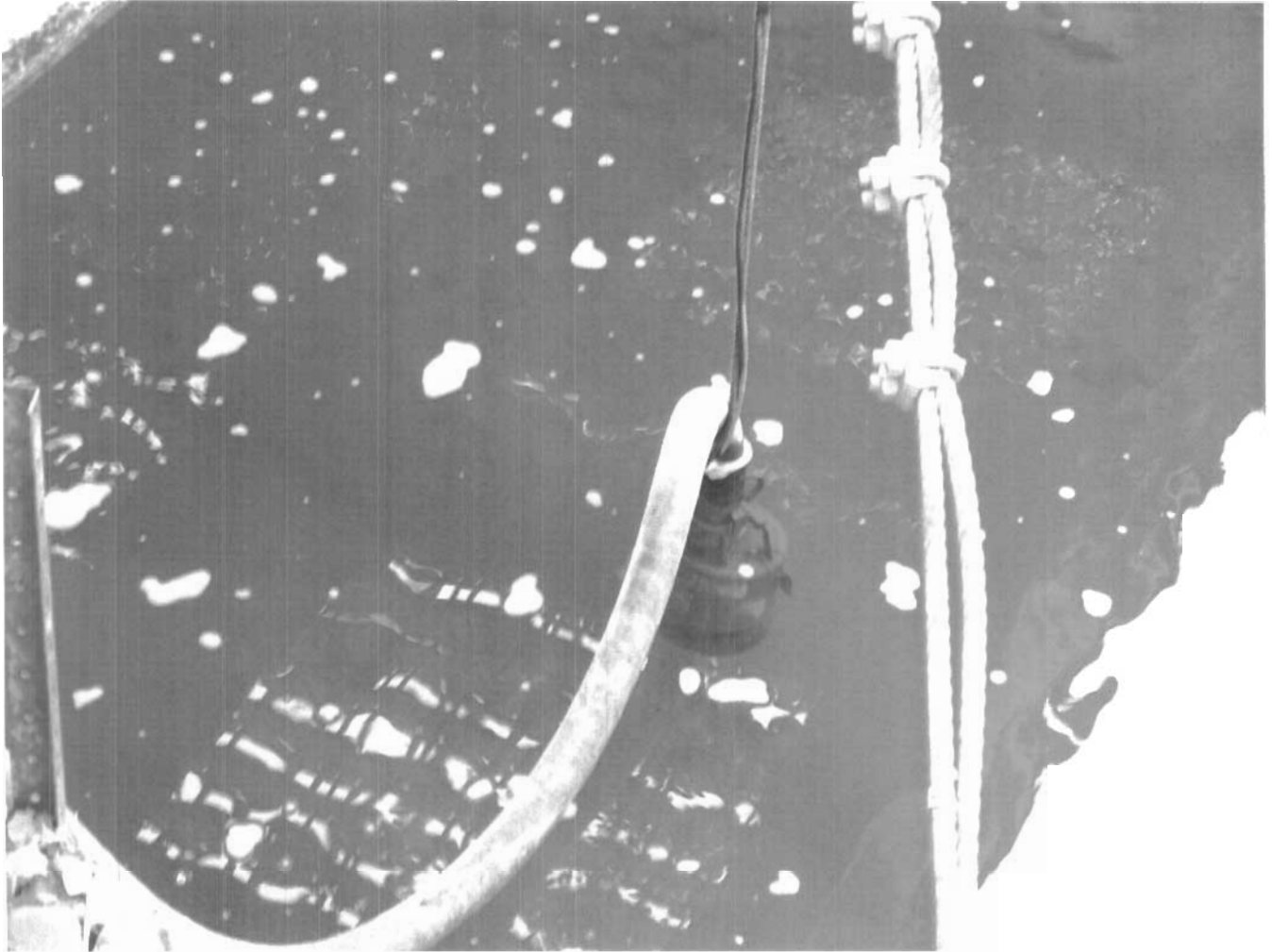


PHOTO B - FRESH WATER INTAKE AT STATION CREEK BRIDGE



PHOTO C - FRESH WATER INTAKE DISCHARGE AT RESERVOIR AND LIFT STATION.

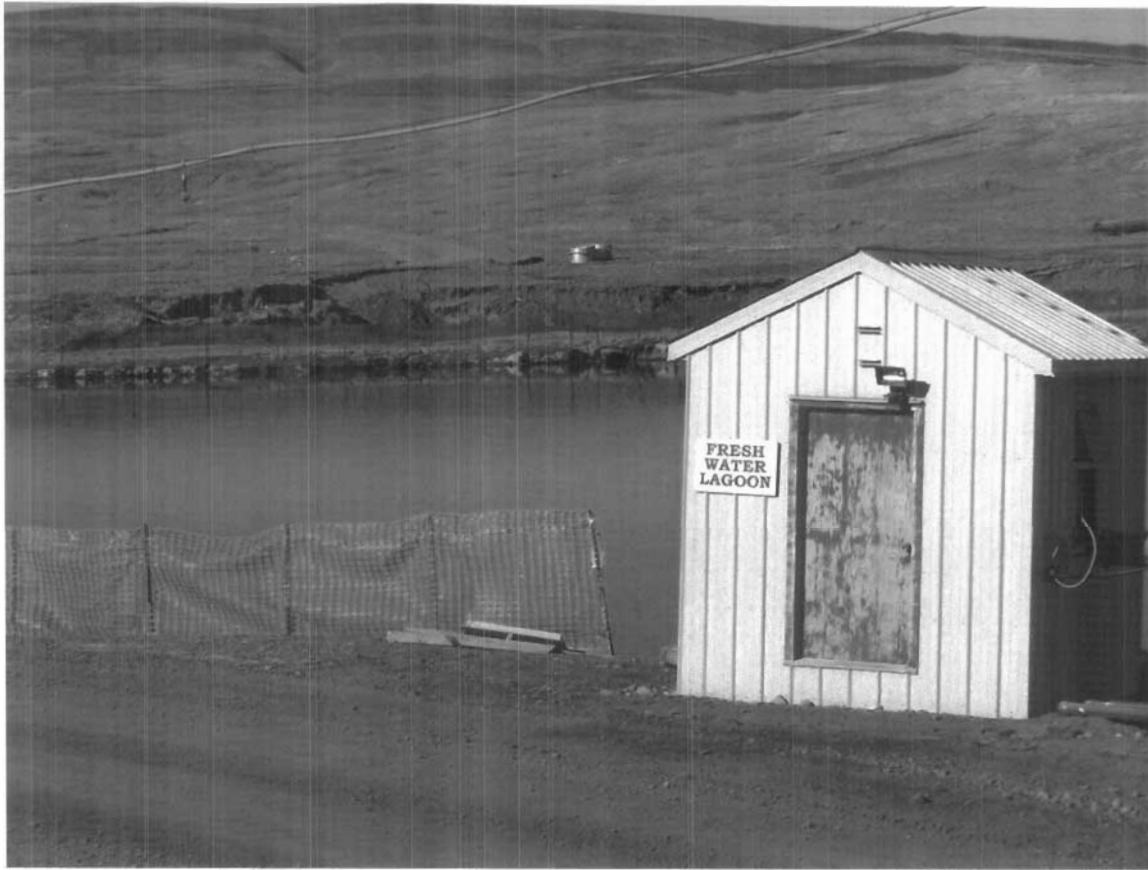


PHOTO D - FRESH WATER RESERVOIR AND LIFT STATION PUMPHOUSE.



PHOTO E - SEWAGE LAGOON AND PUMPHOUSE, LAGOON BERM AND SLIDRE FIORD.



Photo F

Circled area indicates location of bridge over Station creek where water is removed for filling of fresh water reservoir.

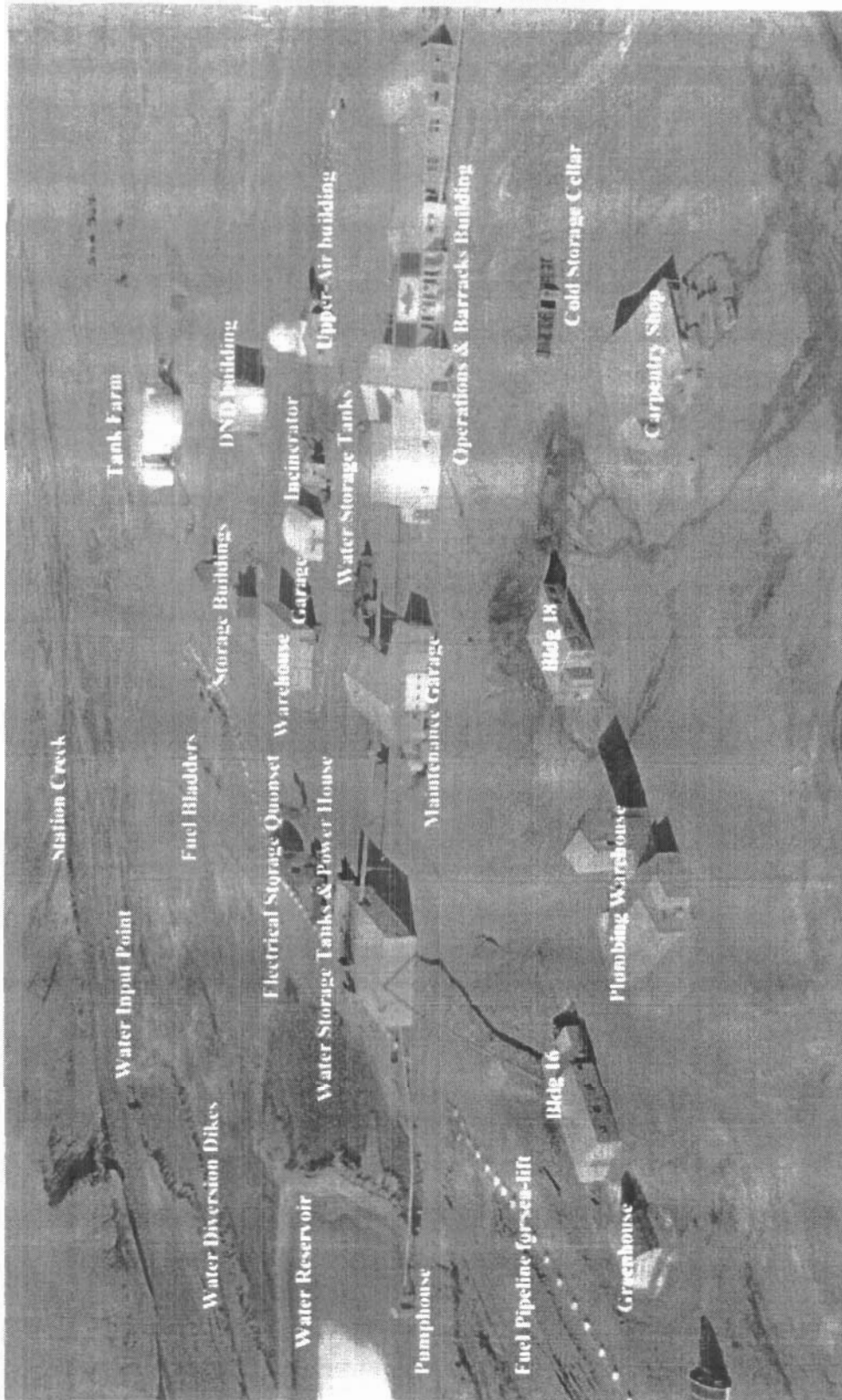


Photo 1





Photo 3

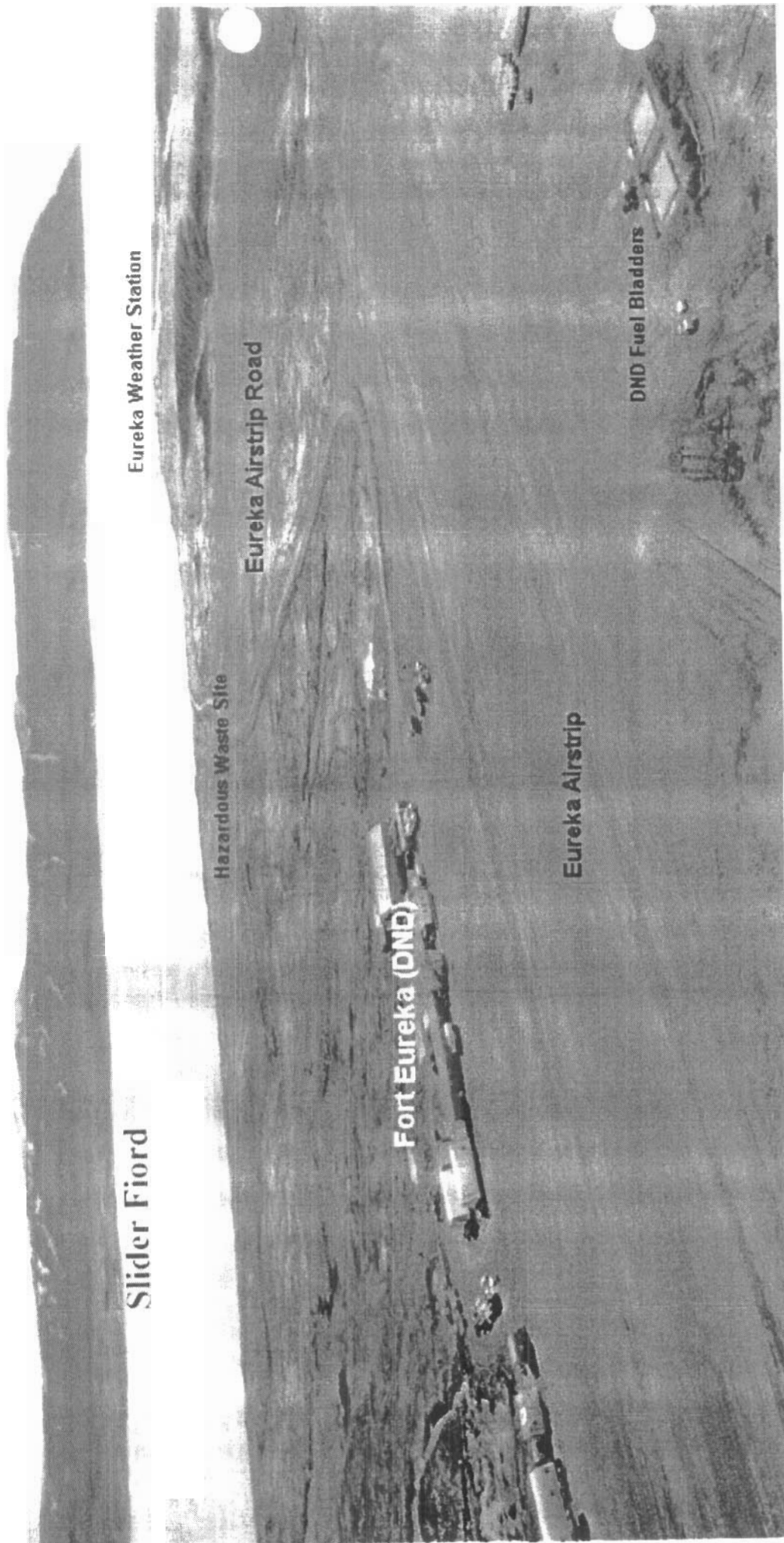


Photo 5

Hazardous Waste Site at Eureka

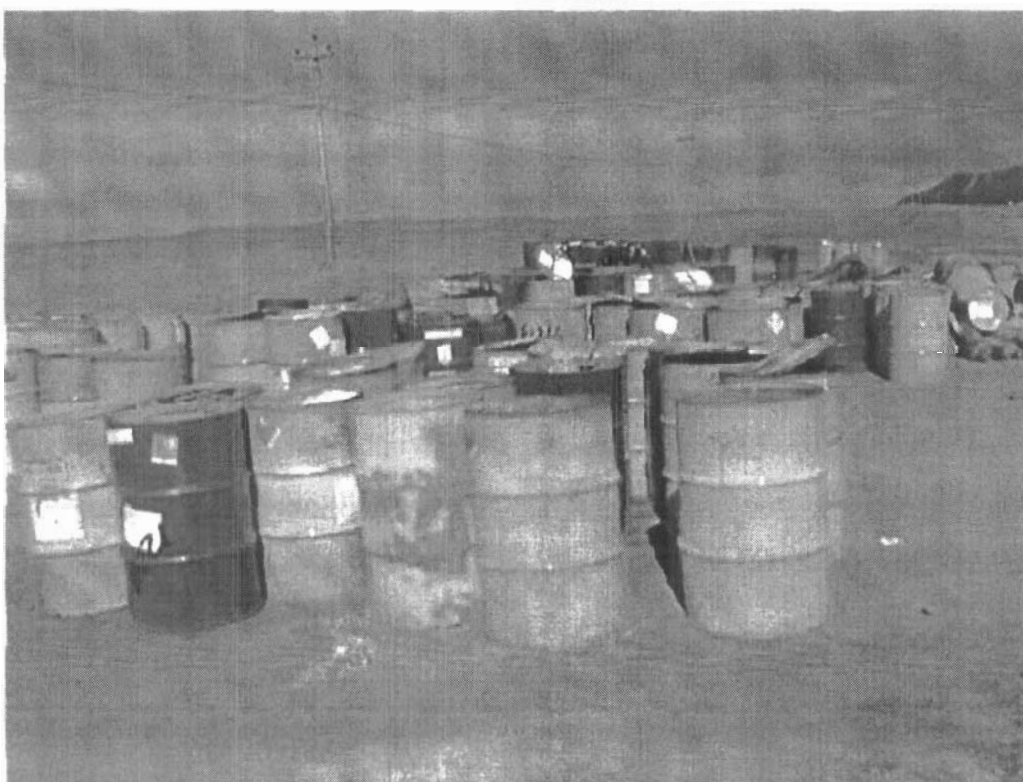
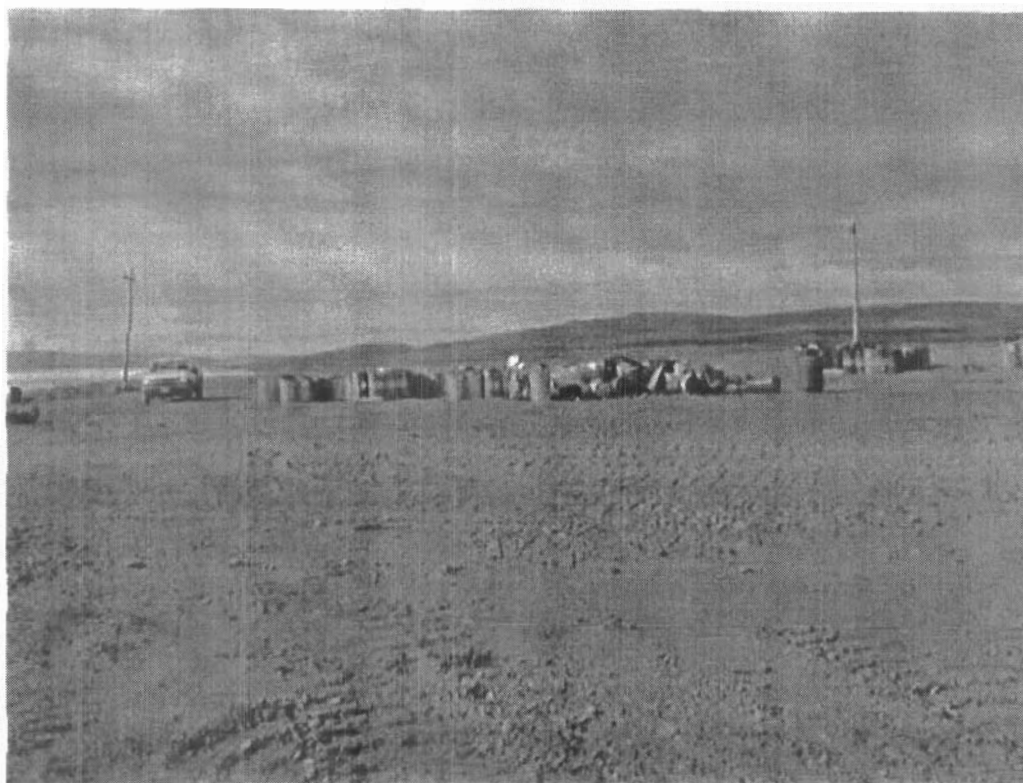


Photo 6

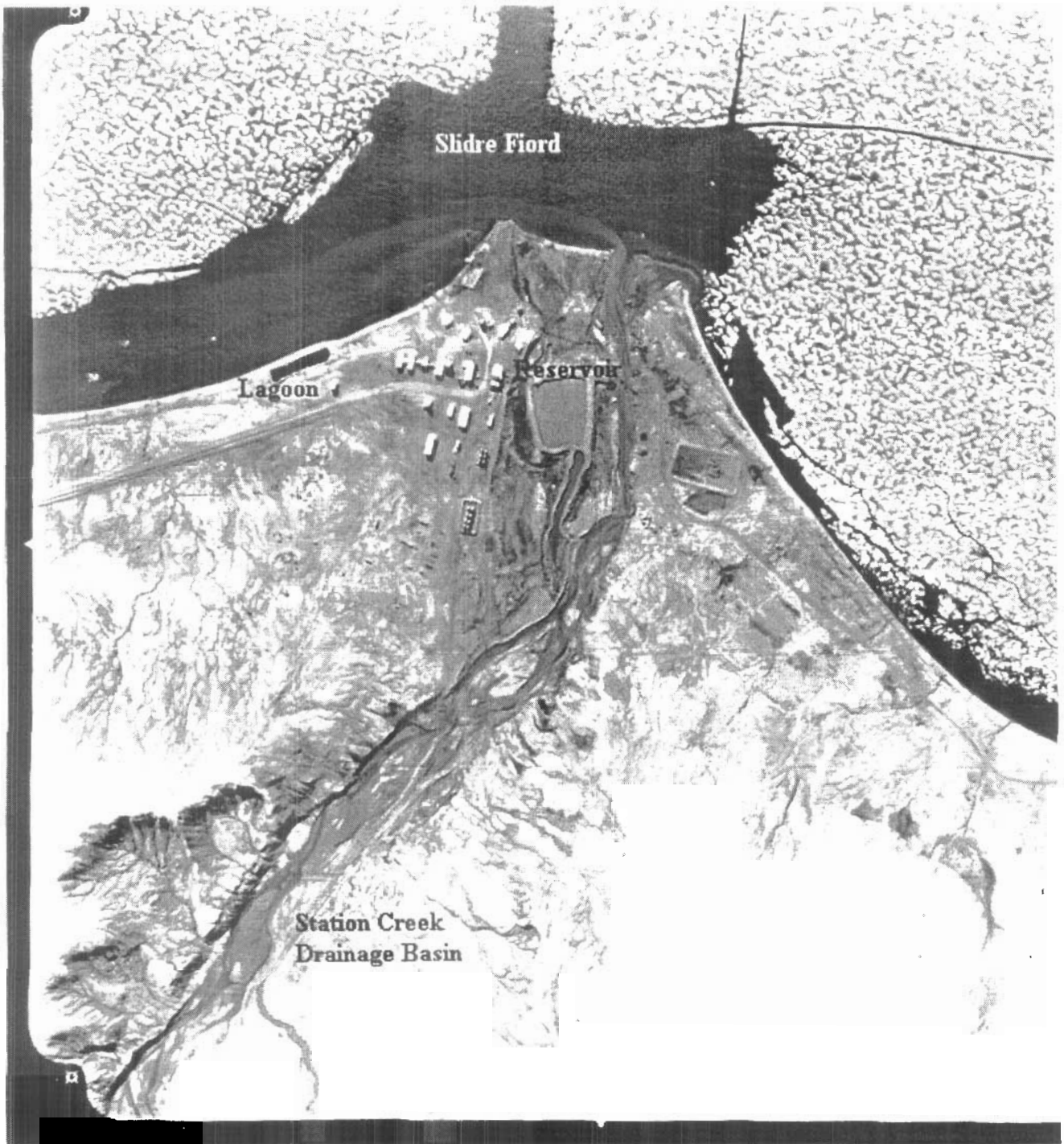


Photo# 7 : Exposed Debris at Abandoned West Runway Landfill



Photo# 8 : Exposed Debris at Abandoned West Runway Landfill





MINISTÈRE DU GÉNIÉ DU CHEMIN DU CANADA, MINISTÈRE DE L'ÉNERGIE, DES MINES ET DES RESSOURCES

Photo 9