



## **ANNUAL REPORT 2007**

**Submitted to:**

**Nunavut Water Board**

**For**

**Licence: NWB6FOH0409 - Type "B"**  
**FOX-MAIN, Hall Beach, NU**

**Submitted by: Nasittuq Corporation**

**31 March 2008**



This annual report is submitted to the Nunavut Water Board (NWB) as stipulated in Para. 1, Part B, General Conditions of the following licence:

Licence: NWB6FOH0409 Type "B"

## **NUNAVUT WATER LICENCE: NWB6FOH0409 Type “B”**

### **North Warning System Long Range Radar – FOX-MAIN, Hall Beach, Nunavut**

FOX-MAIN, Hall Beach, is a fully attended site, and supports 9 other unattended radar stations within its Zone. In addition to supporting these sites, work at FOX-MAIN itself includes quarterly preventive/corrective maintenance, in-house regulatory compliance audits and inspections, fuel resupply, and third party related projects.

#### **Water Use**

The normal compliment of personnel at FOX-MAIN is 15 people. Among these, some members are day employees from the Hall Beach community, and consequently contribute only minimally to the total water consumption at the site. The calculated total water usage for the site is 821.3 cubic meters. This is based on 150 litres per person per day, with an average daily occupancy rate of 15 persons. This gives an average daily usage of 2.3 cubic meters, below the 10 cubic meters daily allowed by the license. Note that a water meter has since been installed at the site, and for the 2009 report, we will be able to report actual usage.

#### **Hazardous Waste Disposal**

The waste management was consistent with the Nasittuq Environmental Protection Plan, meeting the terms and conditions stipulated in the NWB water licence.

The following items were retrograded to Quebec for disposal in 2007.

Disposal facility: Recyclex, 8381, Place Marien, Montreal-EST Quebec. H1B 5W6

#### **Summary of Waste Retrograde in 2007**

LSS-F	Batteries dry non reg	1 crate
LSS-F	Aircraft grease	1 crate
LSS-F	Waste fuel mixture	4 drums
LSS-F	Waste Varsol	4 drums
LSS-F	Waste fuel filters	1 drum
LSS-F	Waste paint	11 drums
LSS-F	Waste batteries, wet, lead acid	2 crates
LSS-F	Flammable liquid n.o.s	1 drum
LSS-F	Asphalt sealer, non reg	1 drum
LSS-F	Carbon filters	6 drums
LSS-F	Waste oil filters	2 drums
LSS-F	Waste oil	30 drums

### **Non Hazardous Solid Waste Disposal**

All domestic solid waste was disposed of by burning in a burn bin and buried at a designated on-site landfill.

Refer to Annex A for designated landfill location, with GPS coordinates at FOX-M.

### **Sewage Discharge**

The sewage and greywater at FOX-MAIN, Hall Beach, Nunavut is handled by an advanced wastewater treatment system, *Cycle-let*®. The functionality of the system is monitored on-line and maintained by CWC Wastewater Services Inc. on a quarterly basis. Some of the treated water is recycled as on site urinal/toilet flush water, with the excess passing to an outfall. Sampled water quality of the treated water is in Annex C.

Refer to Annex B for sewage outfall location, with GPS coordinates at FOX-M.

### **Monitoring Program**

Refer to Annex C for sewage analysis for FOX-M.

### **Product Spills**

Two spills occurred during this reporting period

Date	Product	Quantity	Cause	Locality
14 Aug 2007	Glycol	40 litres	Coolant hose failure	Inside LSS-F powerhouse building
01 Nov 2007	Glycol	30 litres	Engine hose failure	Inside LSS-F powerhouse building

### **Revisions to the ERP**

No revisions have been effected during this reporting period.

### **Progressive reclamation work undertaken**

There was some reclamation at FOX-MAIN in 2007. However, this work was implemented by Defence Construction Canada (DCC) as part of the larger DEW Line Clean-Up (DLCU) project. As such, this work was not under the care custody or control of Nasittuq Corporation.



## **Annex A**

Designated landfill location, with GPS coordinates at FOX-M.

## FOX-M

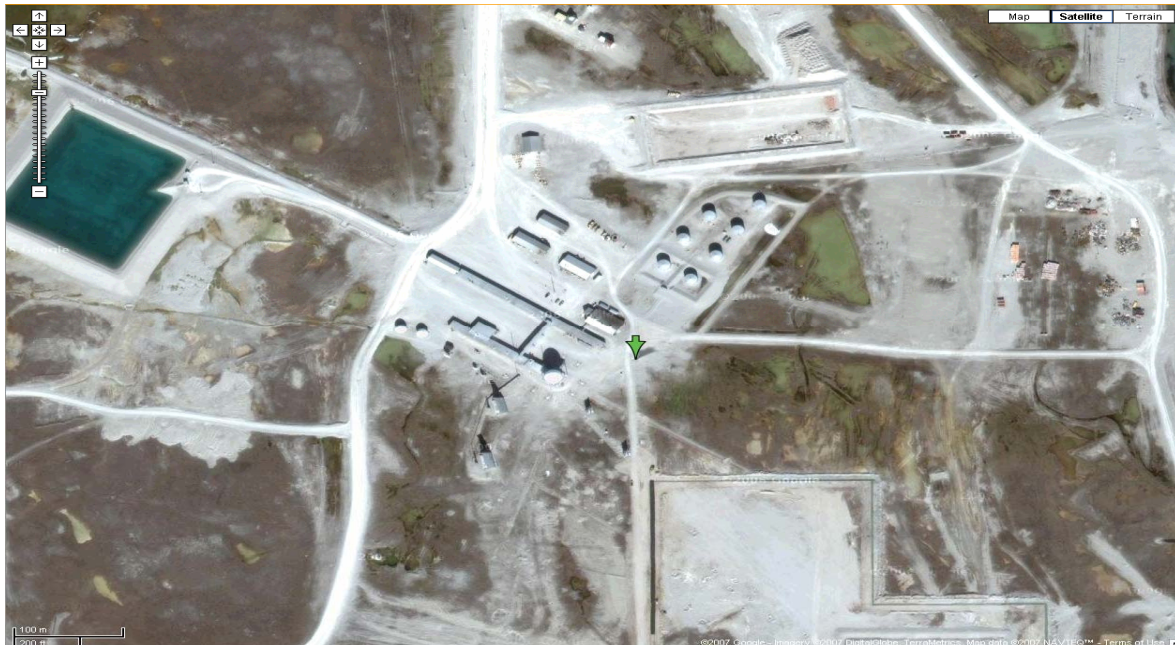


## **Annex B**

Sewage outfall location, with GPS coordinates at FOX-M.



## FOX-M







## **Annex C**

Sewage analysis for FOX-M.



MAR-05-2008 14:13 From:

To: 6137879645

P.6/9

Client/Code

CWC Wastewater Services Inc.  
Suite 1 - 3971 Oakwood St.  
Victoria, BC  
V8N 3M9

Date 04Sep07 1:25p  
Source Discharge  
Type of Sample effluent  
No. of Samples 2

No. W75337

TEL: 386-8953  
FAX: 386-8954  
gary@cwcwastewater.com

Comments Arrival temp.: 17.0C

Sample: Fox Permate

SAMPLE	DATE	TIME	BOD <sub>5</sub> (mg/L)	TSS (mg/L)
Before UV	18Aug07		5.89	6.33
After UV	18Aug07		0.970	0.333
Lab Blank			ND	ND
S <sub>m</sub>			0.300	0.400
REF. VALUE			19.8	210
STD ± 2SD			19.7 ± 1.93	209 ± 11.1

SD = standard deviation

STD = secondary standard calibrated to primary standard reference material

S<sub>m</sub> = standard deviation at zero analyte concentration; method detection limit  
is generally considered to be 3x S<sub>m</sub> value

ND = none detected n/a = not applicable

R. Bilodeau  
Analytical Chemist

H. Hartmann  
Sr. Analytical Chemist



ANALYTICAL & TESTING SERVICES P.O. BOX 2103, SIDNEY, B.C. V8L 3S6

TEL: (250) 656-1334 FAX: 656-0443