

Advisian-Ikpiaryuk JV

Box 25
Arctic Bay, Nunavut
X0A 0A0

Tel: 604-298-1616

advisian.com

Our Ref: 317071-00037
NPC: File No. 149437

14 October 2021

Nunavut Water Board
Gjoa Haven, NU
X0A 0H0 Canada

Email: Richard.dwyer@nwb-oen.ca

Attention: Richard Dwyer, Manager of Licensing

RE: TYPE B PERMIT APPLICATION FOR ARCTIC BAY HARBOUR DEVELOPMENT PROJECT

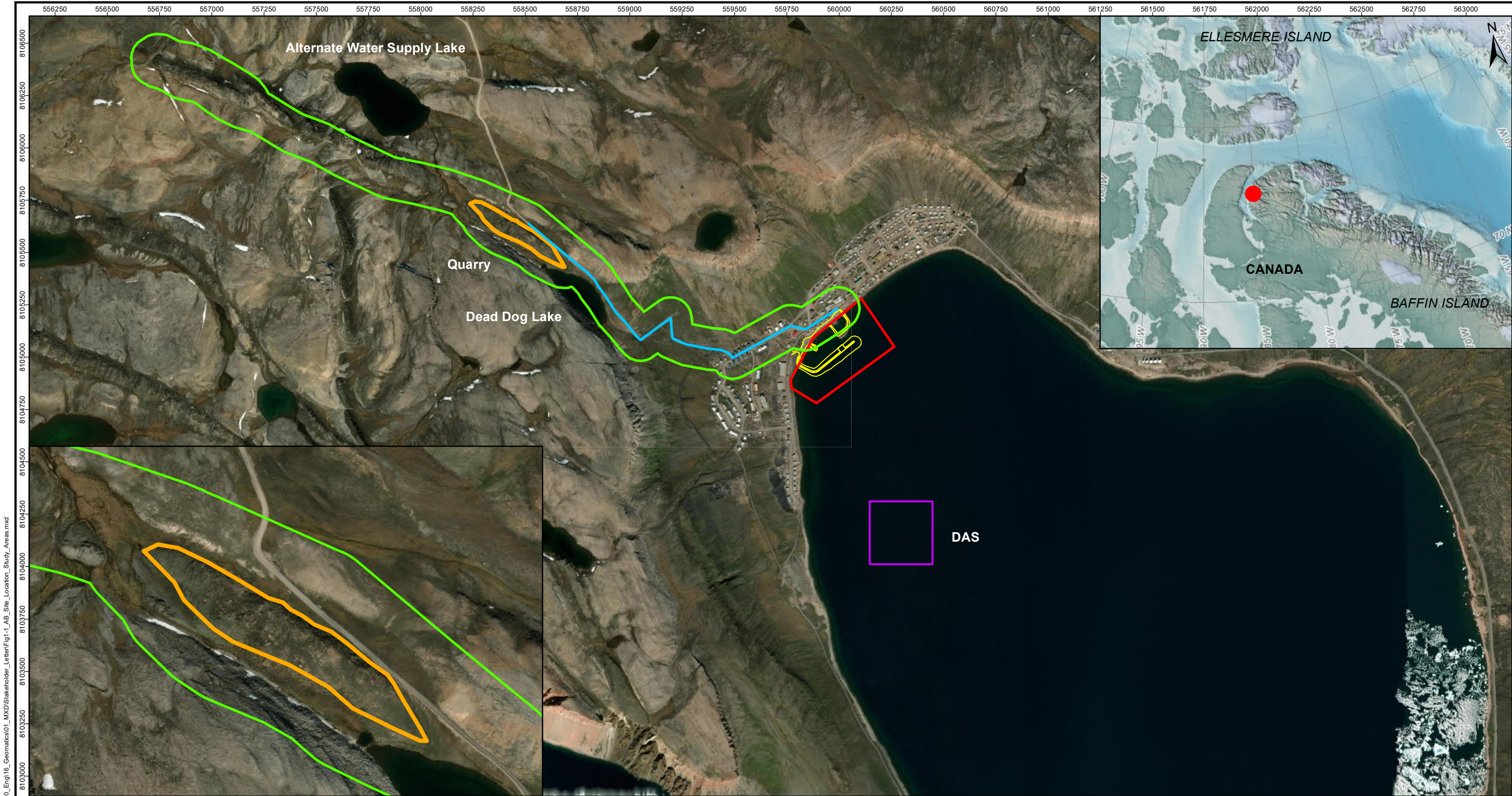
1 Introduction

This document informs the Nunavut Water Board (NWB) Type B permit application for the Arctic Bay Harbour Development Project (the Project) for diversion of watercourses at the Small Craft Harbour (SCH) shoreline.

Worley Canada Services Ltd. and Ikpiaryuk Services Ltd. in joint venture, operating as Advisian-Ikpiaryuk JV, have been retained by Public Services and Procurement Canada (PSPC) to perform detailed design, community consultation support, regulatory support, and construction support services for the Project.

1.1 Project Location

The Project is located at Arctic Bay, a Hamlet on the northwest coast of Baffin Island (Borden Peninsula), in Admiralty inlet (73° 1.529'N, 85° 7.203'W) (see Figure 1-1 and Figure 1-2). It is located in the Qikiqtaaluk Region, within the North Baffin Regional Land Use Plan (NBRLUP) area (Nunavut Planning Commission) (NPC 2000).



FILE LOCATION: U:\VPR\31707100037_PWGS_ArcBayCES10_Eng\16_Geomatics\01_MXD\Stakeholder_Letter\Fig1-1_AE_Site_Location_Study_Areas.mxd

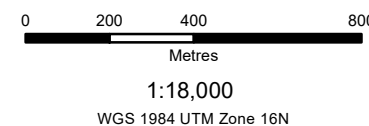
Legend

- Site Location
- SCH Footprint
- Haul Road (existing road to preferred quarry)

Study Areas

- ▭ SCH Study Area
- ▭ DAS Study Area
- ▭ Quarry Study Area
- ▭ Haul Road and Quarry (HRQ) Study Area

Project Study Area = HRQ + SCH Study Areas




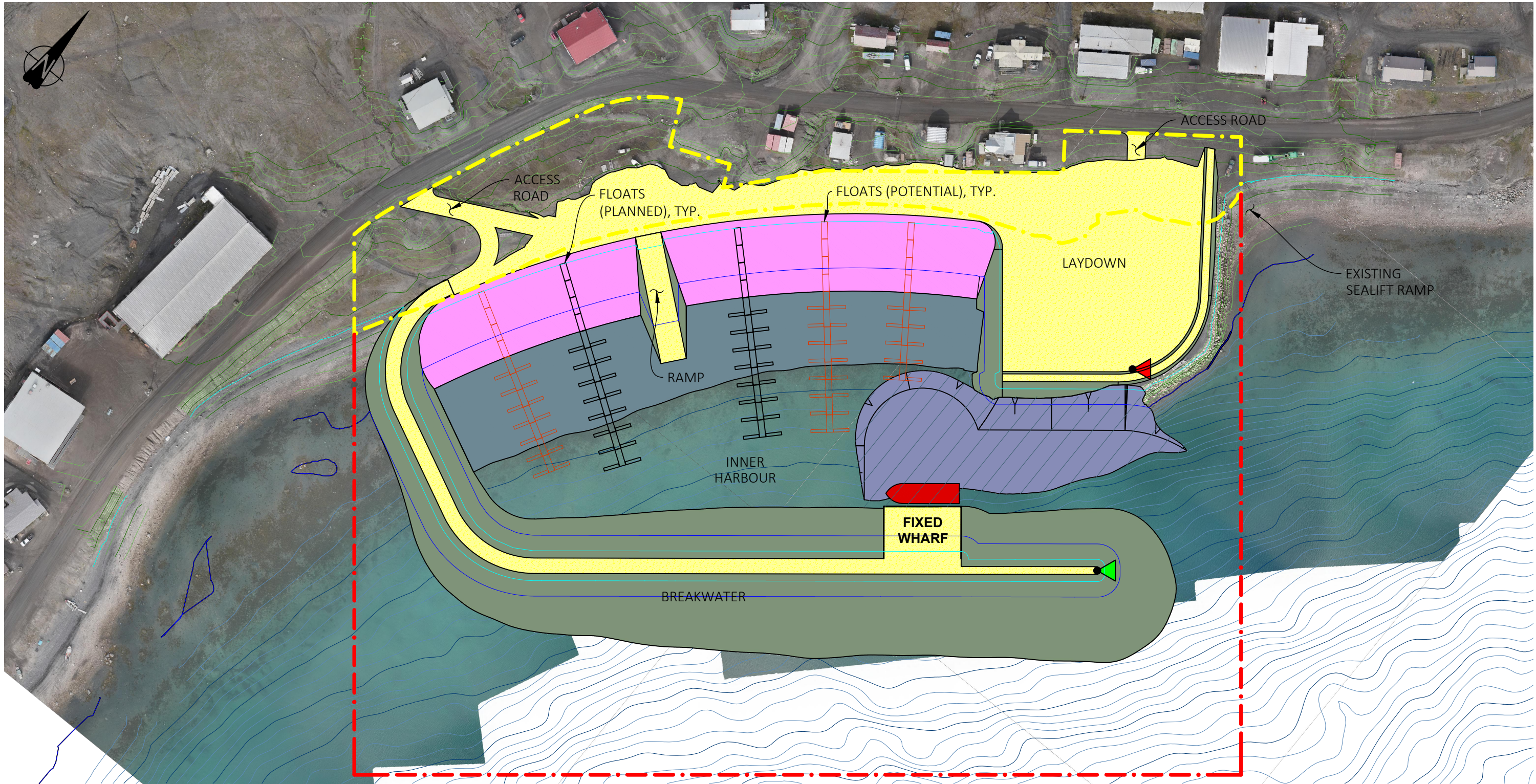
Locations approximate.

FISHERIES AND OCEANS CANADA
SMALL CRAFT HARBOURS
ARCTIC BAY

PROJECT STUDY AREAS AND LOCATION



Date:	25-JUN-21	Drawn by:	KR	Edited by:	KR	App'd by:	VB
 Advisian A member of the IKP Group ᐱᑭ							

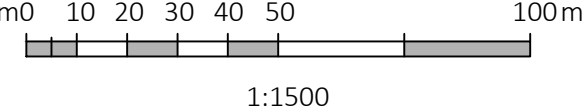


LEGEND:

- BATHYMETRIC CONTOUR (1m INTERVALS)
- BATHYMETRIC CONTOUR (0.5m INTERVALS)
- TOPO CONTOUR (1m INTERVALS)
- TOPO CONTOUR (0.5m INTERVAL)
- GN-CGS LAND TRANSFER
- CIRNAC LAND TRANSFER


- GRAVEL - NON DRIVEABLE
- FILL OR CUT SIDE SLOPE
- GRAVEL - DRIVEABLE
- DREDGE -5m
- DREDGE -1.5m
- NAVIGATION LIGHT


PLAN
1:1500



FISHERIES AND OCEANS CANADA
SMALL CRAFT HARBOURS
ARCTIC BAY

GENERAL ARRANGEMENT



Date: 26-FEB-21	Drawn by: JLC	Edited by: TJM	App'd by: VBC
		Worley Project No. 317071-00037	
FIG No. 1-2		REV 0	

*This drawing is prepared for the use of our customer as specified in the accompanying report.
Worley Canada Services Ltd. assumes no liability to any other party for any representations contained in this drawing.*

317071-00037-00-EN-TEN-0015 R0.docx

2 Project Description

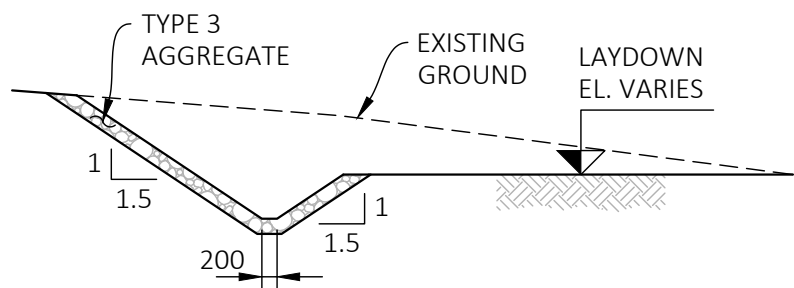
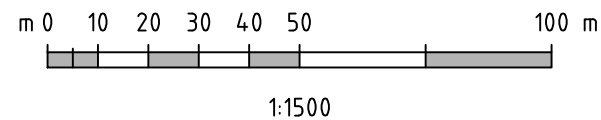
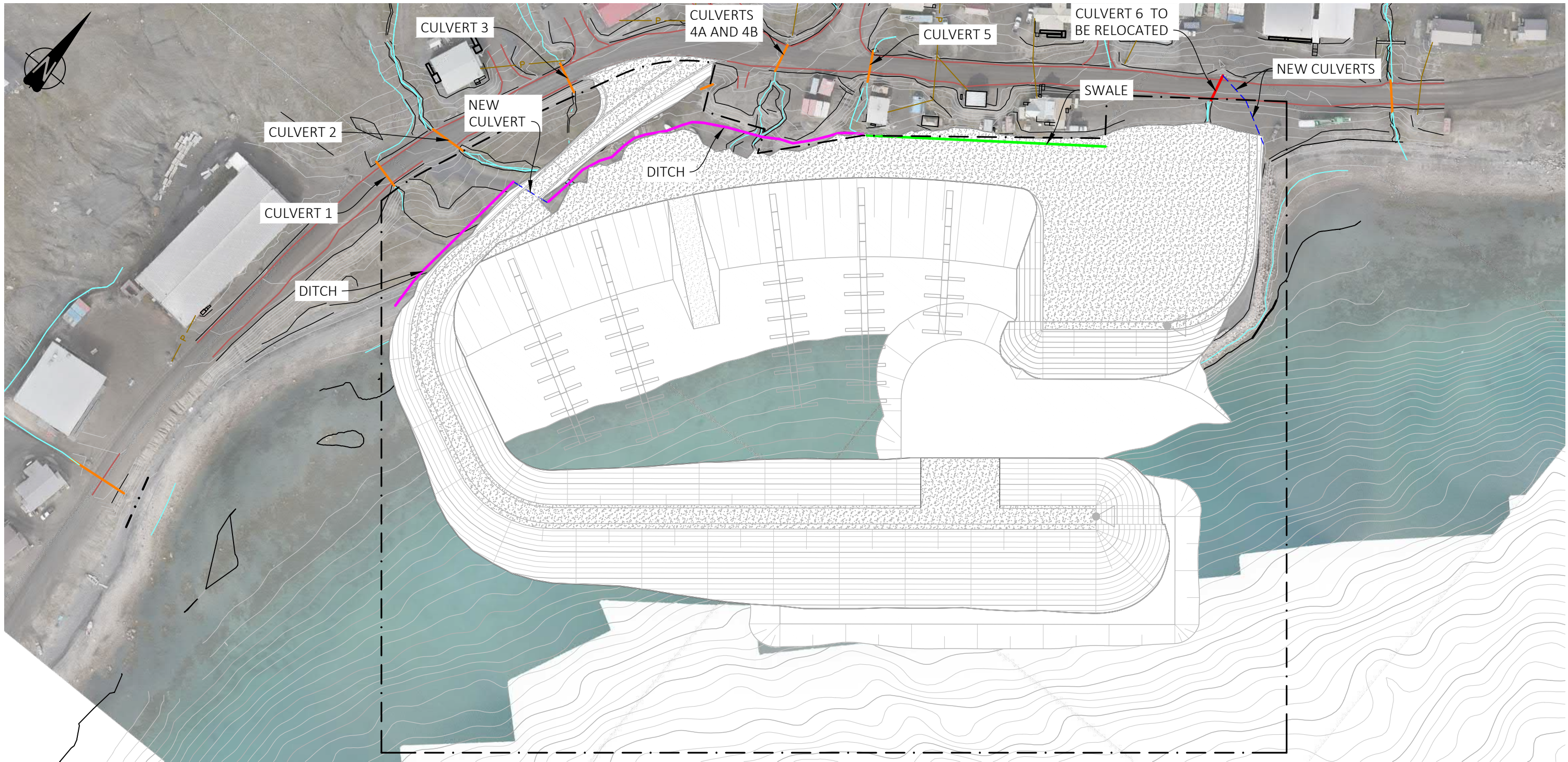
Fisheries and Oceans Canada – Small Craft Harbours (DFO-SCH), through PSPC, is developing a small craft harbour (SCH) in the Hamlet of Arctic Bay, Nunavut. The Project is part of the Inuit Impact and Benefit Agreement (IIBA) (IIBA 2019) negotiated for the Tallurutiup Imanga (Lancaster Sound) National Marine Conservation Area (TI NMCA). The Project will improve safety and access to water, functionality of boating activities, and reduce the congestion and environmental risks associated with the current use of the harbour. The permanent components of the Project include the construction of a new breakwater with fixed wharf, a boat launch ramp, small craft floating docks, laydown area and harbour lighting. The general layout of the SCH is presented Figure 1-2. Temporary uses during construction include a quarry, haul road, and potentially a disposal at sea (DAS) site. Project components are further described in Section 2.1.1 of PSIR document (Advisian-Ikpiaryuk JV 2021f).

2.2 Expected Project Permits

317071-00037-00-EN-TEN-0015 R0.docx

Regulatory/Authorizing Authority	Construction Activity	Required Authorization/ Permit/Approval	Date of Issuance	Date of Expiry	Permit Holder	Legislation
Inuit Boards						
Nunavut Planning Commission (NPC)	Development of land and water resources within Nunavut	Conformity Determination (149437) Attachment 1	2021/01/27		Fisheries and Oceans Canada (DFO)-Small Craft Harbours (SCH)	<i>Nunavut Land Claims Agreement Act</i> (Nunavut Agreement, or NA) Article 11 <i>Nunavut Planning and Project Assessment Act</i> (NuPPAA) <i>Nunavut Waters and Nunavut Surface Rights Tribunal Act</i> (NWNSRTA) (<i>Nunavut Waters and Nunavut Surface Rights Tribunal Act</i> 2002 Nunavut Water Regulations. https://laws-lois.justice.gc.ca/eng/acts/N-28.75/page-2.html#h-370569
Territorial						
Nunavut Impact Review Board (NIRB)	Any development of land and water resources within Nunavut as determined by NPC's conformity determination	Screening Decision Report (SDR) (SDR issued, Permit No. 21UN004) Attachment 2	2021/10/04		DFO-SCH	NuPPAA https://laws-lois.justice.gc.ca/eng/acts/N-28.75/page-2.html#h-370569
Nunavut Water Board (NWB)	Potential for withdrawal of freshwater or the need to cross freshwater crossings for haul road construction	Type B Water Licence			contractor	<i>Nunavut Waters and Nunavut Surface Rights Tribunal Act</i> , Nunavut Water Regulations
	Potential for diversion of small drainage ditch within SCH footprint	Type B Water Licence	In progress		DFO-SCH	https://www.canlii.org/en/ca/laws/requ/sor-2013-69/latest/sor-2013-69.html
GN-Community and Government Services (GN-CGS)	Construction on Commissioners Land or Untitled Municipal Lands. Not expected to be required as the Quarry Administration Agreement (QAA) will be in place which allows the Hamlet to issue a quarry permit. However, if stockpiling occurs outside of the quarry area, the contractor may be required to obtain a Land use Permit (LUP) from GN-CGS	LUP			contractor (if required)	<i>Commissioners Land Act</i> https://www.justice.gov.nt.ca/en/files/legislation/commissioners-land/commissioners-land.a.pdf Commissioners Land Regulations https://www.lands.gov.nt.ca/en/policies-and-legislation Hamlet of Arctic Bay Land Administration By-Law, Consolidation of Explosives Use Act https://laws-lois.justice.gc.ca/eng/acts/e-17/FullText.html
Federal						
Fisheries and Oceans Canada (DFO)	In water or near water works associated with the construction of the SCH that have the ability to result in the harmful alteration, disruption or destruction of fish habitat or in the death of fish, as defined under the <i>Fisheries Act</i> . This will include potential effects to both marine and freshwater courses (if determined to be fish bearing, e.g. water crossings, blasting near water).	<i>Fisheries Act</i> Authorization (FAA)			DFO-SCH	<i>Fisheries Act</i> https://laws-lois.justice.gc.ca/PDF/F-14.pdf

317071-00037-00-EN-TEN-0015_R0.docx



TYPICAL DITCH CROSS SECTION
1:100

PLAN
1:1500

LEGEND:

- EXISTING CULVERT
- EXISTING CULVERT TO BE RELOCATED
- NEW CULVERT
- DITCH
- SWALE

FISHERIES AND OCEANS CANADA
SMALL CRAFT HARBOURS
ARCTIC BAY

DRAINAGE DITCH DIVERSION
GENERAL ARRANGEMENT



Date:	14-OCT-21	Drawn by:	JLC	Edited by:	JLC	App'd by:	VBC
Worley Project No.		317071-00037					
FIG No		2-1		REV		A	

"This drawing is prepared for the use of our customer as specified in the accompanying report.
Worley Canada Services Ltd. assumes no liability to any other party for any representations contained in this drawing."



Figure 2-2 Small Craft Harbour Culvert Locations

2.4 Design Drawings

Works to be conducted will occur both above and below the high water line (HWL) and are summarized in Section 3 of the Construction Environmental Management Plan (CEMP) (Advisian-Ikpiaryuk JV 2021c). Activities specific to NWB are shown on Advisian drawings provided in Attachment 3.

- 317071-00037-00-MA-DGA-1005_RA – General Arrangement
- 317071-00037-00-MA-DGA-1006_RA – Typical Sections

3 Application Information

The Project regulatory team has been in communication with NWB regional staff to discuss potential requirements for a NWB license. This application has been completed with guidance as stipulated on the NWB website for Type B licenses, in addition to communications with NWB staff.

3.1 Application Details

This is provided in Table 3-1 along with the document which contains the information that is required to be provided to NWB in order to make a decision for a Type B water license. The PSIR (Advisian-Ikpiaryuk JV 2021f), ESEB (Advisian-Ikpiaryuk JV 2021d), and CEMP (Advisian-Ikpiaryuk JV 2021c) have been provided along with this application and are available on the Nunavut Impact Review Boards (NIRB) online registry.

Table 3-1 NWB Permit Phases

No	Topic	Information Status
1	Applicant provides a description of the use of waters, deposits of waste or appurtenant undertaking	See Section 2.1 and 2.3
2	The qualitative and quantitative effects of the use of waters or the deposit of waste on the drainage basin where the use is to be undertaken or the deposit is to be made and the anticipated impact of the use of the deposit on other users	There are no negative effects. No changes in water flow, levels or quality are expected. Mitigation and monitoring measures will be in place for the Project as described in the CEMP. See Section 3.3
3	The measure the applicant proposes to take to avoid or mitigate any adverse impact of the use of waters or the deposit of waste	There are no negative effects expected for the diversion of drainage ditches. Mitigation and monitoring measures will be in place for the Project as described in the CEMP. See Section 3.3
4	The measure the applicant proposes to take to compensate persons, including Designated Inuit Organizations (DIO), who are adversely affected by the use of waters or deposit of waste	N/A

3.2 Consultation

3.3 Environmental Management

Mitigation and monitoring measures will be in place for the Project and are further described in the CEMP (Advisian-Ikpiaryuk JV 2021c).

3.4 Options Assessment

The location of the Project was selected as it incorporates the existing breakwater and harbour into the new design, it is centrally located and the community supports the continued operation at its current location. Three preliminary options (Options 1, 2 and 3) were presented to the community in 2019 and 2020 in a feasibility study conducted by DFO-SCH and Advisian (Advisian 2020). Design workshops and community consultations commenced in 2018 and were conducted throughout the feasibility study to discuss the various layouts and associated benefits and disadvantages of each option. Following the study, Option 1 was chosen as the preferred SCH arrangement by the community during consultations conducted by DFO-SCH in February 2020 which included meetings with the Hamlet, HTA, Qikiqtani Inuit Association (QIA) representatives and a public open house (Advisian-Ikpiaryuk JV 2020, 2021h).

Based on the selected Project location, several drainage ditches will need to be diverted in order to reduce sediment accumulation and reduce the need for future dredging. No other options for managing sediment accumulation in the long term were practicable, thus diversion of the drainage ditches is required.

4 Closure

We appreciate NWB taking the time to review our Type B water license as enclosed. Should there be any questions or concerns, please contact Eleanor McEwan at DFO-SCH (email: Eleanor.McEwan@dfo-mpa.gc.ca or telephone: 204-984-1102).

Prepared by:



Laura Borden, M.Sc.

Environmental Consultant, Marine Scientist

Reviewed by:



Victoria Burdett-Coutts, M.Sc., R.P.Bio

Environmental Consultant, Senior Marine Scientist & Regulatory Specialist

Advisian-Ikpiaryuk JV

cc: Eleanor McEwan, Fisheries and Oceans Canada, Small Craft Harbour
Kenton Thiessen, Public Services and Procurement Canada
Joanne Delaronde, Fisheries and Oceans Canada, Small Craft Harbour

Advisian-Ikpiaryuk JV. (2020). Arctic Bay Small Craft Harbour Development: First Consultation Summary Report - September 2020. Prepared for Public Services and Procurement Canada. (*Document No. 317071-00037-00-PM-REP-0001 Consult1, Revision 0*) October 28, 2020.

Advisian-Ikpiaryuk JV. (2021a). Arctic Bay Harbour Development - Coastal Processes and Wave Climate Report. Prepared by Norman Allyn and Hammad Mir for Fisheries and Oceans Canada – Small Craft Harbour. (Document No. 317071-00037-00-CS-REP-0001, Revision 0) March 2021.

Advisian-Ikpiaryuk JV. (2021b). Arctic Bay Harbour Development - Community Consultation Log. Prepared for Public Services and Procurement Canada (PSPC). (*Document No. 317071-00037-00-EN-REG-0001, Revision 0*) July 2021.

Advisian-Ikpiaryuk JV. (2021c). Arctic Bay Harbour Development - Construction Environmental Management Plan. Prepared for Public Services and Procurement Canada. (*Document No. 317071-00037-00-EN-PLN-0003, Revision 0*), July 2021.

Advisian-Ikpiaryuk JV. (2021d). Arctic Bay Harbour Development - Environmental & Socio-Economic Baseline Report. Prepared for Public Services and Procurement Canada. (*Document No. 317071-00037-00-EN-REP-0001, Revision 0*) August 11, 2021.

Advisian-Ikpiaryuk JV. (2021e). Arctic Bay Harbour Development - Project Description. Prepared for Public Services and Procurement Canada and submitted to Nunavut Impact Review Board. (*Document No. 317071-00037-00-PM-REP-0001 PD, Revision 2*) July 26, 2021.

Advisian-Ikpiaryuk JV. (2021f). Arctic Bay Harbour Development - Project Specific Information Requirements (PSIR) document. Prepared for Public Services and Procurement Canada and submitted to Nunavut Impact Review Board (NIRB). (*Document No. 317071-00037-PM-PMT-0003, Revision 0*) July 2021.

Advisian-Ikpiaryuk JV. (2021g). Arctic Bay Harbour Development - Supplementary Report for Fisheries Act Authorization Application. Prepared for Public Services and Procurement Canada and submitted to Fisheries and Oceans Canada. (*Document No. 317071-00037-00-EN-REP-0002, Revision 0*) September 2021.

Advisian-Ikpiaryuk JV. (2021h). Arctic Bay Small Craft Harbour Development: Second Consultation Summary Report - March 2021. Prepared for Public Services and Procurement Canada. (*Document No. 317071-00037-00-PM-REP-0001_Consult2, Revision 0*) April 28, 2021.

Advisian. (2019). Arctic Bay Harbour Development: Community Consultations. Prepared for Fisheries and Oceans Canada – Small Craft Harbours. (*Document No. 307071-01306-00-PM-REP-0002, Revision 0*). December 2019.

Advisian. (2020). Arctic Bay Harbour Development - Feasibility Study. Prepared for Fisheries and Oceans Canada – Small Craft Harbours. (*Document No. 307071-01306-00-MA-REP-0002, Revision 1*), January 14, 2020.

Commissioners Land Act. (1988). R.S.N.W.T. 1988 c.C-11
<https://www.justice.gov.nt.ca/en/files/legislation/commissioners-land/commissioners-land.a.pdf>

Enabling Act: *Commissioners Land Act*.

Last Amended February 26, 2015.

Disclaimer

This Document represents the work of Worley Canada Services Ltd. and Ikpiaryuk Services Ltd. in joint venture, operating as Advisian-Ikpiaryuk JV performed to recognized engineering principles and practices appropriate for the terms of reference provided by Advisian-Ikpiaryuk JV's contractual Customer, Public Services and Procurement Canada (the "Customer"). This Document may not be relied upon for detailed implementation or any other purpose not specifically identified within this Document. This Document is confidential and prepared solely for the use of the Customer. Neither Advisian-Ikpiaryuk JV, its sub consultants nor their respective employees assume any liability for any reason, including, but not limited to, negligence, to any party other than the Customer for any information or representation herein. The extent of any warranty or guarantee of this Document or the information contained therein in favour of the Customer is limited to the warranty or guarantee, if any, contained in the contract between the Customer and Advisian-Ikpiaryuk JV.



**Attachment 1 Conformity Determination –
Nunavut Planning Commission**



NPC FILE No: 149437

Manager, Technical Administration
Nunavut Impact Review Board (NIRB)
P.O. Box 1360, Cambridge Bay, NU X0B 0C0
By email: tmaksagak@nirb.ca, info@nirb.ca

Sustainable Mining and Minerals Division
Natural Resources Canada
By Email: rob.johnstone@canada.ca;
rachelle.besner2@canada.ca

Manager of Licensing
Nunavut Water Board (NWB)
P.O. Box 119, Gjoa Haven, NU X0B 1J0
By email: richard.dwyer@nwb-oen.ca
licensing@nwb-oen.ca

Prairies and Territories Office
Box 8550, 344 Edmonton St
Winnipeg, MB R3C 0P6
By Email: Pnrean-pnreen@tc.gc.ca

Senior Manager, Department of Major Projects
Qikiqtani Inuit Association (QIA)
P.O. Box 1340, Iqaluit NU X0A 0H0
By email: jottenhof@qia.ca;
dmp@qia.ca, saia.gamaniq-mason@canada.ca

Manager Land Administration
Crown-Indigenous Relations and Northern
Affairs Canada (CIRNAC)
P.O. Box 100, Iqaluit, NU X0A 0H0
By email: tracey.mccaie@canada.ca;
isa.gamanig-mason@canada.ca

Manager, Land Use Planning
Department of Environment (GN-DOE)
P.O. Box 1000, Iqaluit, NU X0A 0H0
By email: arobinson@gov.nu.ca;
dgissing@gov.nu.ca

Senior Fisheries Protection Biologist
Fisheries and Oceans Canada (DFO)
5204 50th Ave, suite 301, Yellowknife, NT X1A 1E2
By email: veronique.damours-gauthier@dfo-mpo.gc.ca; fisheriesprotection@dfo-mpo.gc.ca

Fisheries & Oceans Canada - Small Craft
Harbours
501 University Crescent
Winnipeg Manitoba R3T 2N6 Canada
By email: eleanor.mcewan@dfo-mpo.gc.ca

RE: NPC File # 149437 [Arctic Bay Small Craft Harbour Development]

- ttcsyFz 2101
wcl4]gtx6, kNK5 X0B 0C0
sc]ltz 867-983-4625
h4vJ4f5 867-983-4626

P.O. Box 2101
Cambridge Bay, NU X0B 0C0
867-983-4625
867-983-4626

P.O. Box 2101
Ikaluktutiak, NU X0B 0C0
867-983-4625
867-983-4626

- **Location:** Qikiqtani Region; [Arctic Bay].

The following works and activities have been proposed in the above-noted project proposal:

1. Marine based activities: Construction of the community Small Craft Harbor in Arctic Bay to support safe access to land and sea. Activities include the development of a new quarry site and the construction of the following permanent structures: a new breakwater, a fixed wharf, a boat launch ram, small craft floating docks, a sealift landing ramp and a laydown area to be used for sealift storage, boat storage and parking.

A complete description of the project proposal reviewed by the NPC can be accessed online using the link below.

The Nunavut Planning Commission (NPC) has completed its review of the above noted project proposal. The activities associated with this proposal were previously reviewed by NPC, and a conformity determination was issued on June 3, 2019 and December 10, 2020. This conformity determination still applies. In addition, associated activities were previously screened by the Nunavut Impact Review Board (NIRB FILE NO.: 19YN031).

The NPC has determined that the above-noted project proposal is a significant modification to the project because it includes new activities including a new quarry site and the construction of permanent structures. It conforms to the North Baffin Regional Land Use Plan (NBRLUP). The proponent has undertaken to comply with the applicable conformity requirements of Appendix C, H, and I of the NBRLUP.

The above-noted project proposal requires screening by the NIRB under section 12.4.3 of the Nunavut Agreement as amended because it is for a component or activity that was not part of the original or previously amended proposal and its inclusion is a significant modification of the project. By way of this letter, the NPC is forwarding the project proposal with this determination to the NIRB for screening. Project materials, including the applicable conformity requirements, are available at the following address:

<https://lupit.nunavut.ca/portal/project-dashboard.php?appid=149437&sessionid=>

The regulatory authorities to which this letter is addressed are responsible under the Nunavut Planning and Project Assessment Act (NUPPAA) to implement any of the applicable requirements by incorporating the requirements directly, or otherwise ensuring that they must be met, in the terms and conditions of any authorizations issued.

This conformity determination applies only to the above noted project proposal as submitted. Proponents may not carry out projects and regulatory authorities may not issue licenses, permits and other authorizations in respect of projects if a review by the NPC is required. Regulatory authorities may consult with the NPC to obtain recommendations on their duties to implement the existing land use plans prior to issuing licenses, permits and other authorizations under subsection 69(6) of the NUPPAA.

My office would be pleased to discuss how best to implement the applicable requirements and to review any draft authorizations that regulatory authorities wish to provide for that purpose. If you have any questions, please do not hesitate to contact me at (867) 979-3444.

Sincerely,



Goump Djalogue
Senior Planner, MCIP, RPP
Nunavut Planning Commission



**Attachment 2 Screening Decision Report –
Nunavut Impact Review Board**



NIRB File No.: 21UN004
NPC File No.: 149437

October 4, 2021

To: The Honourable Jonathan Wilkinson, P.C.
Minister of Environment and Climate
Change
House of Commons
Ottawa, ON K1A 0A6

The Honourable Bernadette Jordan, P.C.
Minister of Fisheries and Oceans and the
Canadian Coast Guard
House of Commons
Ottawa, ON K1A 0A6

The Honourable Seamus O'Regan
Minister of Natural Resources
House of Commons
Ottawa, ON K1A 0A6

The Honourable Omar Alghabra, P.C.
Minister of Transport
House of Commons
Ottawa, ON K1A 0A6

Sent via email: ec.ministre-minister.ec@canada.ca, Jonathan.wilkinson@parl.gc.ca, min@dfo-mpo.gc.ca, Bernadette.jordan@parl.gc.ca, nrcan.ministre-ministre.rncan@canada.ca, seamus.oregan@parl.gc.ca, questions@tc.gc.ca, and omar.alghabra@parl.gc.ca

Re: Screening Decision for Fisheries and Oceans Canada – Small Craft Harbours’ “Arctic Bay Small Craft Harbour Development” Project Proposal, Qikiqtani (North Baffin) Region

Dear Honourable Ministers:

On January 27, 2021, the Nunavut Impact Review Board (NIRB or Board) received a referral to screen Fisheries and Oceans Canada – Small Craft Harbours’ (DFO – SCH) “Arctic Bay Small Craft Harbour Development” project proposal from the Nunavut Planning Commission (NPC or Commission), with an accompanying positive conformity determination with the North Baffin Regional Land Use Plan.

Pursuant to Article 12, Sections 12.4.1 and 12.4.4 of the *Agreement between the Inuit of the Nunavut Settlement Area and Her Majesty the Queen in right of Canada (Nunavut Agreement)* and s. 87 of the *Nunavut Planning and Project Assessment Act*, S.C. 2013, c. 14, s. 2 (NuPPAA), the NIRB commenced screening this project proposal and assigned it file number **21UN004**.

Following the assessment of all material information provided, the NIRB is recommending that a review of DFO - SCH's "Arctic Bay Small Craft Harbour Development" project is not required pursuant to paragraph 92(1)(a) of the *NuPPAA*.

Pursuant to its discretion under paragraph 92(2)(a) of the *NuPPAA*, the NIRB has determined that specific terms and conditions are appropriate for this project.

Accordingly, the NIRB is issuing the attached Screening Decision Report dated October 4, 2021 to the responsible Ministers. The Screening Decision Report provides, among other things, the regulatory framework, project overview and the NIRB's assessment process, factors relevant for the determining significance of impacts and recommended project-specific terms and conditions.

Please note that the project proposal will not be enclosed due to the size of the electronic document and the limited bandwidth. However, an electronic copy of the project proposal is accessible online from the NIRB's online public registry at www.nirb.ca/project/125580.

Please note that, the Board only directly addresses these notice letters to those individuals considered to be a "responsible Minister with decision-making authority" for the project as set out under the *NuPPAA*. However, regulatory authorities and other authorizing agencies associated with a proposed project (e.g., Regional Inuit Associations, Nunavut Water Board) will continue to be copied on the Notice of Release of the Screening Decision Report. The NIRB is providing these parties with notice and access to the Board's Screening Decision Report as required under s. 200(2) and in support of these parties in the fulfillment of their responsibilities under the *NuPPAA* and the *Nunavut Agreement* to address, and as appropriate, implement, to the fullest extent possible, any relevant NIRB recommendations contained in the Screening Decision Report.

We look forward to receiving a response from the responsible Ministers and the NIRB remains available for consultation with the Ministers regarding this report as necessary. If you have any questions or require clarification, please do not hesitate to contact the NIRB's Director, Technical Services, Tara Arko at (867) 983-4611 or tarko@nirb.ca.

Sincerely,



Kaviq Kaluraq
Chairperson
Nunavut Impact Review Board

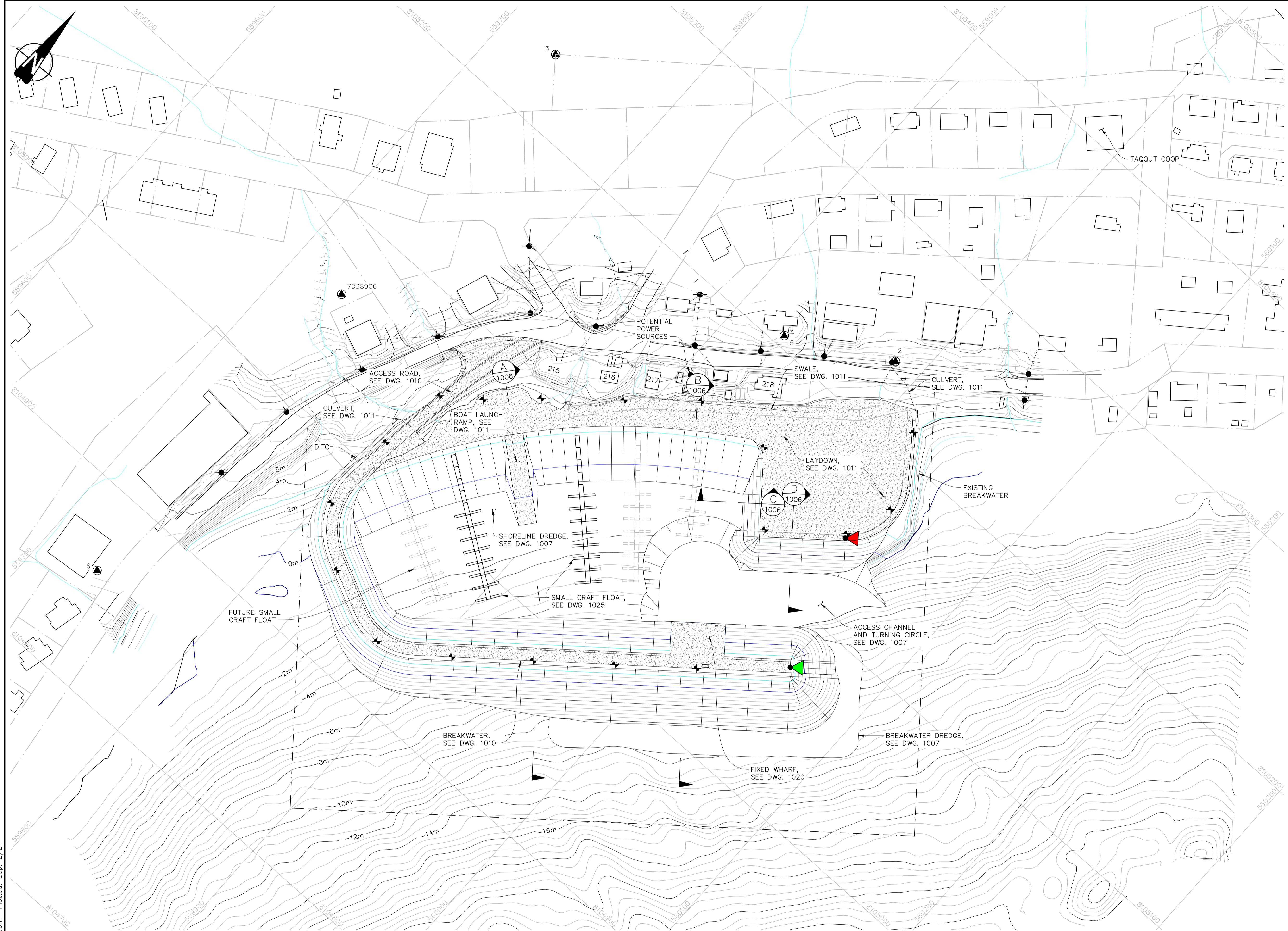
Enclosure (1): Screening Decision Report, NIRB File No.: 21UN004 (October 4, 2021)

cc: Lootie Toomasie, Chairperson of the Nunavut Water Board



Attachment 3 Design Drawings

Filename: U:\VR\317071\00037_PWGS_ArcBayCES\11_Drawings\15_L_and_E\02_Marine\317071-00037-00-MA-DGA-1005.dwg - Layout1
Last Saved: Sep. 02/21 6:09pm Plotted: Sep. 2/21



PLAN
1:1000

Public Works and Government Services Canada

Travaux publics et Services gouvernementaux Canada

REAL PROPERTY SERVICES

Western Region

SERVICES IMMOBILIERS

Région de l'ouest

Advisian

ΔΙΑΚΥΒΕΡΝΗΤΙΚΗ
Ikpiaryuk Services Ltd.

317071-00037

THIS DRAWING IS PREPARED FOR THE USE OF THE CONTRACTUAL CUSTOMER OF WORLEY CANADA SERVICES LTD. AND WORLEY CANADA SERVICES LTD. ASSUMES NO LIABILITY TO ANY OTHER PARTY FOR ANY REPRESENTATIONS CONTAINED IN THIS DRAWING.

PRELIMINARY

NOT FOR CONSTRUCTION

LEGEND:

MONUMENT

EXISTING POWER POLE

PROPOSED POWER POLE AND LIGHTING

NAVIGATION LIGHT

NOTES:

1. FOR GENERAL NOTES SEE DWG.--1001

0 10 20 30 40 50 m

1:1000

Revision	Description	Date
A	ISSUED FOR 66% DESIGN REVIEW	2021/09/02

Client

client

FISHERIES AND OCEANS CANADA

SMALL CRAFT HARBOURS

501 UNIVERSITY CRESCENT

WINNIPEG, MANITOBA, R3T 2N6

Project title

Projet

ARCTIC BAY, NUNAVUT

ARCTIC BAY HARBOUR DEVELOPMENT

Designed by

PAIGE CROMPTON

Drawn by

JENNIFER COPPENDALE

Approved by

HARALD KULLMANN

PWSSC Project Manager

KENTON THIESSEN

Conçu par

Dessiné par

Approuvé par

Administrateur de Projets TPSSC

Drawing title

Titre du dessin

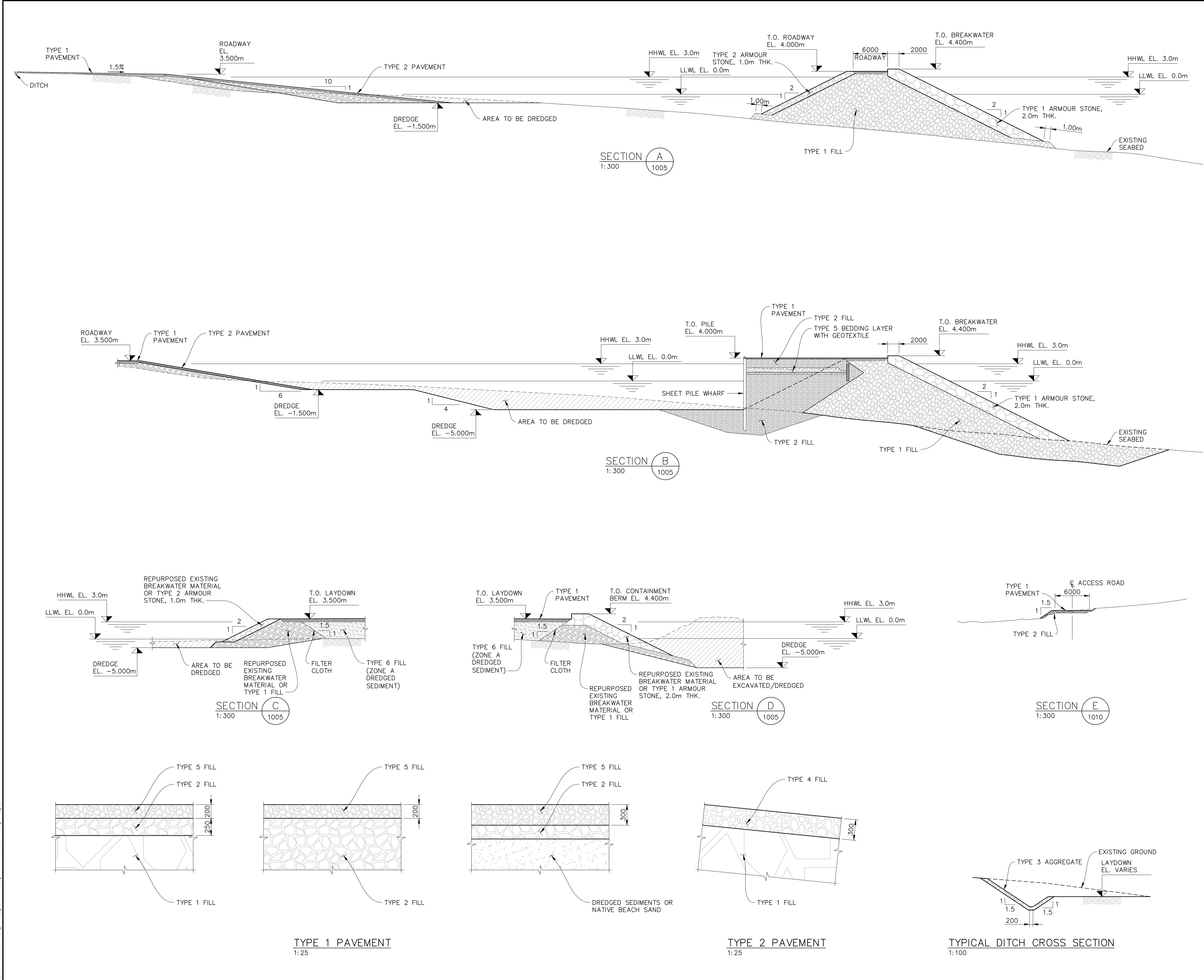
GENERAL ARRANGEMENT

Project no./No. du projet	Drawing no./No. du dessin	Revision no.
317071-00037	1005	A
	OF	

0 10 20 30 40 50 60 70 80 90 100mm

317071-00037-00-MA-DGA-1005

Filename: U:\VR\317071\00037_PWGS_ArcBayCES\11_Drawings\15_L_and_E\02_Marine\317071-00037-00-MA-DGA-1006.dwg
Last Saved: Sep. 02/21 5:58pm Plotted: Sep. 2/21

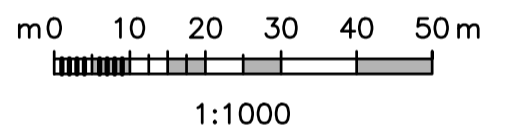


PRELIMINARY
NOT FOR CONSTRUCTION



NOTES:

1. ALL ELEVATIONS ARE REFERENCED TO
HYDROGRAPHIC TIDE AND CHART (CHS)
DATUM.



Revision	Description	Date
A	ISSUED FOR 66% DESIGN REVIEW	2021/09/02

FISHERIES AND
OCEANS CANADA
SMALL CRAFT HARBOURS

501 UNIVERSITY CRESCENT
WINNIPEG, MANITOBA, R3T 2N6

Project title
ARCTIC BAY, NUNAVUT

ARCTIC BAY
HARBOUR DEVELOPMENT

Designed by PAIGE CROMPTON	Conçu par
Drawn by BRIAN MASSULLO	Dessiné par
Approved by HARALD KULLMANN	Approuvé par
PWSSC Project Manager KENTON THIESSEN	Administrateur de Projets TPSSC
Drawing title	Titre du dessin

TYPICAL SECTIONS

Project no./No. du projet	Drawing no./No. du dessin	Revision no.
317071-00037	1006	A



Attachment 4 Type B Permit Form



P.O. Box 119

GJOA HAVEN, NU X0B 1J0

TEL: (867) 360-6338

FAX: (867) 360-6369

kNK5 wmoEp5 vtmp5

NUNAVUT WATER BOARD

NUNAVUT IMALIRIYIN KATIMAYIT

OFFICE DES EAUX DU NUNAVUT

GENERAL WATER LICENCE APPLICATION (APPLICATION FOR NEW WATER LICENCE)

The applicant is referred to the NWB's Guide 4: *Guide to Completing and Submitting a Water Licence Application for a New Licence* for more information about this application form.

LICENCE NO: (for NWB use only)	
1. APPLICANT (PROPOSED LICENSEE) CONTACT INFORMATION (name, address) Eleanor McEwan, Senior Project Engineer Fisheries and Oceans Canada, Small Craft Harbour 501 University Crescent Winnipeg, MB R3T 2N6 Phone: 204-984-1102 Fax: e-mail: Eleanor.McEwan@dfo-mpa.gc.ca	2. APPLICANT REPRESENTATIVE CONTACT INFORMATION if different from Block 1 (name, address) See block 1 Phone: Fax: e-mail: (Attach authorization letter.)
3. NAME OF PROJECT (including the name of the project location) Arctic Bay Harbour Development, Arctic Bay	
4. LOCATION OF UNDERTAKING Project Extents NW: Latitude: (° ' " N) Longitude: (° ' " W) N 8104993.870 E 559767.375 NE: Latitude: (° ' " N) Longitude: (° ' " W) N 8105239.899 E 560010.448 SE: Latitude: (° ' " N) Longitude: (° ' " W) N 8105048.023 E 560166.351 SW: Latitude: (° ' " N) Longitude: (° ' " W) N 8104831.224 E 559899.529 Camp Location(s) – no camp will be required for the purposes of this NWB permit application Latitude: (° ' " N) Longitude: (° ' " W)	
5. MAP - Attach a topographical map, indicating the main components of the undertaking. See Figure 1, attached.	

NTS Map Sheet No.: 16N Map Name: Project Location and Drainage Ditches Map Scale: 1:50,000

6. **NATURE OF INTEREST IN THE LAND** - Check any of the following that are applicable to the proposed undertaking (at least one box under the 'Surface' header must be checked).

Sub-surface

☐ Mineral Lease from Nunavut Tunngavik Incorporated (NTI)
Date (expected date) of issuance: _____ Date of expiry: _____

☐ Mineral Lease from Indian and Northern Affairs Canada (INAC)
Date (expected date) of issuance: _____ Date of expiry: _____

Surface

☐ Crown Land Use Authorization from Indian and Northern Affairs Canada (INAC)
Date (expected date) of issuance: _____ Date of expiry: _____

☐ Inuit Owned Land (IOL) Authorization from Kitikmeot Inuit Association (KIA)
Date (expected date) of issuance: _____ Date of expiry: _____

☐ IOL Authorization from Kivalliq Inuit Association (KivIA)
Date (expected date) of issuance: _____ Date of expiry: _____

☐ IOL Authorization from Qikiqtani Inuit Association (QIA)
Date (expected date) of issuance: _____ Date of expiry: _____

☐ Commissioner's Land Use Authorization
Date (expected date) of issuance: _____ Date of expiry: _____

☒ Other: land will be transferred to the proponent prior to start of construction
Date (expected date) of issuance: 05-2021 Date of expiry: N/A

Name of entity(s) holding authorizations: _____

7. **NUNAVUT PLANNING COMMISSION (NPC) DETERMINATION**

Indicate the land use planning area in which the project is located.

- | | |
|--|---|
| <input checked="" type="checkbox"/> North Baffin | <input type="checkbox"/> Keewatin |
| <input type="checkbox"/> South Baffin | <input type="checkbox"/> Sanikiluaq |
| <input type="checkbox"/> Akunnig | <input type="checkbox"/> West Kitikmeot |

Is a land use plan conformity determination required?

☒ Yes ☐ No

If Yes, indicate date issued and attach copy: January 27, 2021 (permit no. 149437). See Section 2.2 and attachment 2 of supporting letter.

If No, provide written confirmation from NPC confirming that a land use plan conformity review is not required.

8. NUNAVUT IMPACT REVIEW BOARD (NIRB) DETERMINATION

Is an Article 12 Part 4 screening determination required?

☒ Yes

☐ No

If Yes, indicate date issued and attach copy: [October 4, 2021 \(permit no. 21UN004\). See section 2.2 and attachment 3 of supporting letter.](#)

If No, provide written confirmation from NIRB confirming that a screening determination is not required.

9. DESCRIPTION OF UNDERTAKING – List and attach plans and drawings or project proposal.

[Fisheries and Oceans Canada – Small Craft Harbours \(DFO-SCH\) through Public Services and Procurement Canada \(PSPC\) is developing a small craft harbour \(SCH\) in the Hamlet of Arctic Bay, Nunavut. The Project is part of the Inuit Impact and Benefit Agreement \(IIBA\) \(IIBA 2019\) negotiated for the Tallurutiup Imanga \(Lancaster Sound\) National Marine Conservation Area \(TI NMCA\). The Project will improve safety and access to water, functionality of boating activities, and reduce the congestion and environmental risks associated with the current use of the harbour. The permanent components of the Project include the construction of a new breakwater with fixed wharf, a boat launch ramp, small craft floating docks, laydown area and harbour lighting.](#)

[See supporting letter for further information regarding drainage ditch diversions at the SCH.](#)

10. OPTIONS – Provide a brief explanation of the alternative methods or locations that were considered to carry out the project.

[The location of the Project was selected as it incorporates the existing breakwater and harbour into the new design, it is centrally located and the community supports the continued operation at its current location. Three preliminary options \(Options 1, 2 and 3\) were presented to the community in 2019 and 2020. Through design workshops and community consultations Option 1 was chosen as the preferred SCH arrangement by the community during consultations conducted by DFO-SCH in February 2020.](#)

11. CLASSIFICATION OF PRIMARY UNDERTAKING - Indicate the primary classification of undertaking by checking one of the following boxes.

☐ Industrial

☐ Agricultural

☐ Mining and Milling (includes exploration/drilling/exploration camps)

☐ Conservation

☐ Municipal (includes camps/lodges)

☐ Recreational

☐ Power

☒ Miscellaneous (describe below):

See Schedule II of *Northwest Territories Waters Regulations* for Description of Undertakings.

Information in accordance with applicable Supplemental Information Guidelines (SIG) must be submitted with a New Water Licence Application. Indicate which SIG(s) are applicable to your application.

☐ Hydrostatic Testing

	<div style="display: flex; flex-direction: column; gap: 5px;"> <div><input type="checkbox"/> Tannery</div> <div><input type="checkbox"/> Tourist / Remote Camp</div> <div><input type="checkbox"/> Landfarm & On-Site Storage of Hydrocarbon Contaminated Soil</div> <div><input type="checkbox"/> Onshore Oil and Gas Exploration Drilling</div> <div><input type="checkbox"/> Mineral Exploration / Remote Camp</div> <div><input type="checkbox"/> Advanced Exploration</div> <div><input type="checkbox"/> Mine Development</div> <div><input type="checkbox"/> Municipal</div> <div><input checked="" type="checkbox"/> General Water Works</div> <div><input type="checkbox"/> Power</div> </div>
12.	<p>WATER USE - Check the appropriate box(s) to indicate the type(s) of water use(s) being applied for.</p> <div style="display: flex; flex-wrap: wrap; gap: 10px;"> <div style="width: 50%;"> <input type="checkbox"/> To obtain water for camp/ municipal purposes <input type="checkbox"/> To obtain water for industrial purposes <input type="checkbox"/> To cross a watercourse <input type="checkbox"/> To alter the flow of, or store water <input type="checkbox"/> Other: _____ </div> <div style="width: 50%;"> <input checked="" type="checkbox"/> To divert a watercourse <input type="checkbox"/> To modify the bed or bank of a watercourse <input type="checkbox"/> Flood control </div> </div>
13.	<p>QUANTITY AND QUALITY OF WATER INVOLVED - For each type of water use indicated in Block 12, provide the source of water, the quality of the water source and available capacity, the estimated quantity to be used in cubic meters per day, method of extraction, as well as the quantities and qualities of water to be returned to source.</p> <p>Name of water source(s) (show location(s) on map): watercourse are unnamed drainage ditches (culverts) along the shoreline of the SCH (see Figure 2-1 in support letter)</p> <p>Describe the quality of the water source(s) and the available capacity: N/A</p> <p>Provide the overall estimated quantity of water to be used: 0 m³/day</p> <p>Provide the estimated quantity(s) of water to be used from each source: N/A</p> <p>Indicate the estimated quantities to be used for each purpose (camp, drilling, etc.) N/A</p> <p>Describe the method of extraction(s): N/A</p> <p>Estimated quantity(s) of water returned to source(s) N/A m³/day</p> <p>Describe the quality of water(s) returned to source(s) untouched</p>
14.	<p>WASTE – Check the appropriate box(s) to indicate the types of waste(s) generated and deposited.</p> <div style="display: flex; flex-wrap: wrap; gap: 10px;"> <div style="width: 50%;"> <input type="checkbox"/> Sewage <input type="checkbox"/> Solid Waste <input type="checkbox"/> Hazardous <input type="checkbox"/> Bulky Items/Scrap Metal <input type="checkbox"/> Animal Waste <input checked="" type="checkbox"/> Other (describe): no wastewater generated </div> <div style="width: 50%;"> <input type="checkbox"/> Waste oil <input type="checkbox"/> Greywater <input type="checkbox"/> Sludges <input type="checkbox"/> Contaminated soil and/or water </div> </div>
15.	<p>QUANTITY AND QUALITY OF WASTE INVOLVED – For each type of waste indicated in Block 14, describe its composition, quantity in cubic meters/day, method of treatment and method of disposal.</p>

Type of Waste	Composition	Quantity Generated	Treatment Method	Disposal Method
N/A	N/A	N/A	N/A	N/A

16. OTHER AUTHORIZATIONS – In addition to the sub-surface and surface land use authorizations provided in Block 6, indicate any other authorizations required in relation to the proposed undertaking. For each provide the following: [Refer to table 2-1 in supporting letter](#)

Authorization: _____

Administering Agency: _____

Project Activity: _____

Date (expected date) of issuance: _____ Date of expiry: _____

17. PREDICTED ENVIRONMENTAL IMPACTS OF UNDERTAKING AND PROPOSED MITIGATION MEASURES - Describe direct, indirect, and cumulative impacts related to water and waste.

[There are no environmental impacts expected for the diversion of drainage ditches. Changes to water quality or flow are not anticipated as water will only be redirected elsewhere. See Section 3.3 of supporting letter.](#)

18. WATER RIGHTS OF EXISTING AND OTHER USERS OF WATER

Provide the names, addresses and nature of use for any known persons or properties that may be adversely affected by the proposed undertaking, including those that hold licences for water use in precedent to the application, domestic users, in-stream users, authorized waste depositors, owners of property, occupiers of property, and/or holders of outfitting concessions, registered trapline holders, and holders of other rights of a similar nature.

Advise the Board if compensation has been paid and/or agreement(s) for compensation have been reached with any existing or other users.

[N/A – No adverse effects anticipated by these proposed works.](#)

19. INUIT WATER RIGHTS

Advise the Board of any substantial affect of the quality, quantity or flow of waters flowing through Inuit Owned Land (IOL), and advise the Board if negotiations have commenced or an agreement to pay compensation for any loss or damage has been reached with one or more Designated Inuit Organization (DIO).

N/A – No adverse effects anticipated by these proposed works.										
20.	<p>CONSULTATION – Provide a summary of any consultation meetings including when the meetings were held, where and with whom. Include a list of concerns expressed and measures to address concerns.</p> <p>See Section 3.2 of supporting letter for summary of consultations that have been ongoing since the feasibility stage of the Project.</p>									
21.	<p>SECURITY INFORMATION</p> <p>Provide an estimate of the total financial security for final reclamation equal to the total outstanding reclamation liability for land and water combined sufficient to cover the highest liability over the life of the undertaking. <u>Estimates of reclamation costs must be based on the cost of having the necessary reclamation work done by a third party contractor if the operator defaults.</u> The estimate must also include contingency factors appropriate to the particular work to be undertaken.</p> <p>Where applicable, the financial security assessment should be prepared in a manner consistent with the principals respecting mine site reclamation and implementation found in the <i>Mine Site Reclamation Policy for Nunavut</i>, Indian and Northern Affairs Canada, 2002.</p> <p>Not Applicable for federal government proponents.</p>									
22.	<p>FINANCIAL INFORMATION</p> <p>Provide a statement of financial responsibility.</p> <p>If the applicant is a business entity, provide a list of the officers of the company.</p> <p>If the applicant is a business entity attach a copy of the Certificate of Incorporation or evidence of registration of the company name.</p> <p>Not Applicable for federal government proponents.</p>									
23.	<p>STUDIES UNDERTAKEN TO DATE - List and attach copies of studies, reports, research, etc.</p> <p>Environmental Socio-Economic Baseline (ESEB) report summarizes marine, terrestrial and geotechnical investigations undertaken between 2019-2021. See NIRB registry for full ESEB report.</p>									
24.	<p>PROPOSED TIME SCHEDULE – Indicate the proposed start and completion dates for each applicable phase of development (construction, operation, closure, and post closure).</p> <table border="0"> <tr> <td><u>Construction</u></td> <td></td> <td></td> </tr> <tr> <td>Proposed Start Date:</td> <td>07/2022 (month/year)</td> <td>Proposed Completion Date: 10/2025 (month/year)</td> </tr> <tr> <td><u>Operation</u></td> <td></td> <td></td> </tr> </table>	<u>Construction</u>			Proposed Start Date:	07/2022 (month/year)	Proposed Completion Date: 10/2025 (month/year)	<u>Operation</u>		
<u>Construction</u>										
Proposed Start Date:	07/2022 (month/year)	Proposed Completion Date: 10/2025 (month/year)								
<u>Operation</u>										

<p>Proposed Start Date: <u>10/2025</u> (month/year)</p> <p><u>Closure</u> Proposed Start Date: <u>N/A</u> (month/year)</p> <p><u>Post - Closure</u> Proposed Start Date: <u>N/A</u> (month/year)</p>	<p>Proposed Completion Date: <u>N/A</u> (month/year)</p> <p>Proposed Completion Date: <u>N/A</u> (month/year)</p> <p>Proposed Completion Date: <u>N/A</u> (month/year)</p>
<p>For each applicable phase of development indicate which season(s) activities occur.</p> <p><u>Construction</u> <input type="checkbox"/> Winter <input type="checkbox"/> Spring <input checked="" type="checkbox"/> Summer <input checked="" type="checkbox"/> Fall <input type="checkbox"/> All season </p> <p><u>Operation</u> <input type="checkbox"/> Winter <input type="checkbox"/> Spring <input type="checkbox"/> Summer <input type="checkbox"/> Fall <input checked="" type="checkbox"/> All season </p> <p><u>Closure</u> <input type="checkbox"/> Winter <input type="checkbox"/> Spring <input type="checkbox"/> Summer <input type="checkbox"/> Fall <input type="checkbox"/> All season </p> <p><u>Post - Closure</u> <input type="checkbox"/> Winter <input type="checkbox"/> Spring <input type="checkbox"/> Summer <input type="checkbox"/> Fall <input type="checkbox"/> All season </p>	
<p>25. PROPOSED TERM OF LICENCE</p> <p>Number of years (maximum of 25 years): <u>3</u> years</p> <p>Requested Date of Issuance: <u>07/2022</u> (month/year)</p> <p>Requested Expiry Date: <u>10/2025</u> (month/year)</p> <p>(The requested date of issuance must be <u>at least</u> three (3) months from the date of application for a type B water licence and <u>at least</u> one (1) year from the date of application for a type A water licence, to allow for processing of the water licence application. These timeframes are approximate and do not account for the time to complete any pre-licensing land use planning or development impact requirements, time for the applicant to prepare and submit a water licence application in accordance with any project specific guidelines issued by the NWB, or the time for the applicant to respond to requests for additional information. See the NWB's <i>Guide 5: <u>Processing Water Licence Applications</u></i> for more information)</p>	
<p>26. ANNUAL REPORTING – If not using the NWB's <i>Standardized Form for Annual Reporting</i>, provide details regarding the content of annual reports and a proposed outline or template of the annual report.</p> <p><u>Annual reports will be submitted to NWB (before March 31) using NWB's standardized form.</u></p>	

27. CHECKLIST – The following must be included with the application for the water licensing process to begin.

Written confirmation from the NPC confirming that NPC's requirements regarding land use plan conformity have been addressed.

☒ Yes ☐ No If no, date expected _____

Written confirmation from the NIRB confirming that NIRB's requirements regarding development impact assessment have been addressed.

☒ Yes ☐ No If no, date expected _____

Completed General Water Licence Application form.

☒ Yes ☐ No If no, date expected _____

Information addressing Supplemental Information Guideline (SIG) , where applicable (see Block 11)

☒ Yes ☐ No If no, date expected _____

English Summary of Application.

☒ Yes ☐ No If no, date expected _____

Inuktitut and/or Inuinnaqtun Summary of Application.

☒ Yes ☐ No If no, date expected _____

Application Fee of \$30.00 CDN (Payee Receiver General for Canada).

☒ Yes ☐ No If no, date expected _____

Water Use Fee Deposit of \$30.00 CDN (Payee Receiver General for Canada). The actual water use fee will be calculated by the NWB based upon the amount of water authorized for use in accordance with the Regulations at the time of issuance of the licence.

☒ Yes ☐ No If no, date expected _____

28. SIGNATURE

Eleanor McEwan

**Senior Project
Engineer**

Name (Print)

Title (Print)

Signature

Date



- Legend**
- Site Location
 - Culvert to be Diverted
 - SCH Footprint



0 500 1,000 2,000
Metres
1:50,000
WGS 1984 UTM Zone 16N

Locations approximate.

FISHERIES AND OCEANS CANADA
SMALL CRAFT HARBOURS
ARCTIC BAY

PROJECT LOCATION AND DRAINAGE DITCHES



Date:	13-OCT-21	Drawn by:	KR	Edited by:	KR	App'd by:	VB
Project No.		317071-00037		REV		0	
FIG No		1					

"This drawing is prepared solely for the use of our customers as specified in the accompanying report.
Worley Canada Services Ltd. assumes no liability to any other party for any representations contained in this drawing."

FILE LOCATION: U:\VVR\317071\00037_PWGS_ArcBay\CES10_Eng\16_Geomatics\01_MXD\fig1_NTS_50K_Culverts.mxd

Imagery Source: Source: Esri, Maxar, GeoEye, Earthstar Geographics, CNES/Airbus DS, USDA, USGS, AeroGRID, IGN, and the GIS User Community & Google Earth (2016)

PLOT DATE & TIME: 10/13/2021 4:31:42 PM USER NAME: Kenneth W. Ritchie
SAVE DATE & TIME: 10/13/2021 4:31:24 PM ISSUING OFFICE: BURNABY GIS