



Arctic Bay Small Craft Harbour Development

Fifth Consultation Summary Report- July 2025

Public Services and Procurement Canada

August 28, 2025

317071-00037 Rev A

Advisian
Worley Group

ᐃᐅᐱᐱᐱᐱᐱᐱᐱᐱ ᐃᐅᐅᐅᐅᐅᐅᐅᐅᐅ
Ikpiaryuk Services Ltd.



1 Introduction

This report summarizes community feedback received during the fifth round of consultations conducted in Arctic Bay in July 2025 for the Arctic Bay Harbour Development Project (the Project). Previous community consultations for the Project were conducted in September 2020, March 2021, September 2021, and December 2021 (See Advisian-Ikpiaryuk documents 317071-00037-00-PM-REP-0001_R0-Consult1, 317071-00037-00-PM-REP-0001_R1-Consult2, 317071-00037-00-PM-REP-0001_R0-Consult3 and 317071-00037-00-PM-REP-0001_R0-Consult4).

A joint meeting was conducted on July 8, 2025, with the Hamlet; the Ikajutit Hunters and Trappers Association (HTA); QIA local community representatives; and the Arctic Bay Nauttiqsuqtit (the Guardians). Chris Meisl, lead port engineer at Advisian-Ikpiaryuk and Adele Butcher, project lead at Department of Fisheries and Oceans (DFO) facilitated the meeting in person. Representatives from the (DFO) and Public Services and Procurement Canada (PSPC) were also in attendance.

Introductory welcoming remarks and introductions were provided by Tom Hoggarth, Regional Director General of Arctic Region DFO and David Tinley, Regional Director Small Craft Harbours DFO. Ms. Butcher then presented an overview of the project team, schedule, past consultations and feedback. Mr. Meisl then guided the discussion using a slide presentation that covered the following topics: the following topics:

- Harbour Layout and Components Quarry Location and Haul Route
- Construction - Workforce, Camp, Activities, Laydown
- Harbour Access During Construction
- Construction – Anticipated Impacts and Mitigation
- Disposal of Dredged Sediments
- Local Employment and Business Opportunities.
- Project Hamlet Approvals
- Permitting
- Proposed Conditions for the *Fisheries Act* Authorization
- Upcoming Field Activities
- Contractor Consultation
- Next Steps

Presentation slides were provided in English and Inuktitut and local interpreter, Ida Allurat and Kataisie Attagutsiak, provided interpretation. Large-scale posters of the harbour layout, quarry locations, and haul route were also provided to support discussions at the meeting. A copy of the presentation is provided in Appendix A. We are grateful to the residents of Arctic Bay who graciously shared their time and knowledge with us during the community consultation visit.



Appendix A
Presentation Slides – July, 2025 Meeting



Agenda ከበረኞቻችን

- Introduction of Project Team
- የግብይት ለውጥ ለውጥ ለውጥ ለውጥ ለውጥ
- Review of Scope of the Project
- የግብይት ለውጥ ለውጥ ለውጥ ለውጥ ለውጥ
- Proposed Project Timelines
- ለውጥ ለውጥ ለውጥ ለውጥ ለውጥ
- Community Resources
- ለውጥ ለውጥ ለውጥ ለውጥ ለውጥ
- Impacts to the Community During Construction
- ለውጥ ለውጥ ለውጥ ለውጥ ለውጥ
- Status of Regulatory Permits
- ለውጥ ለውጥ ለውጥ ለውጥ ለውጥ



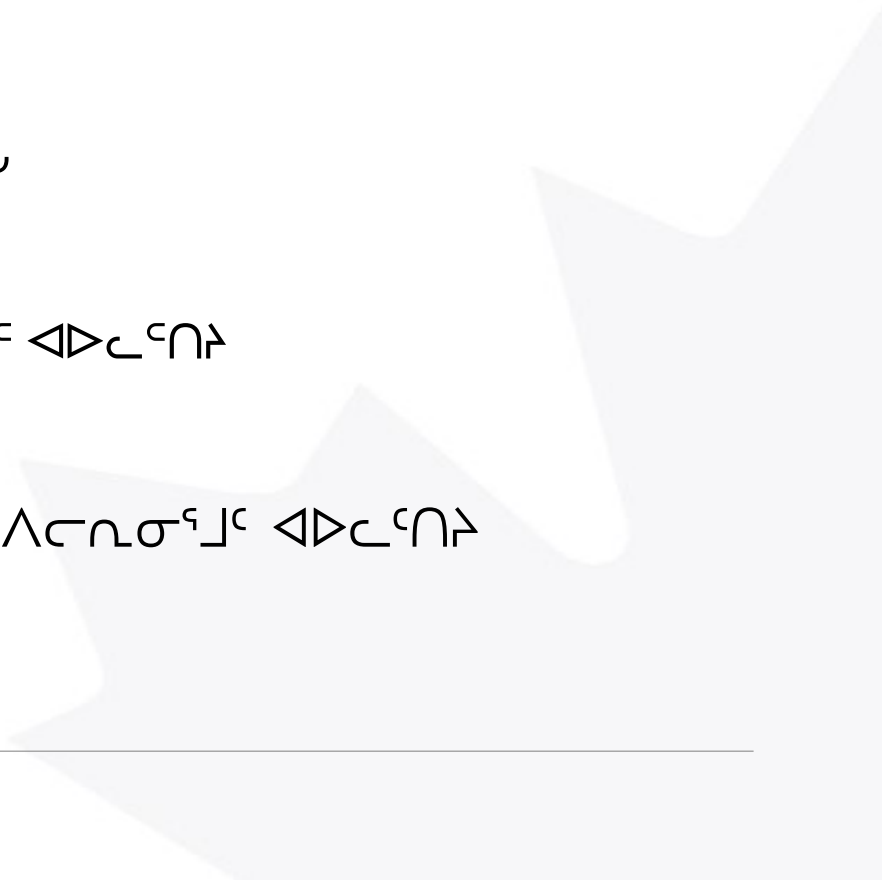


INTRODUCTIONS ᐃᑭᑦᐸᑦᐸᑦ

HARBOUR CONSTRUCTION PROJECT TEAM

ᐃᑭᑦᐸᑦᐸᑦ ᑭᑦᐸᑦᐸᑦᐸᑦ ᐸᑦᐸᑦᐸᑦ ᐸᑦᐸᑦᐸᑦ

- Adele Butcher – DFO Project Lead
- ᐸᑦᐸᑦᐸᑦ ᐸᑦᐸᑦᐸᑦ – ᐃᑭᑦᐸᑦᐸᑦᐸᑦ ᐸᑦᐸᑦᐸᑦᐸᑦ ᐸᑦᐸᑦᐸᑦ
- Eleanore McEwan – DFO Engineering lead
- ᐃᑭᑦᐸᑦᐸᑦ ᐸᑦᐸᑦᐸᑦ – ᐃᑭᑦᐸᑦᐸᑦᐸᑦ ᑭᑦᐸᑦᐸᑦᐸᑦᐸᑦ ᐸᑦᐸᑦᐸᑦᐸᑦ
- Kenton Thiessen – PSPC Project Manger
- ᐸᑦᐸᑦᐸᑦ ᐸᑦᐸᑦᐸᑦ – ᐃᑭᑦᐸᑦᐸᑦ ᐸᑦᐸᑦᐸᑦᐸᑦ ᐸᑦᐸᑦᐸᑦᐸᑦ ᐸᑦᐸᑦᐸᑦᐸᑦ ᐸᑦᐸᑦᐸᑦᐸᑦ
- Abolade Ayoola– PSPC Project Manager
- ᐸᑦᐸᑦᐸᑦ ᐸᑦᐸᑦᐸᑦ – ᐃᑭᑦᐸᑦᐸᑦ ᐸᑦᐸᑦᐸᑦᐸᑦ ᐸᑦᐸᑦᐸᑦᐸᑦ ᐸᑦᐸᑦᐸᑦᐸᑦ ᐸᑦᐸᑦᐸᑦᐸᑦ
- Chris Meisl– Lead Port Engineer for Advisian-Ikpiaryuk
- ᐃᑭᑦᐸᑦᐸᑦ ᐸᑦᐸᑦᐸᑦᐸᑦ ᐸᑦᐸᑦᐸᑦᐸᑦ–ᐃᑭᑦᐸᑦᐸᑦᐸᑦ



Project Overview **ካዲትፕሮጀክት ስራ ማጠቃለያ**

OWNERSHIP
ሊዩዎንስታን

Fisheries and Oceans Canada (DFO) – Small Craft Harbours
ፈረንሳይያን ስራ - ገጽገጽ ስራ ገጽገጽ

DETAILED DESIGN
ካዲትፕሮጀክት ስራ

2020 – 2021

ENVIRONMENTAL PERMITTING & PROPERTY ACQUISITION
አካባቢ ስራ ስራ ስራ ስራ

2021 – 2022

CONSTRUCTION TENDER AWARD
ካዲትፕሮጀክት ስራ ስራ ስራ

Fall 2025/Winter 2026
ገጽገጽ 2025/ገጽገጽ 2026

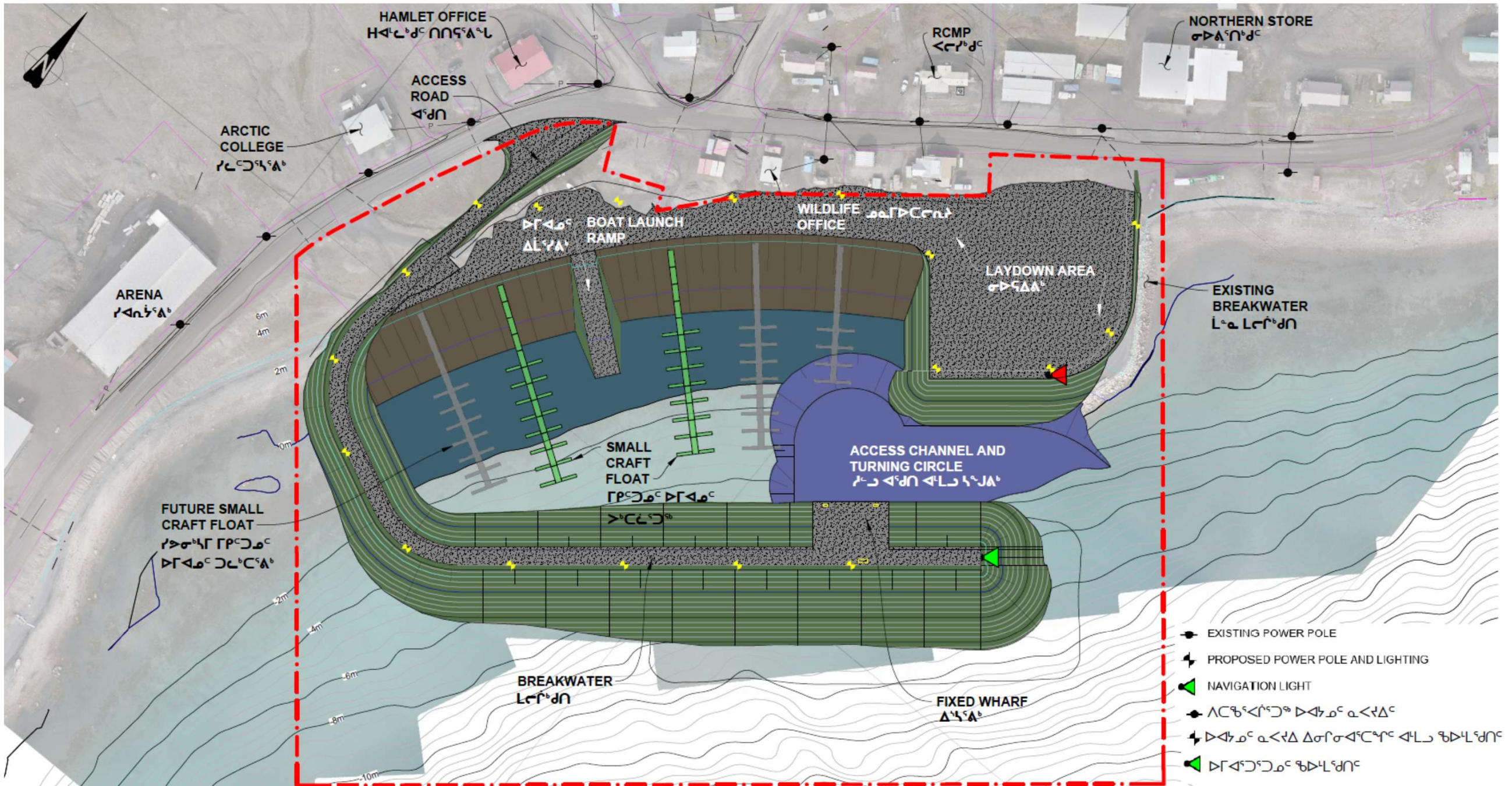
CONSTRUCTION COMPLETE
ካዲትፕሮጀክት ስራ

Fall 2029
ገጽገጽ 2029

OPERATIONS
አካባቢ ስራ

Summer 2030
ገጽገጽ 2030

HARBOUR LAYOUT ᐃᓕᓐᓂᓐᓂᓐ ᐱᓐᓂᓐᓂᓐᓂᓐ



Example Small Craft Harbour Mittimatalik (Pond Inlet)

ᐃᑭᑦᐅᑦᐅᑦ ᐅᑦᐅᑦᐅᑦ ᑦᑦᑦᑦ ᐅᑦᐅᑦᐅᑦ
ᑦᑦᑦᑦᑦᑦ



Small Craft Harbour Components

መደብ ለግልጽ ልጋራ

Harbour Size

- 1 hectare

Breakwater

- Width: 6m
- Crushed gravel surface (Drivable)

Boat Launch Ramp

- Width: 10m

Storage/Parking Area

- Total area: 1 hectare

Dredging

- Harbour – min. depth ~1.5 m
- Large Float – min. depth ~5 m
- Entrance Channel - ~30m wide, min. depth ~5m

(1 hectare = ~7 hockey rinks)

Fixed Wharf

- Width: 30m
- 45 m turning circle

Floating Docks:

- Two strings of floating docks for 32 boats

Lighting:

- Navigation lights
- Area/Security lights

ግልጽ ልጋራ

- ዘላቂ ልጋራ

ግልጽ ልጋራ

- ስፋት: 6 ሾር
- ግልጽ ልጋራ (ግልጽ ልጋራ)

ግልጽ ልጋራ

- ስፋት 10 ሾር

ግልጽ ልጋራ/ግልጽ ልጋራ

- ልጋራ ስፋት: 1 ዘላቂ ልጋራ

ግልጽ ልጋራ ልጋራ

- ግልጽ ልጋራ - ግልጽ ልጋራ ልጋራ 1.5 ሾር
- ልጋራ ልጋራ ልጋራ ልጋራ - ግልጽ ልጋራ ልጋራ 5 ሾር
- ልጋራ ልጋራ ልጋራ - ስፋት 30 ሾር,
- ግልጽ ልጋራ ልጋራ 5 ሾር

ግልጽ ልጋራ

- ስፋት: 30 ሾር
- 45 ሾር ግልጽ ልጋራ ልጋራ ልጋራ

ግልጽ ልጋራ ልጋራ :

- ልጋራ ልጋራ 32 ልጋራ ልጋራ ልጋራ

ግልጽ ልጋራ

- ግልጽ ልጋራ ልጋራ
- ልጋራ ልጋራ ልጋራ ልጋራ



(1 hectare = ~7 hockey rinks)

Floating Docks (Pangnirtung) ᑭᑦᑲᑦᑲᑦᑲᑦ ᑲᑦᑲᑦᑲᑦᑲᑦ (ᑲᑦᑲᑦᑲᑦᑲᑦ)





Breakwater ሊረገጥልን





Rock Placement ᐃᓴᓃᓃᓃ ᐃᓃᐃᓴᓴᓃᓃᓃᓃᓃ



Dredging

ᐃᓴᓴᓴᓃᓃ ᐱᓴᐃᓃᓴᓴᓃᓃ



Dredging

ᐃᓴᓴᓴᓃᓃ ᐱᓴᐃᓃᓴᓴᓃᓃ



Rock Placement ᐃᓴᓃᓃᓃ ᐃᓃᐃᓴᓴᓃᓃᓃᓃᓃ



Breakwater ᐅᓃᓴᓴᓃᓃ



Rock Placement

ᐃᓴᓃᓃᓃ ᐃᓃᐃᓴᓴᓃᓃᓃᓃᓃ

Breakwater Construction (Pond Inlet) ᐅᓃᓴᓴᓃᓃ ᓴᓴᓴᓴᓃᓃᓃᓃ (ᐅᓃᓃᐅᓃᓃᓃ)



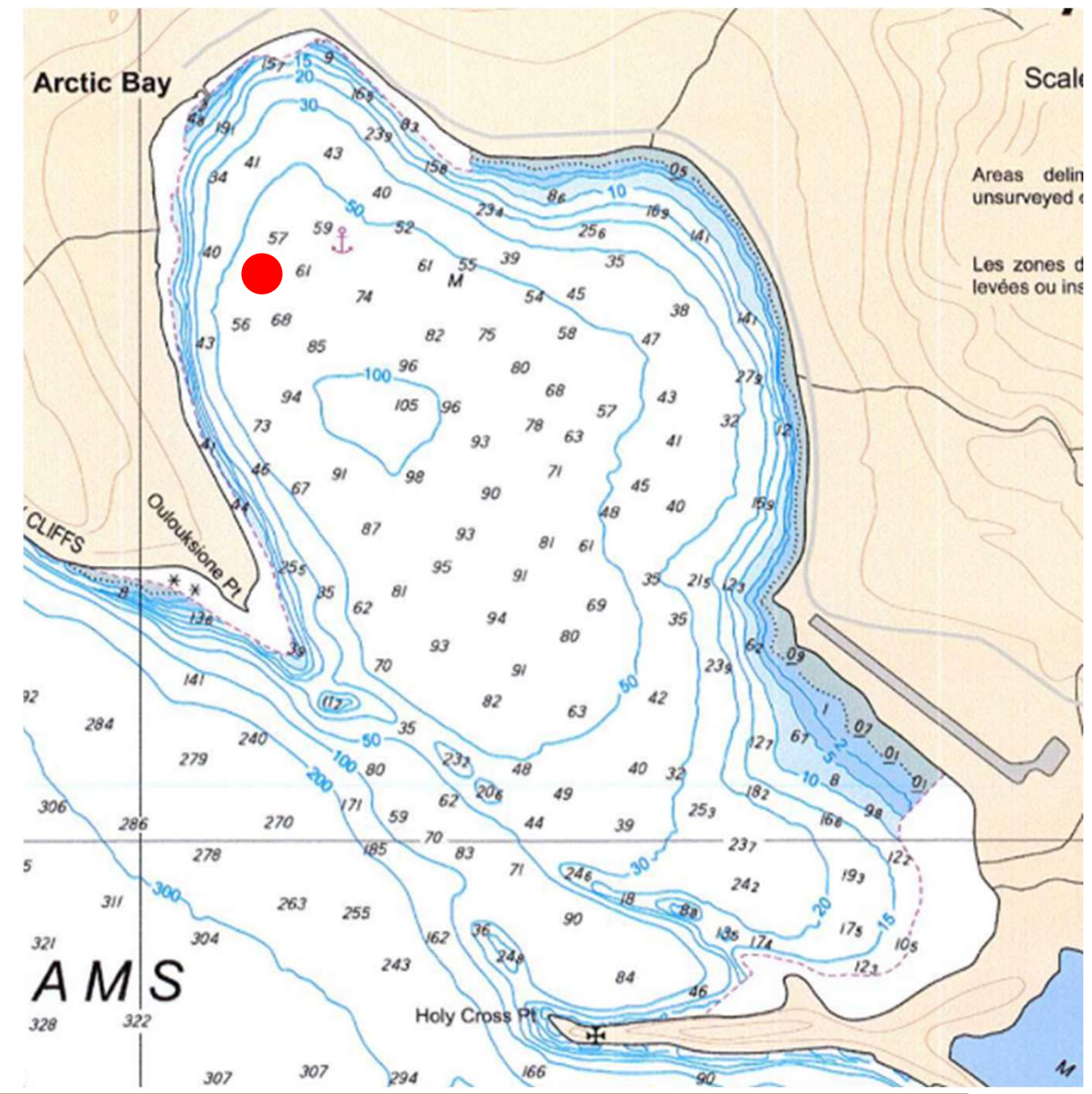
Disposal of Dredged Sediments ᐃᖃᖅᓴᓂᑦ ᐱᖃᑦᑕᐅᖃᖅ ᐃᑦᑕᐅᓂᖅ

- Offshore disposal needed for 35,000 cubic metres -
 ᑕᓴᐅᖃᑦ ᐃᖃᖅᓴᓂᖅᓴᑦᑕᐅᖃᖅ ᐃᑦᑕᐅᖃᖅᑕᓂᐅᖃᖅ
 ᐱᖃᑦᑕᐅᓂ 35,000 ᑦᑕᓴᓂᖃᑦᑕᓂ

- Some sediments reused
 ᐃᑕᖃᑦ ᐃᖃᖅᓴᓂᖅᓴᑦᑕᐅᖃᖅ ᐱᖃᑦᑕᐅᖃᖅᓂᑦᑕᓂ

- Planned site: ᐱᖃᑦᑕᐅᖃᖅ ᐃᓂᖅ:
 - 0.5 km away from harbour
 0.5 ᑦᑕᓴᑕᓂᖅ ᐅᖅᓴᓂᖃᖅᓂᑦᑕᓂ ᐅᑦᑕᐅᖃᖅᓂᑦᑕᓂ
 - 50-60 metres deep
 50-60 ᑦᑕ ᐃᓂᖅᓂᑦᑕᓂ

- Possible 24-Hour dredging activities
 ᖃᖅᑦᑕᐅᖃᖅᓂᑦᑕᓂ 24 ᐃᖃᖅᓴᓂᖅ ᐃᖃᖅᓴᓂᖅ ᐃᖃᖅᓴᓂᖅ



LAND BASED DREDGING (PANGNIRTUNG)

ᐃᐱᐱ ᐱᓴᐃᐱᐱᐱᐱᐱ (ᐱᐱᐱᐱᐱᐱᐱᐱᐱ)





MARINE BASED DREDGING (PANGNIRTUNG) Cn▷⁹Γ Δ⁹b⁹σ^c Λ⁹Δσ^{9b} (◀^aσ^c▷^{9b})



MARINE BASED DREDGING (PANGNIRTUNG)
ርኪጋፕ ልግግሪ ለጎልጎል (ግግሪ)





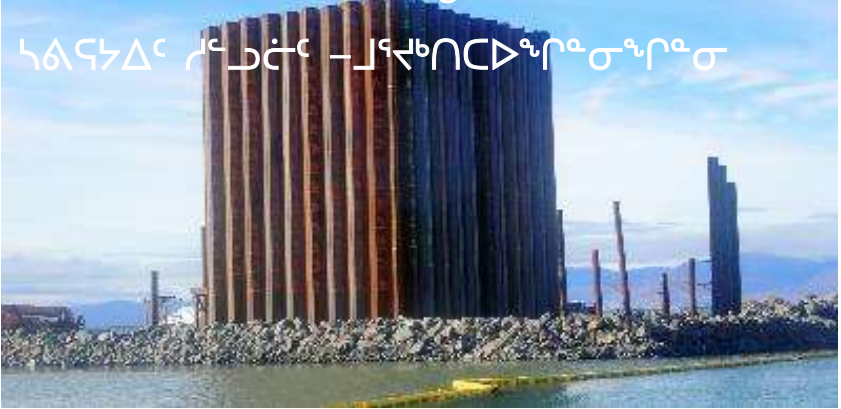
Sheet Piles ካልፍለገልግ ስራ ስራ ስራ ስራ ስራ



Sheet Pile Placement ካልፍለገልግ ስራ ስራ ስራ ስራ ስራ



Sheet Piles—before driving ካልፍለገልግ ስራ ስራ ስራ ስራ ስራ



Template ስራ ስራ ስራ ስራ ስራ



Sheet Piles—Partially Driven ካልፍለገልግ ስራ ስራ ስራ ስራ ስራ



Vibro Pile Driving ስራ ስራ ስራ ስራ ስራ



Wharf Construction (Pond Inlet)

ስራ ስራ ስራ ስራ ስራ



ካልግሪድሮድ (ጸጭርጋጭ)
TIE RODS (PANGNIRTUNG)





Blasting ናጅኖባኖኔርኖጅጅ



Loaded Haul Truck

ጋራኖራሃሊጅጅ ጋራኔርጋባ ጋጋሃጋባጅጅጅ



Road Maintenance ልኔጋባ ልኔጋባጋጋጅጅ



Crushing Rock

ራኔርባጅ ጋራኖጅጅ



Loading Haul Truck ጋራኔርኖጅ ጋጋሃጋባጅጅጅ



Stockpiling Rock

ኔባኖጅ ጋራኖጅጅ

Quarry Operations (Pond Inlet) ጋራኔርኖጅጅ ልጋጋጋጅጅ (ገርባጋጋጅጅ)



Quarry Operations ▶ ⚡ ⑆ ⑆ ⑆ ⑆ ⑆





Project Hamlet Approvals ካዲጋጊጥፍ ዘገገረጎፊ ልዩጥፍጥፍ

- Obtained by the contractor
- ኮንትራክታር ለካገገረጎፊ ልዩጥፍጥፍ

- Quarry Permit
- ገንጥፍ ስፔሻላይዥን ለጥፋት

- Traffic Management Plan
- ልዩጥፍጥፍ ለጥፋት

- Camp Location
- ገንጥፍ ስፔሻላይዥን ለጥፋት

- Laydown Area Location(s)
- ለጥፋት ስፔሻላይዥን ለጥፋት

- Explosives Magazine Storage Location(s)
- ጥፋት ስፔሻላይዥን ለጥፋት





Permitting ᐱᓐᓂᓐᓂᓐ ᐱᓐᓂᓐᓂᓐ

Obtained by DFO

ᐱᓐᓂᓐᓂᓐ ᐱᓐᓂᓐᓂᓐ ᐱᓐᓂᓐᓂᓐ

- Nunavut Impact Review Board (NIRB) – Received in 2022
- **ᐱᓐᓂᓐᓂᓐ ᐱᓐᓂᓐᓂᓐ ᐱᓐᓂᓐᓂᓐ** - ᐱᓐᓂᓐᓂᓐ ᐱᓐᓂᓐᓂᓐ 2022
- Nunavut Water Board – water withdrawal, redirection – Received in 2022
- **ᐱᓐᓂᓐᓂᓐ ᐱᓐᓂᓐᓂᓐ ᐱᓐᓂᓐᓂᓐ** - ᐱᓐᓂᓐᓂᓐ ᐱᓐᓂᓐᓂᓐ - ᐱᓐᓂᓐᓂᓐ ᐱᓐᓂᓐᓂᓐ 2022
- Transport Canada – Navigation Protection Program – Received in 2022
- **ᐱᓐᓂᓐᓂᓐ ᐱᓐᓂᓐᓂᓐ ᐱᓐᓂᓐᓂᓐ** - ᐱᓐᓂᓐᓂᓐ ᐱᓐᓂᓐᓂᓐ ᐱᓐᓂᓐᓂᓐ - ᐱᓐᓂᓐᓂᓐ ᐱᓐᓂᓐᓂᓐ 2022
- DFO - Fish and Fish Habitat Protection Program – Updated in 2025
- **ᐱᓐᓂᓐᓂᓐ ᐱᓐᓂᓐᓂᓐ ᐱᓐᓂᓐᓂᓐ** - ᐱᓐᓂᓐᓂᓐ ᐱᓐᓂᓐᓂᓐ ᐱᓐᓂᓐᓂᓐ - ᐱᓐᓂᓐᓂᓐ 2025-ᐱᓐ
- ECCC – Disposal at Sea Application – Permit Renewal in Progress
- **ᐱᓐᓂᓐᓂᓐ ᐱᓐᓂᓐᓂᓐ ᐱᓐᓂᓐᓂᓐ** - ᐱᓐᓂᓐᓂᓐ ᐱᓐᓂᓐᓂᓐ ᐱᓐᓂᓐᓂᓐ - ᐱᓐᓂᓐᓂᓐ
- ᐱᓐᓂᓐᓂᓐ ᐱᓐᓂᓐᓂᓐ ᐱᓐᓂᓐᓂᓐ ᐱᓐᓂᓐᓂᓐ ᐱᓐᓂᓐᓂᓐ



