

Legend

- Proposed Road
- RSA Boundary

Telemetry Location by Herd

- Ahiak
- Beverly
- Lorillard
- Qamanirjuaq
- Wager Bay

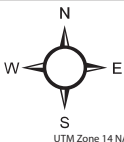
Amaruq Exploration Road
Post-calving Caribou
Collaring Data
(June 26 - July 31)



77 Wyndham Street South • Guelph ON N1E 5R3
T 519.822.1609 • F 519.822.5389 • www.dougan.ca

PROJECT: DA14-053-01

CLIENT: Agnico Eagle Mines Limited



DATE: NOVEMBER 2014
SCALE: 1:2,500,000
DRAWN BY: Caslys
CHECKED BY:

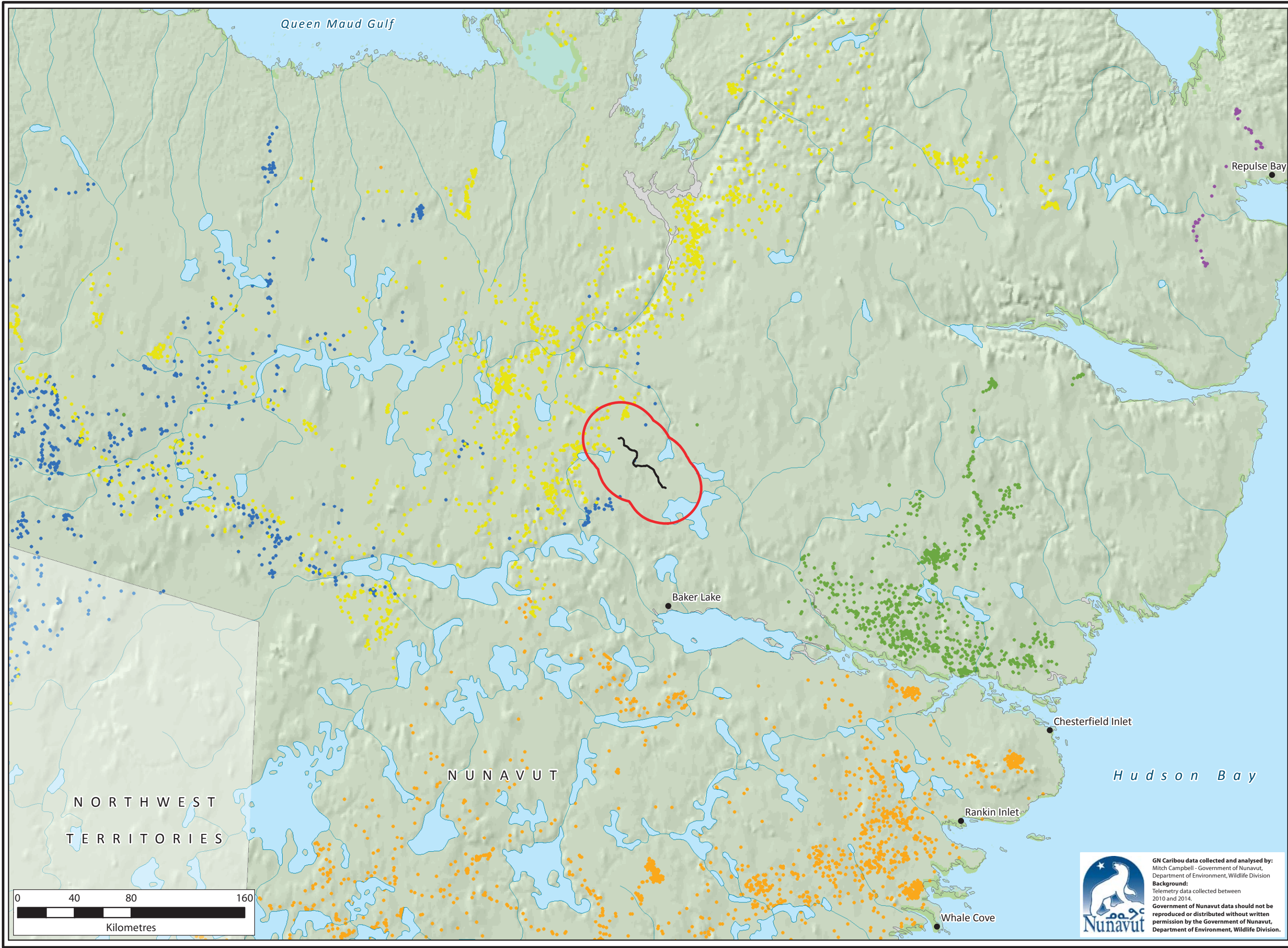
Figure:

8.4



GN Caribou data collected and analysed by:
Mitch Campbell - Government of Nunavut,
Department of Environment, Wildlife Division
Background:
Telemetry data collected between
2010 and 2014.
Government of Nunavut data should not be
reproduced or distributed without written
permission by the Government of Nunavut,
Department of Environment, Wildlife Division.

The information displayed on this map has been compiled from various sources. While every effort has been made to accurately depict the information, this map should not be relied on as being a precise indicator of locations, features, or roads, nor as a guide to navigation. MNR data provided by Queen's Printer of Ontario. Use of the data in any derivative product does not constitute an endorsement by the MNR or the Ontario Government of such products.



Legend

— Proposed Road

□ RSA Boundary

Telemetry Location by Herd

- Ahiak
- Beverly
- Lorillard
- Qamanirjuaq
- Wager Bay

Amaruq Exploration Road
Summer Dispersal
Caribou Collaring Data
(August 1 - September 15)



77 Wyndham Street South • Guelph ON N1E 5R3
T 519.822.1609 • F 519.822.5389 • www.dougan.ca

PROJECT: DA14-053-01

CLIENT: Agnico Eagle Mines Limited

	DATE: NOVEMBER 2014
	SCALE: 1:2,500,000
	DRAWN BY: Caslys
	CHECKED BY:

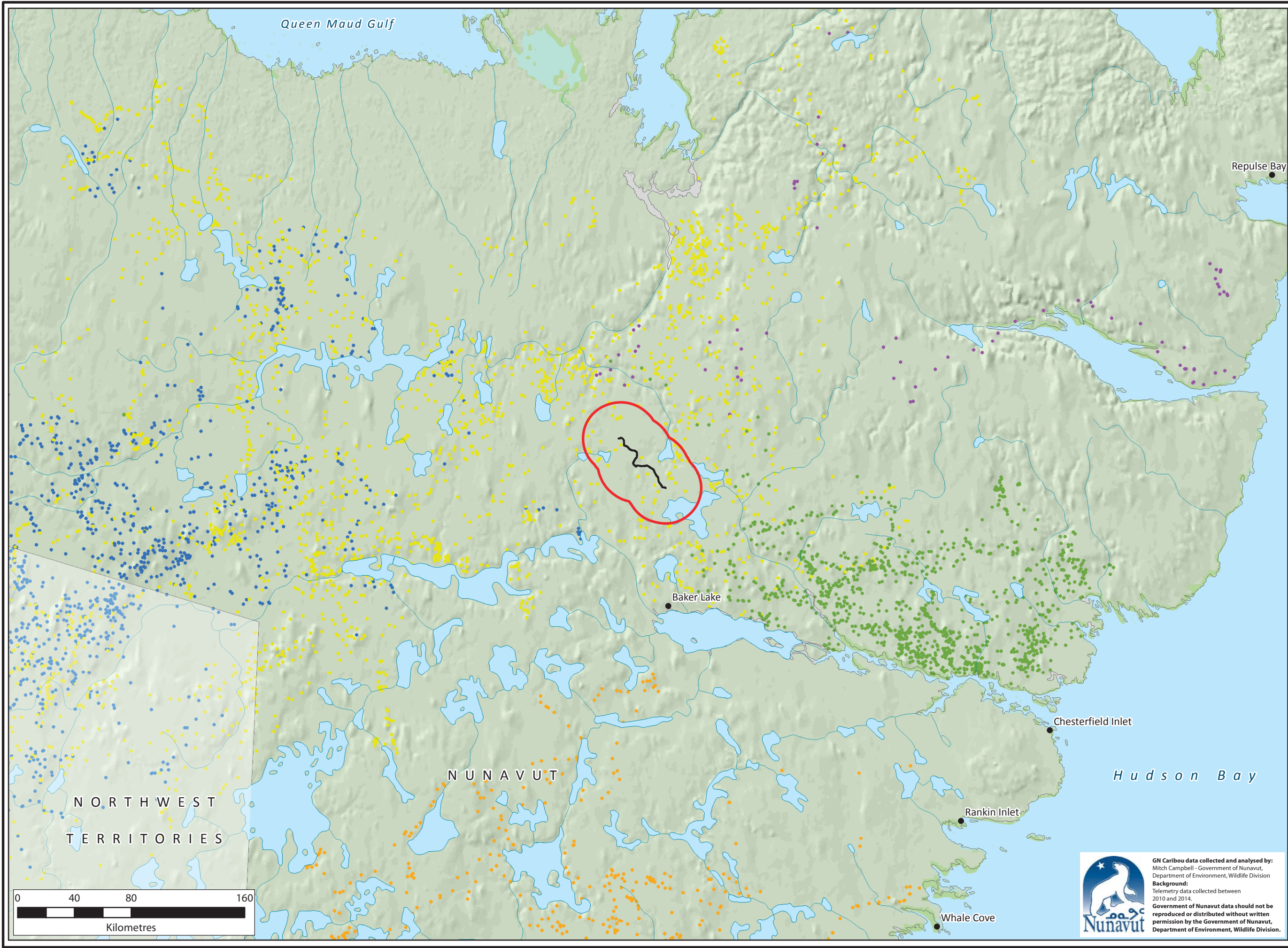
Figure:

8.5



GN Caribou data collected and analysed by:
Mitch Campbell - Government of Nunavut,
Department of Environment, Wildlife Division
Background:
Telemetry data collected between
2010 and 2014.
Government of Nunavut data should not be
reproduced or distributed without written
permission by the Government of Nunavut,
Department of Environment, Wildlife Division.

The information displayed on this map has been compiled from various sources. While every effort has been made to accurately depict the information, this map should not be relied on as being a precise indicator of locations, features, or roads, nor as a guide to navigation. MNR data provided by Queen's Printer of Ontario. Use of the data in any derivative product does not constitute an endorsement by the MNR or the Ontario Government of such products.



Legend

— Proposed Road

□ RSA Boundary

Telemetry Location by Herd

- Ahiak
- Beverly
- Lorillard
- Qamanirjuaq
- Wager Bay

Amaruq Exploration Road
Rut and Fall Migration
Caribou Collaring Data
(September 16 - November 7)



77 Wyndham Street South • Guelph ON N1E 5R3
T 519.822.1609 • F 519.822.5389 • www.dougan.ca

PROJECT: DA14-053-01

CLIENT: Agnico Eagle Mines Limited

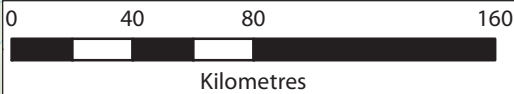
	DATE: NOVEMBER 2014
	SCALE: 1:2,500,000
	DRAWN BY: Caslys
	CHECKED BY:

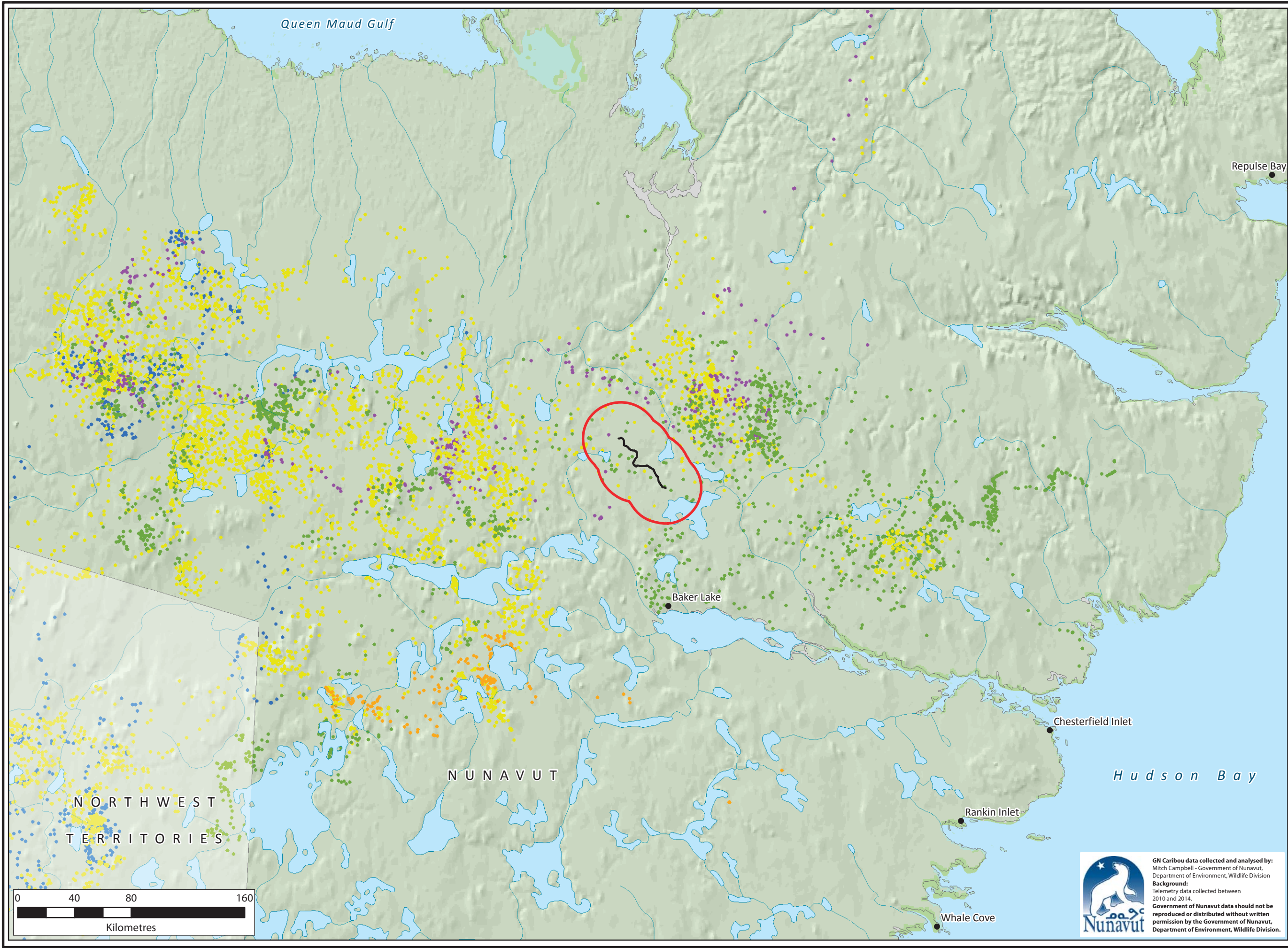
Figure:
8.6

The information displayed on this map has been compiled from various sources. While every effort has been made to accurately depict the information, this map should not be relied on as being a precise indicator of locations, features, or roads, nor as a guide to navigation. MNR data provided by Queen's Printer of Ontario. Use of the data in any derivative product does not constitute an endorsement by the MNR or the Ontario Government of such products.



GN Caribou data collected and analysed by:
Mitch Campbell - Government of Nunavut,
Department of Environment, Wildlife Division
Background:
Telemetry data collected between
2010 and 2014.
Government of Nunavut data should not be
reproduced or distributed without written
permission by the Government of Nunavut,
Department of Environment, Wildlife Division.





Legend

— Proposed Road

□ RSA Boundary

Telemetry Location by Herd

- Ahiak
- Beverly
- Lorillard
- Qamanirjuaq
- Wager Bay

Amaruq Exploration Road
Early and Late Winter
Caribou Collaring Data
(November 8 - March 31)



77 Wyndham Street South • Guelph ON N1E 5R3
T 519.822.1609 • F 519.822.5389 • www.dougan.ca

PROJECT: DA14-053-01

CLIENT: Agnico Eagle Mines Limited

	DATE: NOVEMBER 2014
	SCALE: 1:2,500,000
	DRAWN BY: Caslys
	CHECKED BY:

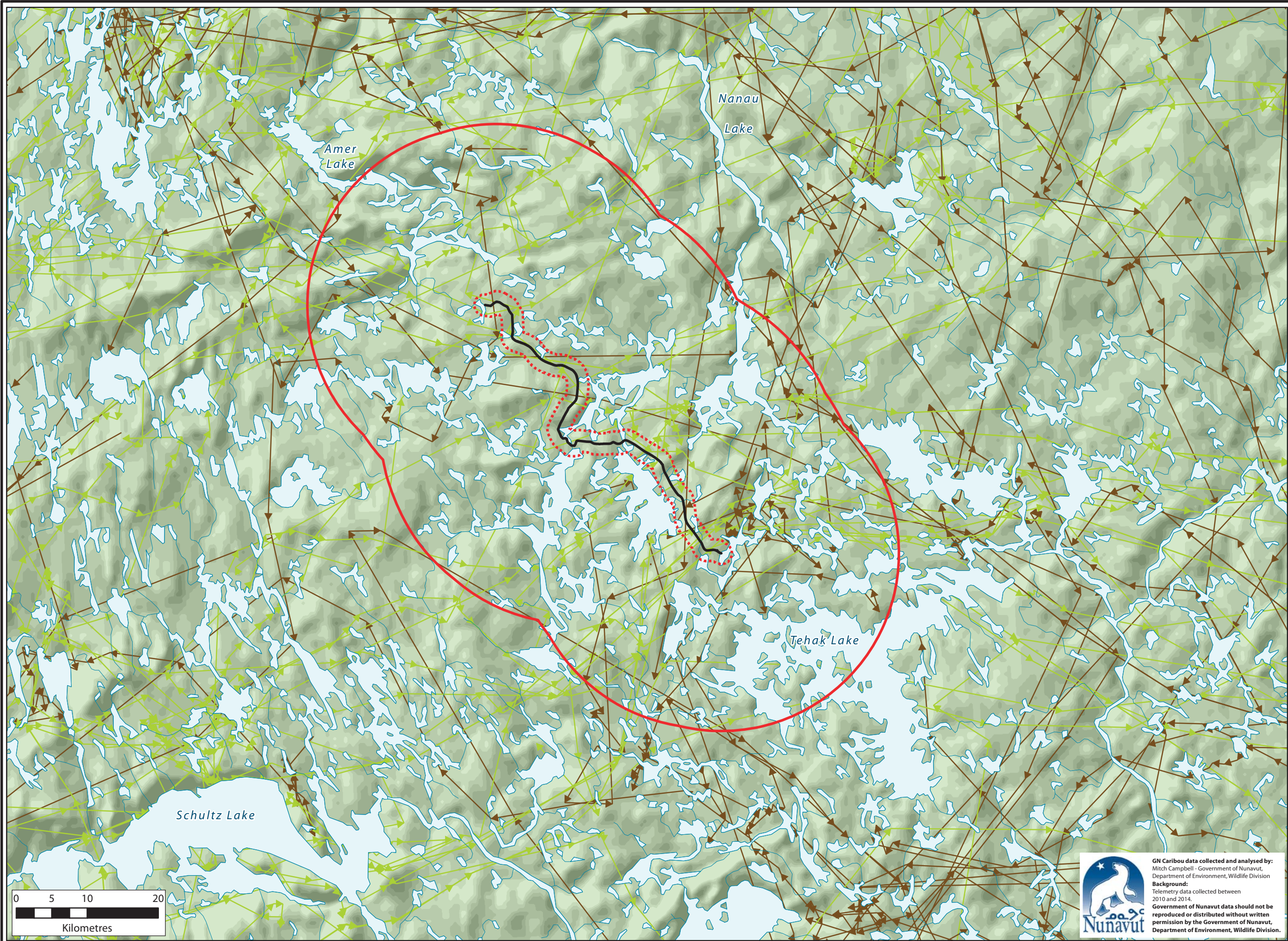
Figure:

8.7



GN Caribou data collected and analysed by:
Mitch Campbell - Government of Nunavut,
Department of Environment, Wildlife Division
Background:
Telemetry data collected between
2010 and 2014.
Government of Nunavut data should not be
reproduced or distributed without written
permission by the Government of Nunavut,
Department of Environment, Wildlife Division.

The information displayed on this map has been compiled from various sources. While every effort has been made to accurately depict the information, this map should not be relied on as being a precise indicator of locations, features, or roads, nor as a guide to navigation. MNR data provided by Queen's Printer of Ontario. Use of the data in any derivative product does not constitute an endorsement by the MNR or the Ontario Government of such products.



Legend

- Proposed Road
- RSA Boundary
- LSA Boundary
- Walk Lines by Season**
- Spring
- Fall and Rut

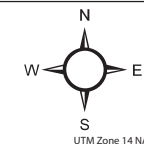
**Amaruq Exploration Road
Caribou Collaring Movements**



77 Wyndham Street South • Guelph, ON N1E 5R3
T: 519.822.1609 • F: 519.822.5389 • www.dougan.ca

PROJECT: DA14-053-01

CLIENT: Agnico Eagle Mines Limited



DATE: NOVEMBER 2014

SCALE: 1:500,000

DRAWN BY: Caslys

CHECKED BY:

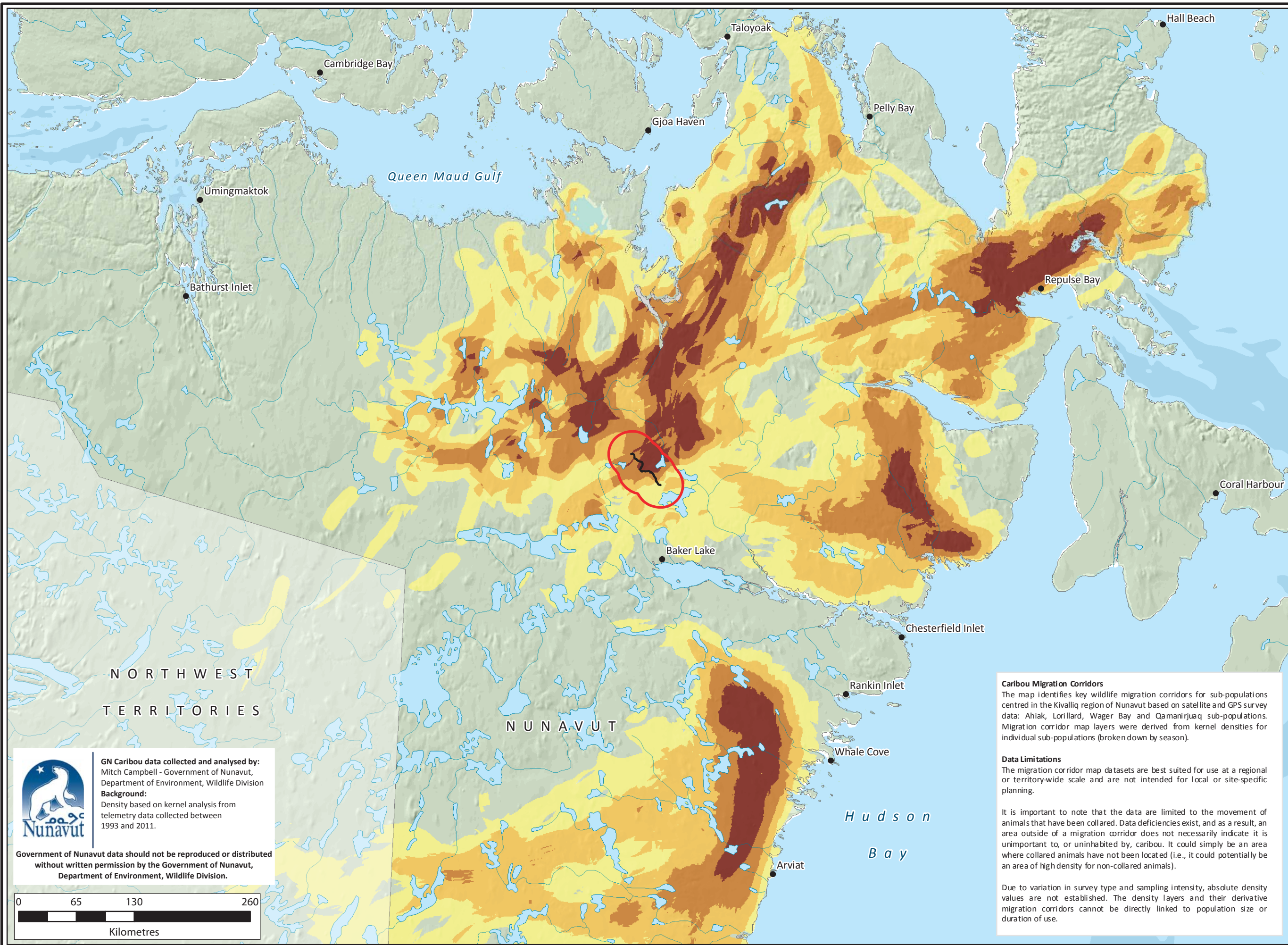
Figure:

8.8



GN Caribou data collected and analysed by:
Mitch Campbell - Government of Nunavut,
Department of Environment, Wildlife Division
Background:
Telemetry data collected between
2010 and 2014.
**Government of Nunavut data should not be
reproduced or distributed without written
permission by the Government of Nunavut,
Department of Environment, Wildlife Division.**

The information displayed on this map has been compiled from various sources. While every effort has been made to accurately depict the information, this map should not be relied on as being a precise indicator of locations, features, or roads, nor as a guide to navigation. MNR data provided by Queen's Printer of Ontario. Use of the data in any derivative product does not constitute an endorsement by the MNR or the Ontario Government of such products.



Legend
— Proposed Road
□ RSA Boundary
Spring Migration Corridor
Based on Caribou Telemetry Data*

Increasing use

* Campbell, M. W., J.G. Shaw, C.A. Blyth. 2012. Kivalliq Ecological Land Classification Map Atlas: A Wildlife Perspective. Government of Nunavut, Department of Environment. Technical Report Series #1-2012. 274 pp.

**Amaruq Exploration Road
Government of Nunavut
Spring Migration Corridors
(April - June)**

DOUGAN & ASSOCIATES
ECOLOGICAL CONSULTING & DESIGN
77 Wyndham Street South • Guelph ON N1E 5R3
T 519.822.1609 • F 519.822.5389 • www.dougan.ca

PROJECT: DA14-053-01

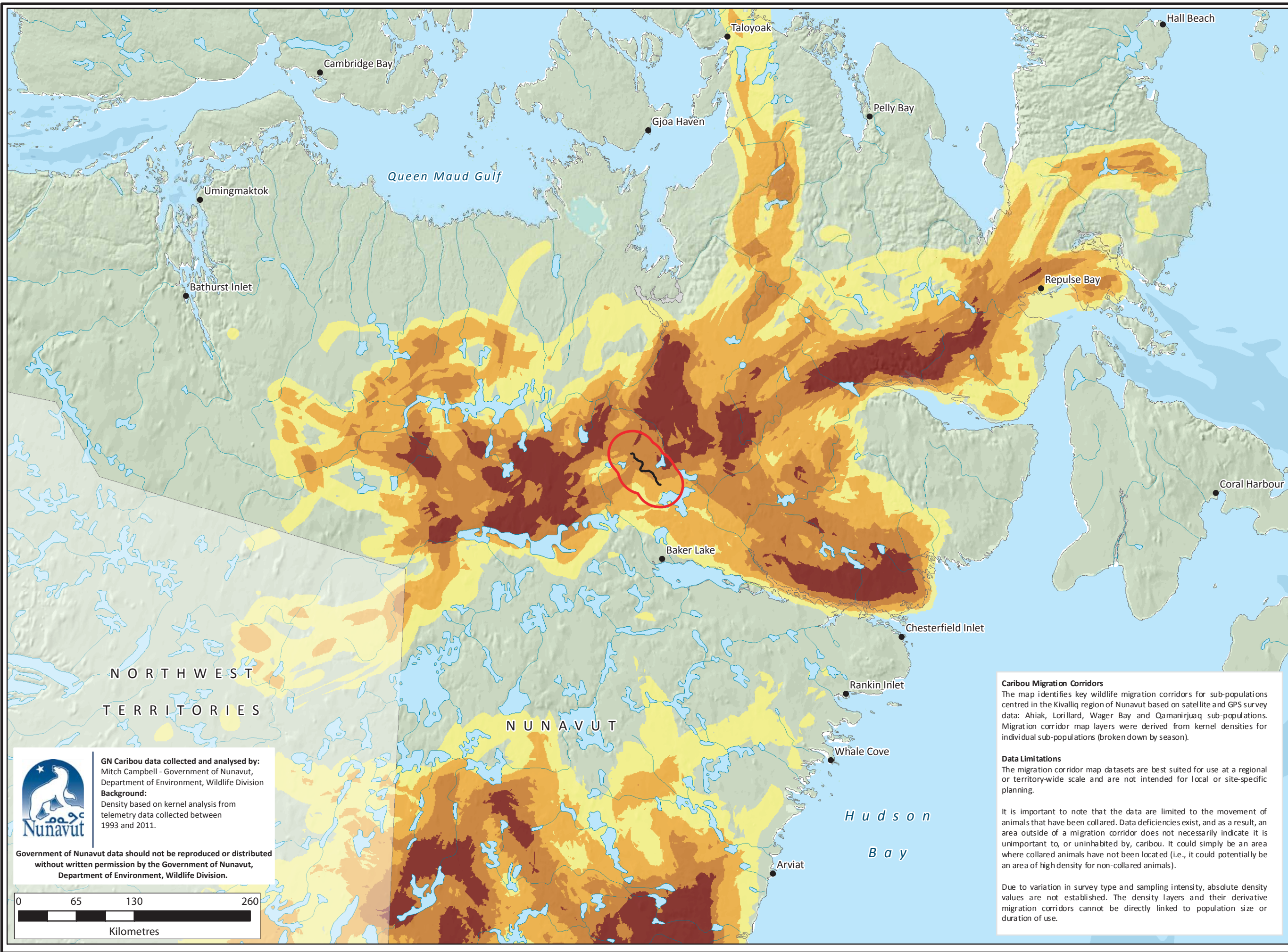
CLIENT: Agnico Eagle Mines Limited

UTM Zone 14 NAD83

DATE: NOVEMBER 2014
SCALE: 1:4,000,000
DRAWN BY: Caslys
CHECKED BY:

Figure:
8.9

The information displayed on this map has been compiled from various sources. While every effort has been made to accurately depict the information, this map should not be relied on as being a precise indicator of locations, features, or roads, nor as a guide to navigation. MNR data provided by Queen's Printer of Ontario. Use of the data in any derivative product does not constitute an endorsement by the MNR or the Ontario Government of such products.



Legend
— Proposed Road
□ RSA Boundary
Fall Migration Corridor
Based on Caribou Telemetry Data*

Increasing use

* Campbell, M. W., J.G. Shaw, C.A. Blyth. 2012. Kivalliq Ecological Land Classification Map Atlas: A Wildlife Perspective. Government of Nunavut, Department of Environment. Technical Report Series #1-2012. 274 pp.

**Amaruq Exploration Road
Government of Nunavut
Fall Migration Corridors
(September - November)**

DOUGAN & ASSOCIATES
ECOLOGICAL CONSULTING & DESIGN
77 Wyndham Street South • Guelph ON N1E 5R3
T 519.822.1609 • F 519.822.5389 • www.dougan.ca

PROJECT: DA14-053-01

CLIENT: Agnico Eagle Mines Limited

UTM Zone 14 NAD83

DATE: NOVEMBER 2014

SCALE: 1:4,000,000

DRAWN BY: Caslys

CHECKED BY:

Figure: 8.10

The information displayed on this map has been compiled from various sources. While every effort has been made to accurately depict the information, this map should not be relied on as being a precise indicator of locations, features, or roads, nor as a guide to navigation. MNR data provided by Queen's Printer of Ontario. Use of the data in any derivative product does not constitute an endorsement by the MNR or the Ontario Government of such products.