

Legend

- 2014 Vegetation Survey Plot Locations
- Proposed Road
- LSA Boundary
- RSA Boundary

**Amaruq Exploration Road
Baseline Vegetation
Plot Locations**

 **DOUGAN & ASSOCIATES**
ECOLOGICAL CONSULTING & DESIGN
77 Wynshaw Street South • Guelph, ON N1T 5B7
T 519.822.1609 • F 519.822.5389 • www.dougan.ca

PROJECT: DA14-053-01

CLIENT: Agnico Eagle Mines Limited

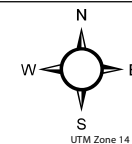
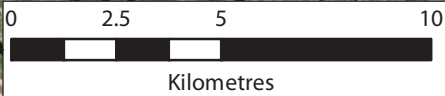
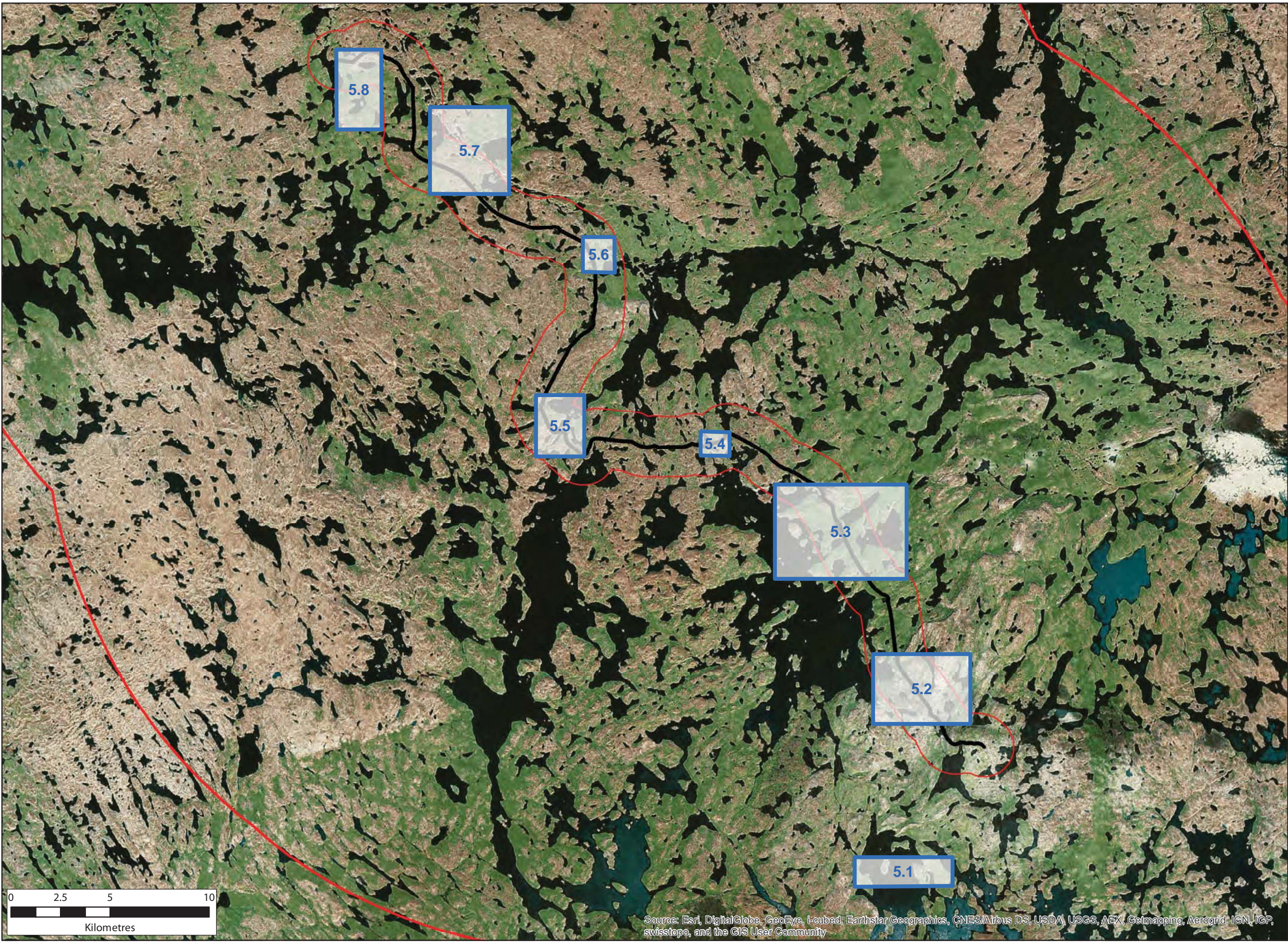
	DATE: DECEMBER 2014
	SCALE: 1:150,000
	DRAWN BY: LW
	CHECKED BY: MAY

Figure:
4

The information displayed on this map has been compiled from various sources. While every effort has been made to accurately depict the information, this map should not be relied on as being a precise indicator of locations, features, or roads, nor as a guide to navigation. MNR data provided by Queen's Printer of Ontario. Use of the data in any derivative product does not constitute an endorsement by the MNR or the Ontario Government of such products.

Source: Esri, DigitalGlobe, GeoEye, i-cubed, Earthstar Geographics, CNES/Airbus DS, USDA, USGS, AEX, Getmapping, Aerogrid, IGN, IGP, swisstopo, and the GIS User Community



Source: Esri, DigitalGlobe, GeoEye, i-cubed, Earthstar Geographics, CNES/Airbus DS, USDA, USGS, AEX, Getmapping, Aerogrid, IGN, IGP, swisstopo, and the GIS User Community

- Wildlife Observation Map ID
- Proposed Road
- LSA Boundary
- RSA Boundary

Amaruq Exploration Road



77 Wyndham Street South • Guelph ON N1H 5B7
T 519.822.1609 • F 519.822.3389 • www.dougan.ca

PROJECT: DA14-053-01

CLIENT: Agnico Eagle Mines Limited

	DATE: DECEMBER 2014
	SCALE: 1:180,000
	DRAWN BY: LW
	CHECKED BY: MAY

Figure:
5.0

The information displayed on this map has been compiled from various sources. While every effort has been made to accurately depict the information, this map should not be relied on as being a precise indicator of locations, features, or roads, nor as a guide to navigation. MNR data provided by Queen's Printer of Ontario. Use of the data in any derivative product does not constitute an endorsement by the MNR or the Ontario Government of such products.



Species	Code
American Pipit	AMPI
Arctic Fox	ARFO
Arctic Ground Squirrel	AGSQ
Arctic Hare	ARHA
Arctic Wolf	ARWO
Barren-ground Caribou	BGCA
Cackling Goose	CACG
Canada Goose	CANG
Common Loon	COLO
Common Raven	CORA
Duck sp	DUCK
Ermine	ERMI
Goose sp	GOOS
Greater White-fronted Goose	GWFG
Grizzly Bear	GRBR
Gull sp	GULL
Gyr Falcon	GYRF
Herring Gull	HERG
Horned Lark	HOLA
Lapland Longspur	LALO
Muskox	MUOX
Nearctic Brown Lemming	NBLE
Peregrine Falcon	PEFA
Ptarmigan sp	PTAR
Raptor sp	RAPT
Rock Ptarmigan	ROPT
Roughed Leg Hawk	RLHA
Sandhill Crane	SACR
Savannah Sparrow	SAVS
Shorebird sp	SHOR
Small Mammal sp	MAMM
Snow Bunting	SNBU
Snow Goose	SNGO

Legend

Wildlife Observations

+

September - Antlers

●

September - Observed

▲

September - Scat

★

September - Skull

●

August - Observed

◆

August - Root Dig

▲

August - Scat

■

August - Trails

●

October - Observed

■

October - Trails

Amaruq Exploration Camp

● Wildlife Observations (see Appendix 7)

— Proposed Road

□

LSA Boundary

□

RSA Boundary

Amaruq Exploration Road
Wildlife Observations



77 Wyndham Street South • Guelph, ON N1H 5B7
T: 519.822.1609 • F: 519.822.3389 • www.dougan.ca

PROJECT: DA14-053-01

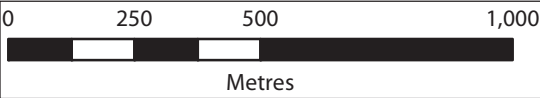
CLIENT: Agnico Eagle Mines Limited

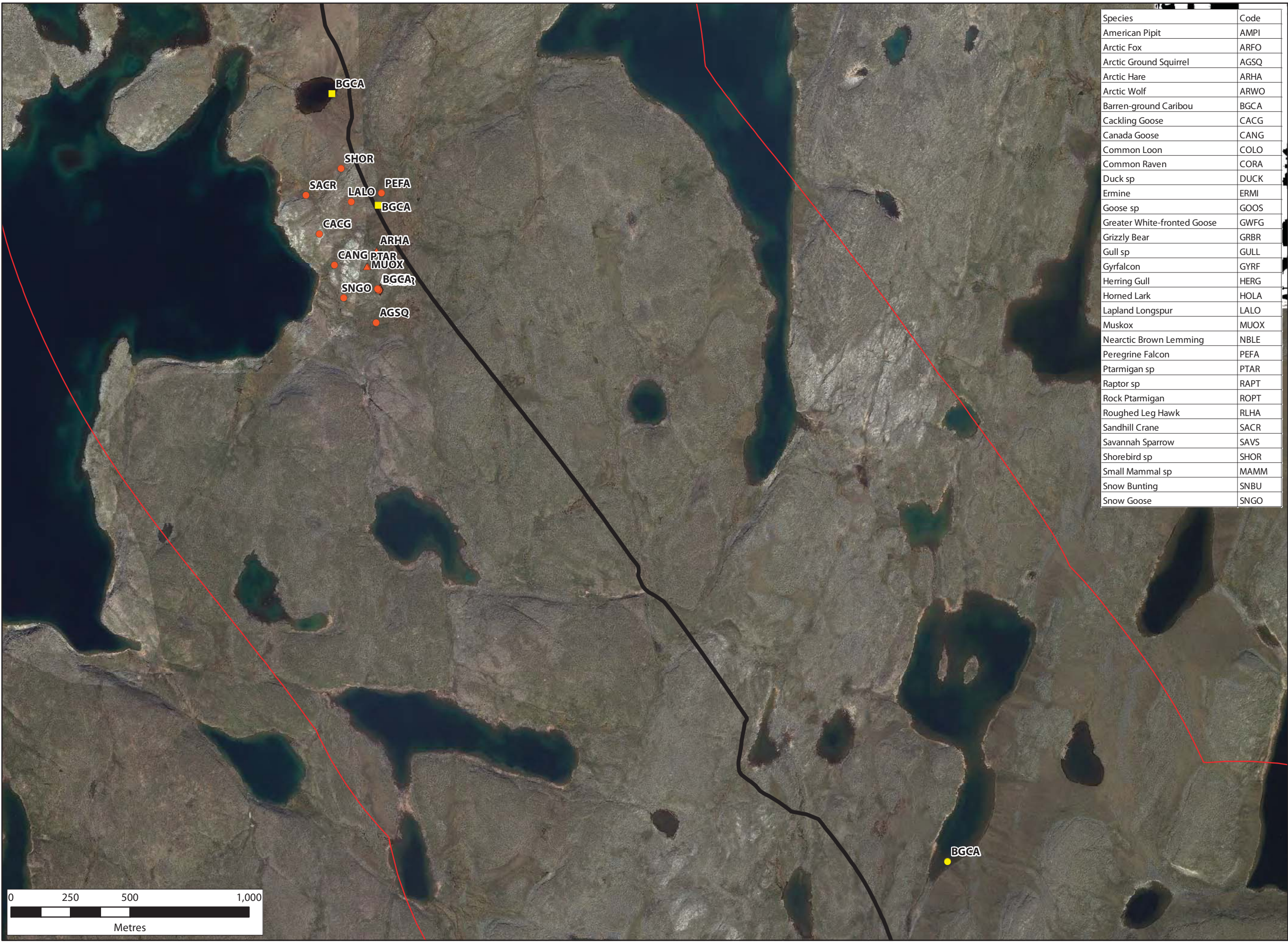
	DATE: DECEMBER 2014
	SCALE: 1:15,000
	DRAWN BY: LW
	CHECKED BY: MAY

Figure:

5.1

The information displayed on this map has been compiled from various sources. While every effort has been made to accurately depict the information, this map should not be relied on as being a precise indicator of locations, features, or roads, nor as a guide to navigation. MNR data provided by Queen's Printer of Ontario. Use of the data in any derivative product does not constitute an endorsement by the MNR or the Ontario Government of such products.





Species	Code
American Pipit	AMPI
Arctic Fox	ARFO
Arctic Ground Squirrel	AGSQ
Arctic Hare	ARHA
Arctic Wolf	ARWO
Barren-ground Caribou	BGCA
Cackling Goose	CACG
Canada Goose	CANG
Common Loon	COLO
Common Raven	CORA
Duck sp	DUCK
Ermine	ERMI
Goose sp	GOOS
Greater White-fronted Goose	GWFG
Grizzly Bear	GRBR
Gull sp	GULL
Gyr Falcon	GYRF
Herring Gull	HERG
Horned Lark	HOLA
Lapland Longspur	LALO
Muskox	MUOX
Nearctic Brown Lemming	NBLE
Peregrine Falcon	PEFA
Ptarmigan sp	PTAR
Raptor sp	RAPT
Rock Ptarmigan	ROPT
Roughed Leg Hawk	RLHA
Sandhill Crane	SACR
Savannah Sparrow	SAVS
Shorebird sp	SHOR
Small Mammal sp	MAMM
Snow Bunting	SNBU
Snow Goose	SNGO

Legend

Wildlife Observations

+

September - Antlers

●

September - Observed

▲

September - Scat

★

September - Skull

●

August - Observed

◆

August - Root Dig

▲

August - Scat

■

August - Trails

●

October - Observed

■

October - Trails

Amaruq Exploration Camp

● Wildlife Observations (see Appendix 7)

— Proposed Road

□

LSA Boundary

□

RSA Boundary

Amaruq Exploration Road
Wildlife Observations



77 Wyndham Street South • Guelph ON N1W 5B7
T 519.822.1609 • F 519.822.5389 • www.dougan.ca

PROJECT: DA14-053-01

CLIENT: Agnico Eagle Mines Limited

	DATE: DECEMBER 2014
	SCALE: 1:15,000
	DRAWN BY: LW
	CHECKED BY: MAY

Figure:

5.2

The information displayed on this map has been compiled from various sources. While every effort has been made to accurately depict the information, this map should not be relied on as being a precise indicator of locations, features, or roads, nor as a guide to navigation. MNR data provided by Queen's Printer of Ontario. Use of the data in any derivative product does not constitute an endorsement by the MNR or the Ontario Government of such products.



Species	Code
American Pipit	AMPI
Arctic Fox	ARFO
Arctic Ground Squirrel	AGSQ
Arctic Hare	ARHA
Arctic Wolf	ARWO
Barren-ground Caribou	BGCA
Cackling Goose	CACG
Canada Goose	CANG
Common Loon	COLO
Common Raven	CORA
Duck sp	DUCK
Ermine	ERMI
Goose sp	GOOS
Greater White-fronted Goose	GWFG
Grizzly Bear	GRBR
Gull sp	GULL
Gyrfalcon	GYRF
Herring Gull	HERG
Horned Lark	HOLA
Lapland Longspur	LALO
Muskox	MUOX
Nearctic Brown Lemming	NBLE
Peregrine Falcon	PEFA
Ptarmigan sp	PTAR
Raptor sp	RAPT
Rock Ptarmigan	ROPT
Roughed Leg Hawk	RLHA
Sandhill Crane	SACR
Savannah Sparrow	SAVS
Shorebird sp	SHOR
Small Mammal sp	MAMM
Snow Bunting	SNBU
Snow Goose	SNGO

Legend

Wildlife Observations

+

September - Antlers

●

September - Observed

▲

September - Scat

★

September - Skull

●

August - Observed

◆

August - Root Dig

▲

August - Scat

■

August - Trails

●

October - Observed

■

October - Trails

Amaruq Exploration Camp

● Wildlife Observations (see Appendix 7)

— Proposed Road

□

LSA Boundary

□

RSA Boundary

Amaruq Exploration Road
Wildlife Observations



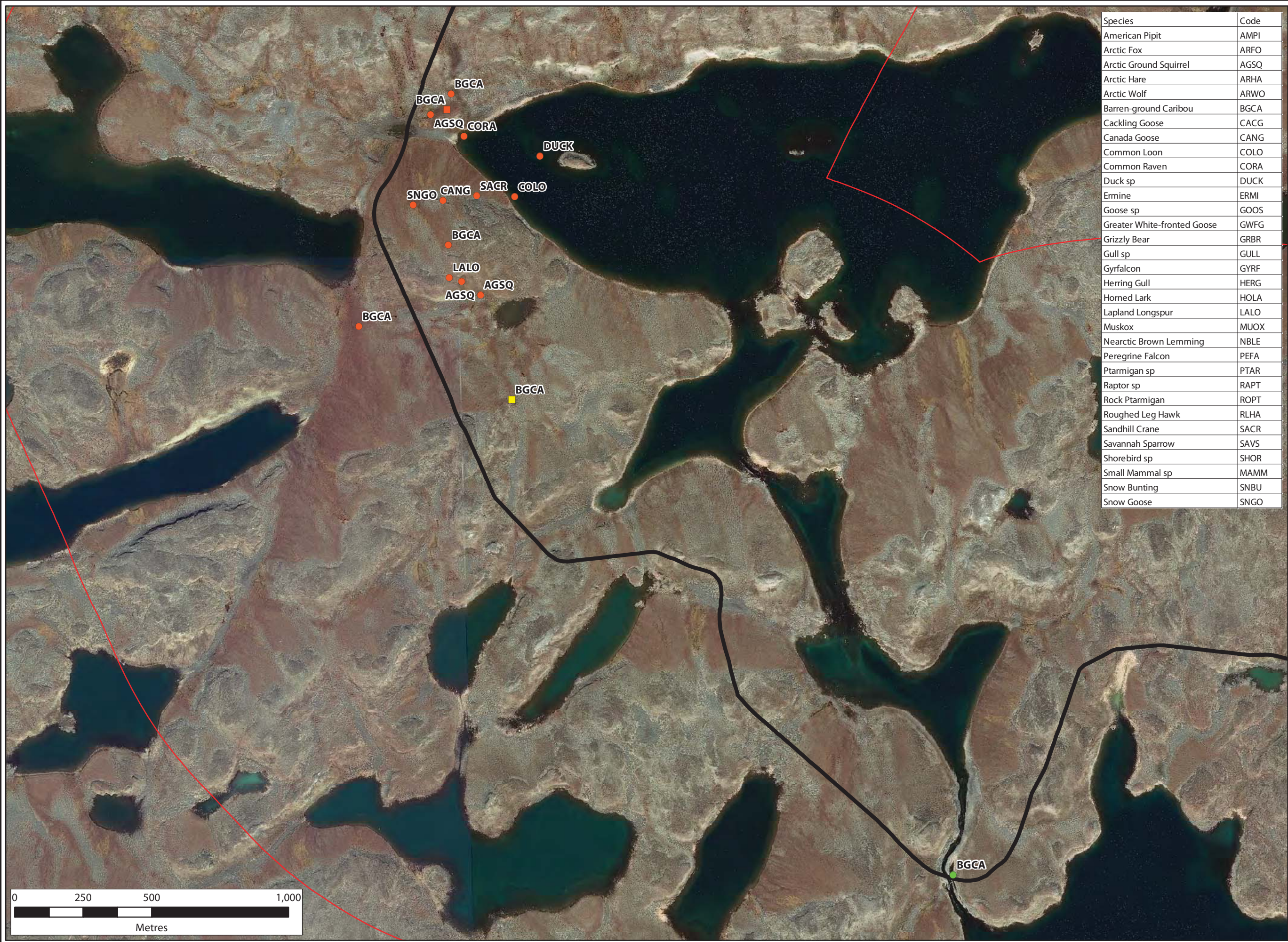
PROJECT: DA14-053-01

CLIENT: Agnico Eagle Mines Limited

	DATE: DECEMBER 2014
	SCALE: 1:20,000
	DRAWN BY: LW
	CHECKED BY: MAY

Figure:
5.3

The information displayed on this map has been compiled from various sources. While every effort has been made to accurately depict the information, this map should not be relied on as being a precise indicator of locations, features, or roads, nor as a guide to navigation. MNR data provided by Queen's Printer of Ontario. Use of the data in any derivative product does not constitute an endorsement by the MNR or the Ontario Government of such products.



Species	Code
American Pipit	AMPI
Arctic Fox	ARFO
Arctic Ground Squirrel	AGSQ
Arctic Hare	ARHA
Arctic Wolf	ARWO
Barren-ground Caribou	BGCA
Cackling Goose	CACG
Canada Goose	CANG
Common Loon	COLO
Common Raven	CORA
Duck sp	DUCK
Ermine	ERMI
Goose sp	GOOS
Greater White-fronted Goose	GWFG
Grizzly Bear	GRBR
Gull sp	GULL
Gyr Falcon	GYRF
Herring Gull	HERG
Horned Lark	HOLA
Lapland Longspur	LALO
Muskox	MUOX
Nearctic Brown Lemming	NBLE
Peregrine Falcon	PEFA
Ptarmigan sp	PTAR
Raptor sp	RAPT
Rock Ptarmigan	ROPT
Roughed Leg Hawk	RLHA
Sandhill Crane	SACR
Savannah Sparrow	SAVS
Shorebird sp	SHOR
Small Mammal sp	MAMM
Snow Bunting	SNBU
Snow Goose	SNGO

Legend

Wildlife Observations

+

September - Antlers

●

September - Observed

▲

September - Scat

★

September - Skull

●

August - Observed

◆

August - Root Dig

▲

August - Scat

■

August - Trails

●

October - Observed

■

October - Trails

Amaruq Exploration Camp

Wildlife Observations (see Appendix 7)

—

Proposed Road

□

LSA Boundary

□

RSA Boundary

Amaruq Exploration Road
Wildlife Observations



PROJECT: DA14-053-01

CLIENT: Agnico Eagle Mines Limited

	DATE: DECEMBER 2014
	SCALE: 1:13,000
	DRAWN BY: LW
	CHECKED BY: MAY

Figure:
5.5

The information displayed on this map has been compiled from various sources. While every effort has been made to accurately depict the information, this map should not be relied on as being a precise indicator of locations, features, or roads, nor as a guide to navigation. MNR data provided by Queen's Printer of Ontario. Use of the data in any derivative product does not constitute an endorsement by the MNR or the Ontario Government of such products.



Species	Code
American Pipit	AMPI
Arctic Fox	ARFO
Arctic Ground Squirrel	AGSQ
Arctic Hare	ARHA
Arctic Wolf	ARWO
Barren-ground Caribou	BGCA
Cackling Goose	CACG
Canada Goose	CANG
Common Loon	COLO
Common Raven	CORA
Duck sp	DUCK
Ermine	ERMI
Goose sp	GOOS
Greater White-fronted Goose	GWFG
Grizzly Bear	GRBR
Gull sp	GULL
Gyr Falcon	GYRF
Herring Gull	HERG
Horned Lark	HOLA
Lapland Longspur	LALO
Muskox	MUOX
Nearctic Brown Lemming	NBLE
Peregrine Falcon	PEFA
Ptarmigan sp	PTAR
Raptor sp	RAPT
Rock Ptarmigan	ROPT
Roughed Leg Hawk	RLHA
Sandhill Crane	SACR
Savannah Sparrow	SAVS
Shorebird sp	SHOR
Small Mammal sp	MAMM
Snow Bunting	SNBU
Snow Goose	SNGO

Legend

Wildlife Observations

+

September - Antlers

●

September - Observed

▲

September - Scat

★

September - Skull

●

August - Observed

◆

August - Root Dig

▲

August - Scat

■

August - Trails

●

October - Observed

■

October - Trails

●

Amaruq Exploration Camp

●

Wildlife Observations (see Appendix 7)

Proposed Road

LSA Boundary

RSA Boundary

Amaruq Exploration Road
Wildlife Observations




**DOUGAN
& ASSOCIATES**
ECOLOGICAL CONSULTING & DESIGN

77 Wyndham Street South • Guelph, ON N1H 5R7
T 519.822.1609 • F 519.822.5389 • www.dougan.ca

PROJECT: DA14-053-01

CLIENT: Agnico Eagle Mines Limited



UTM Zone 14 NAD83

DATE: DECEMBER 2014

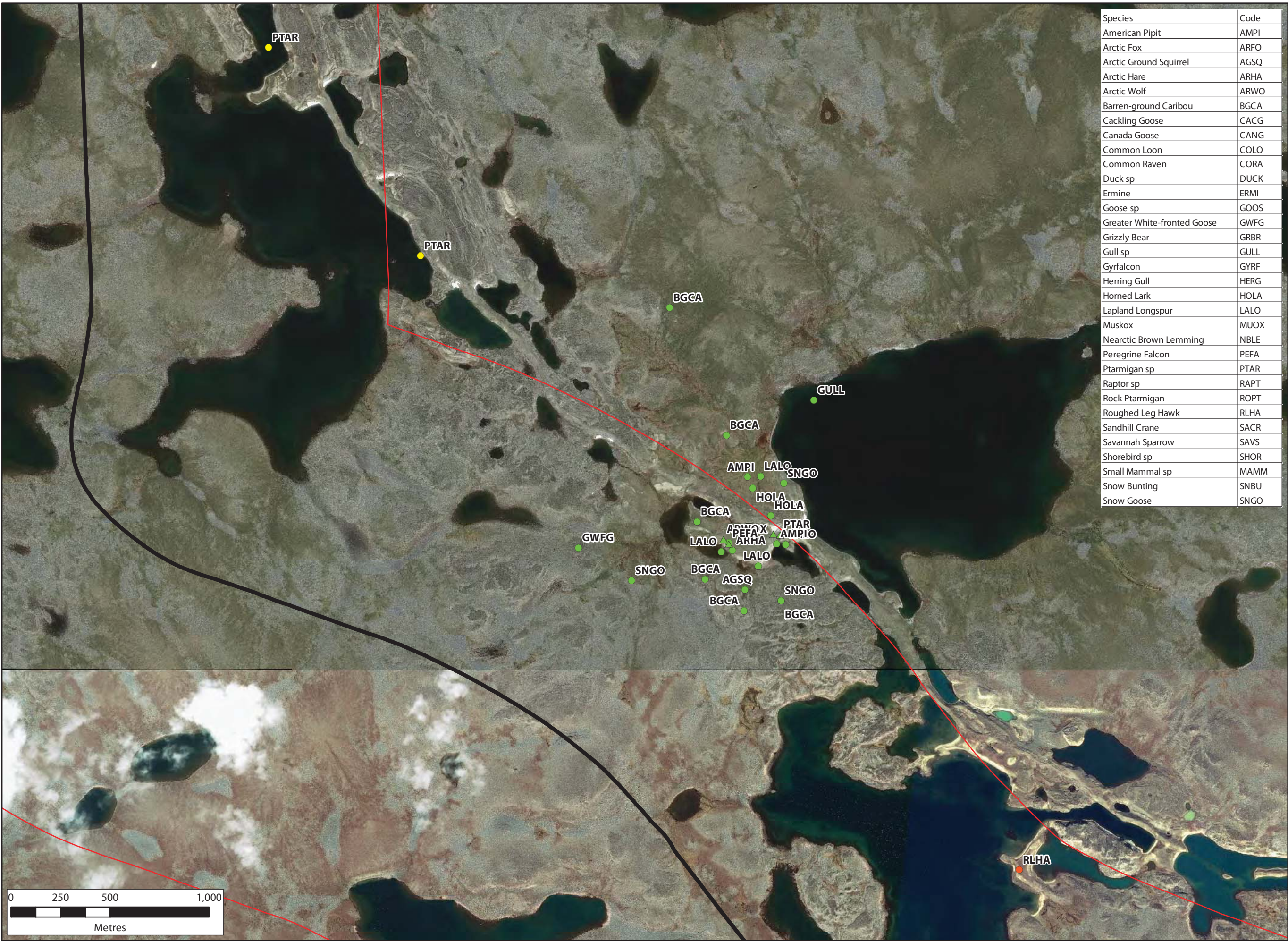
SCALE: 1:8,000

DRAWN BY: LW

CHECKED BY: MAY

Figure:
5.6

The information displayed on this map has been compiled from various sources. While every effort has been made to accurately depict the information, this map should not be relied on as being a precise indicator of locations, features, or roads, nor as a guide to navigation. MNR data provided by Queen's Printer of Ontario. Use of the data in any derivative product does not constitute an endorsement by the MNR or the Ontario Government of such products.



Species	Code
American Pipit	AMPI
Arctic Fox	ARFO
Arctic Ground Squirrel	AGSQ
Arctic Hare	ARHA
Arctic Wolf	ARWO
Barren-ground Caribou	BGCA
Cackling Goose	CACG
Canada Goose	CANG
Common Loon	COLO
Common Raven	CORA
Duck sp	DUCK
Ermine	ERMI
Goose sp	GOOS
Greater White-fronted Goose	GWFG
Grizzly Bear	GRBR
Gull sp	GULL
Gyr Falcon	GYRF
Herring Gull	HERG
Horned Lark	HOLA
Lapland Longspur	LALO
Muskox	MUOX
Nearctic Brown Lemming	NBLE
Peregrine Falcon	PEFA
Ptarmigan sp	PTAR
Raptor sp	RAPT
Rock Ptarmigan	ROPT
Roughed Leg Hawk	RLHA
Sandhill Crane	SACR
Savannah Sparrow	SAVS
Shorebird sp	SHOR
Small Mammal sp	MAMM
Snow Bunting	SNBU
Snow Goose	SNGO

Legend

Wildlife Observations

+

September - Antlers

●

September - Observed

▲

September - Scat

★

September - Skull

●

August - Observed

◆

August - Root Dig

▲

August - Scat

■

August - Trails

●

October - Observed

■

October - Trails

Amaruq Exploration Camp

● Wildlife Observations (see Appendix 7)

— Proposed Road

□

LSA Boundary

□

RSA Boundary

Amaruq Exploration Road
Wildlife Observations



DOUGAN & ASSOCIATES
ECOLOGICAL CONSULTING & DESIGN

77 Wyndham Street South • Guelph, ON N1H 5B7
T 519.822.1609 • F 519.822.5389 • www.dougan.ca

PROJECT: DA14-053-01

CLIENT: Agnico Eagle Mines Limited

N

W

E

S

UTM Zone 14 NAD83

DATE: DECEMBER 2014

SCALE: 1:18,000

DRAWN BY: LW

CHECKED BY: MAY

Figure:
5.7

The information displayed on this map has been compiled from various sources. While every effort has been made to accurately depict the information, this map should not be relied on as being a precise indicator of locations, features, or roads, nor as a guide to navigation. MNR data provided by Queen's Printer of Ontario. Use of the data in any derivative product does not constitute an endorsement by the MNR or the Ontario Government of such products.