

**Legend**

- Proposed Road
- RSA Boundary
- LSA Boundary

**Number of Trips\***

- n No Harvest Reported
- 1
- 2
- 3
- 4
- 5
- 6 - 10
- 11 - 15
- 16 - 20
- > 20

\*The number in each cell indicates the number of animals harvested. The colour of the cell indicates the number of trips to that cell.

**Amaruq Exploration Road  
Baker Lake Hunter Harvest Study  
(2007 - 2013)**



77 Wyndham Street South • Guelph ON N1E 5R3  
T 519.822.1609 • F 519.822.5389 • www.dougan.ca

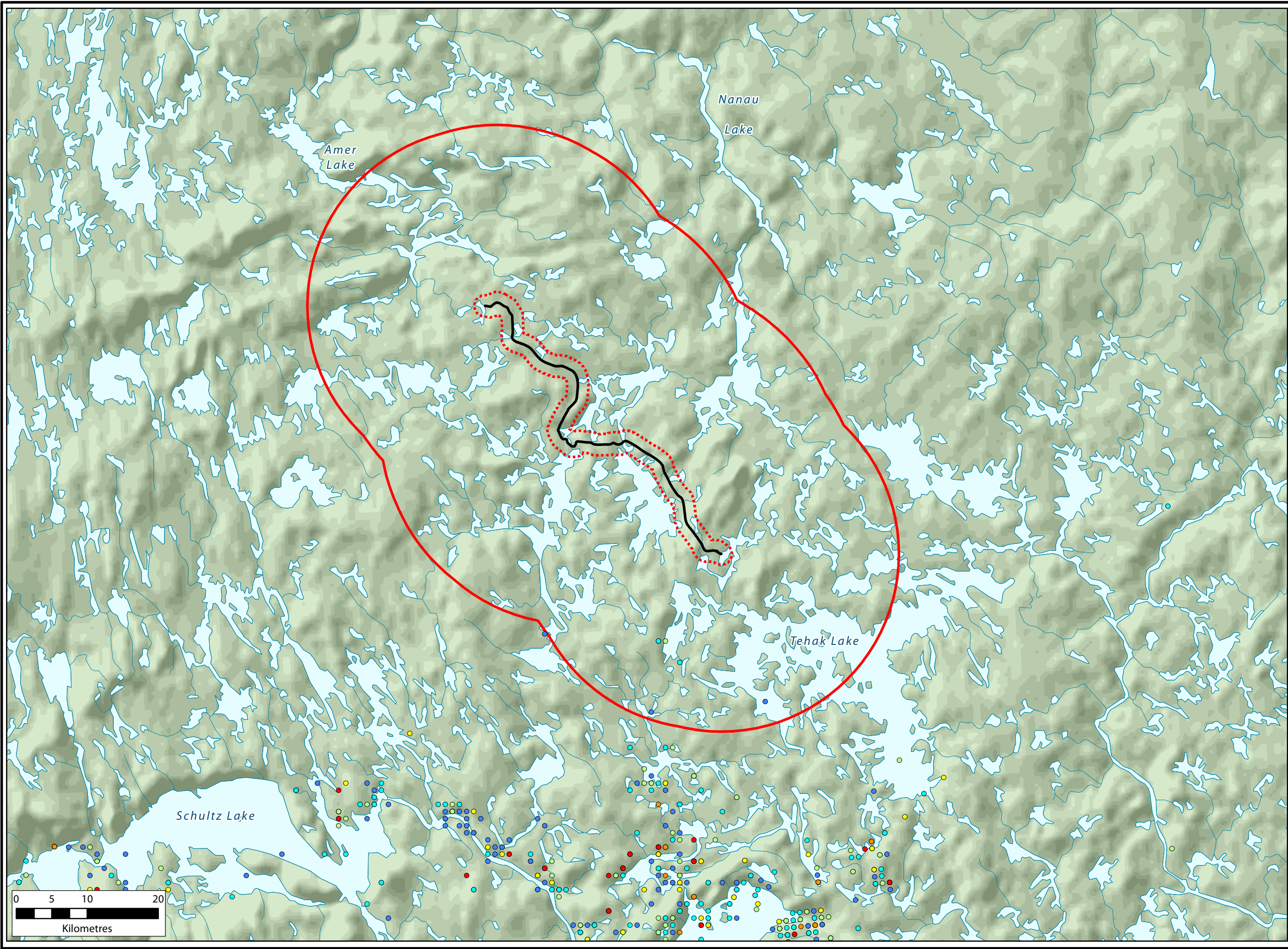
PROJECT: DA14-053-01

CLIENT: Agnico Eagle Mines Limited

	DATE: NOVEMBER 2014
	SCALE: 1:500,000
	DRAWN BY: Caslys
	CHECKED BY:

Figure:  
**6**

The information displayed on this map has been compiled from various sources. While every effort has been made to accurately depict the information, this map should not be relied on as being a precise indicator of locations, features, or roads, nor as a guide to navigation. MNR data provided by Queen's Printer of Ontario. Use of the data in any derivative product does not constitute an endorsement by the MNR or the Ontario Government of such products.



**Legend**

- Proposed Road
- RSA Boundary
- LSA Boundary

**Number of Animals Harvested\***

- 0
- 1
- 2
- 3
- 4
- 5
- >5

\* Harvest distribution data are not available for the full extent of the Regional Study Area. The results depicted are for caribou, muskox and grizzly bear.

**Amaruq Exploration Road  
Nunavut Wildlife Management  
Board (NWMB)  
Harvest Study (2005)**



77 Wyndham Street South • Guelph ON N1E 5R3  
T 519.822.1609 • F 519.822.5389 • www.dougan.ca

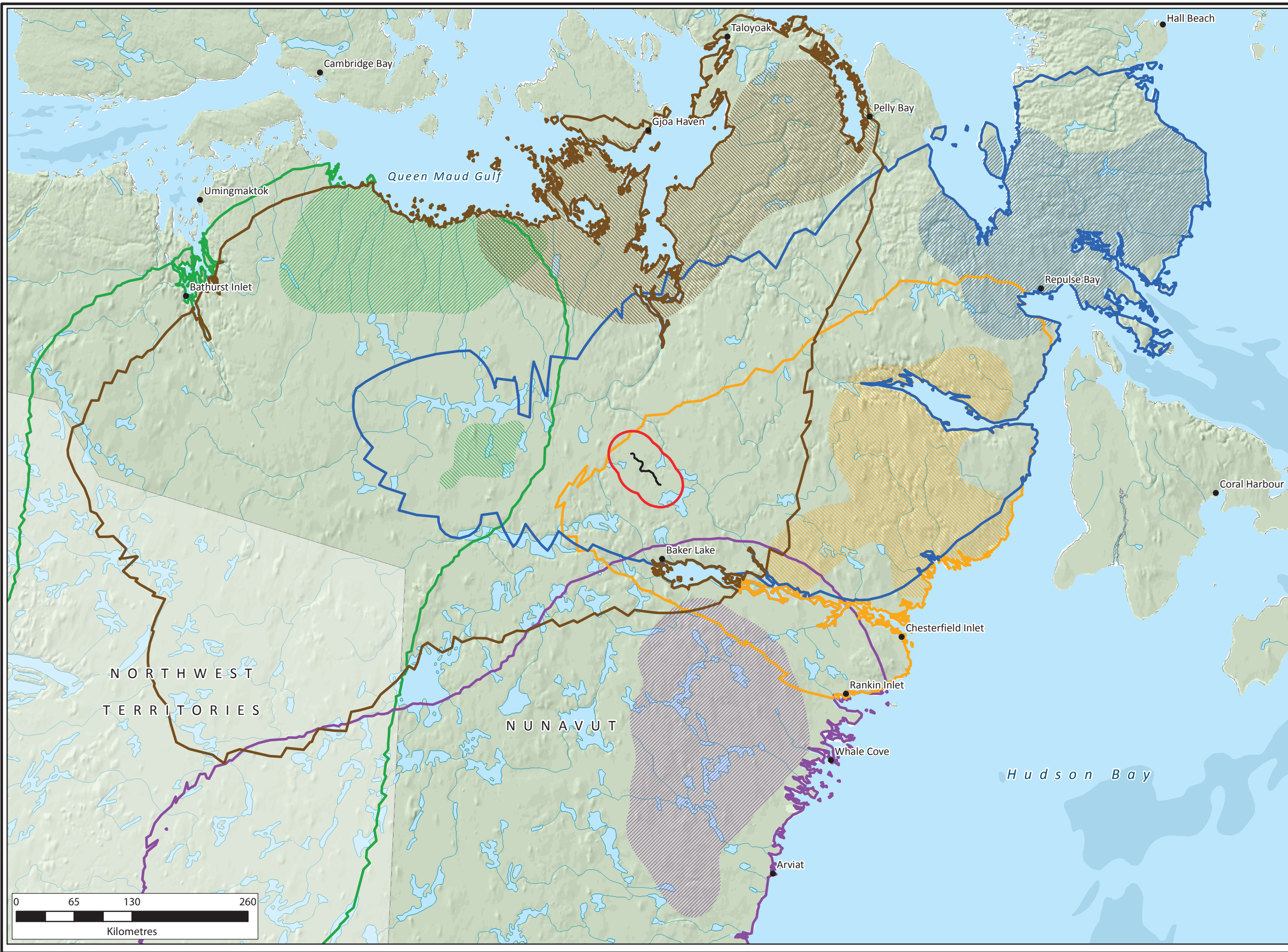
PROJECT: DA14-053-01

CLIENT: Agnico Eagle Mines Limited

	DATE: NOVEMBER 2014
	SCALE: 1:500,000
	DRAWN BY: Caslys
	CHECKED BY:

Figure:  
**7**

The information displayed on this map has been compiled from various sources. While every effort has been made to accurately depict the information, this map should not be relied on as being a precise indicator of locations, features, or roads, nor as a guide to navigation. MNR data provided by Queen's Printer of Ontario. Use of the data in any derivative product does not constitute an endorsement by the MNR or the Ontario Government of such products.



**Legend**  
— Proposed Road  
□ RSA Boundary  
**GN/GNWT Annual Home Ranges\***  
■ Ahiaik Herd  
■ Wager Bay Herd  
■ Lorillard Herd  
■ Qamanirjuaq Herd  
■ Beverly Herd  
**GN/GNWT Calving Grounds\***  
■ Ahiaik Herd  
■ Qamanirjuaq Herd  
■ Lorillard Herd  
■ Wager Bay Herd  
■ Beverly Herd - North  
■ Beverly Herd - South

\*Home ranges and calving grounds are part of a publication. The ESA citation is as follows: Nagy, J. A., D. L. Johnson, N. C. Larter, M. W. Campbell, A. E. Derocher, A. Kelly, M. Dumond, D. Allaire, and B. Croft. 2011. Subpopulation structure of caribou (Rangifer tarandus L.) in arctic and subarctic Canada. Ecological Applications [doi:10.1890/10-1410.1].

**Amaruq Exploration Road  
Caribou Calving Areas**



77 Wyndham Street South • Guelph, ON N1E 5R3  
T: 519.822.1609 • F: 519.822.5389 • www.dougan.ca

PROJECT: DA14-053-01

CLIENT: Agnico Eagle Mines Limited



UTM Zone 14 NAD83

DATE: NOVEMBER 2014

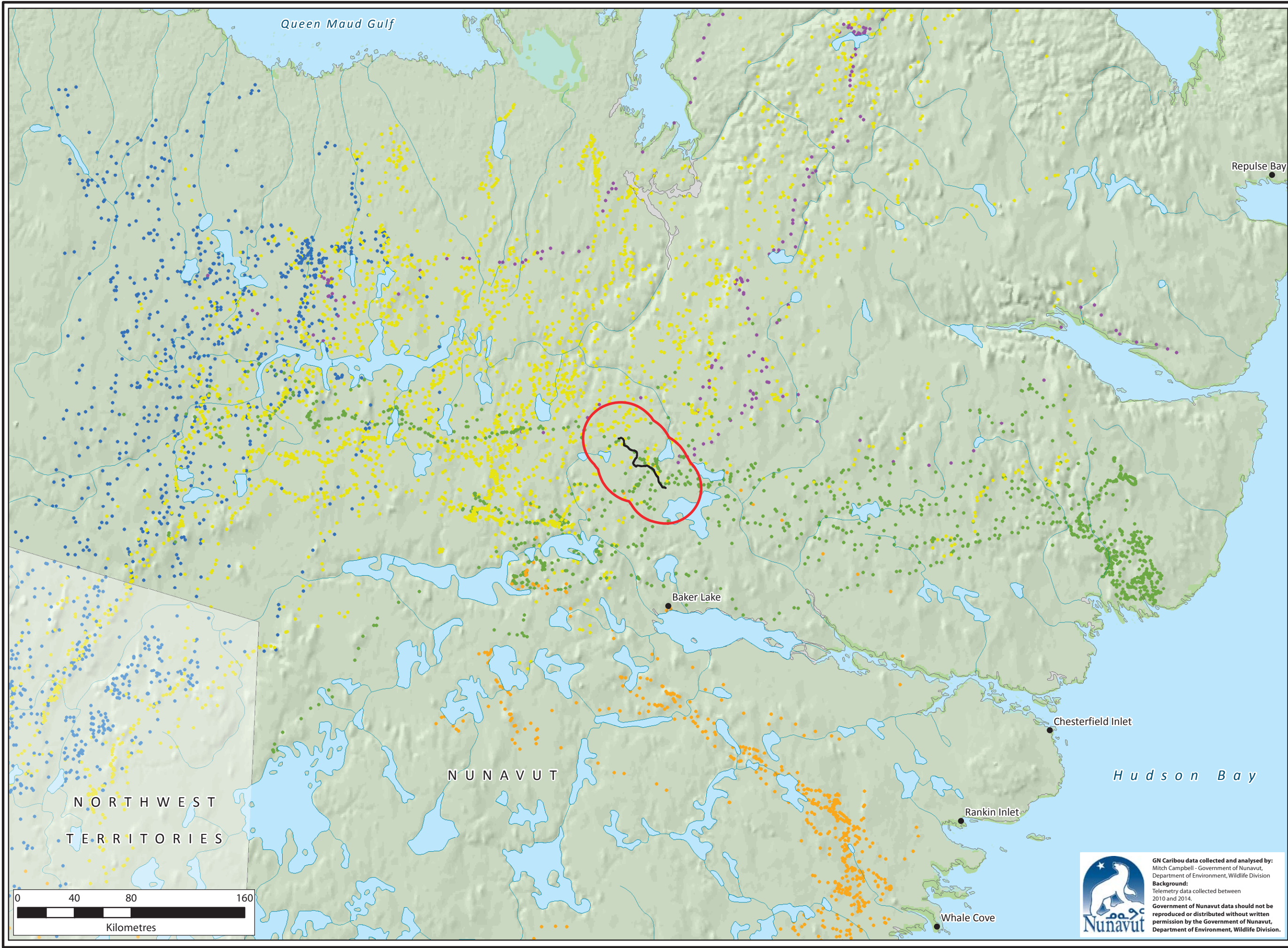
SCALE: 1:4,000,000

DRAWN BY: Caslys

CHECKED BY:

Figure:  
**8.1**

The information displayed on this map has been compiled from various sources. While every effort has been made to accurately depict the information, this map should not be relied on as being a precise indicator of locations, features, or roads, nor as a guide to navigation. MNR data provided by Queen's Printer of Ontario. Use of the data in any derivative product does not constitute an endorsement by the MNR or the Ontario Government of such products.



**Legend**

— Proposed Road

□ RSA Boundary

**Telemetry Location by Herd**

- Ahlak
- Beverly
- Lorillard
- Qamanirjuaq
- Wager Bay

**Amaruq Exploration Road  
Spring Caribou Collaring Data  
(April 1 - May 25)**

 **DOUGAN & ASSOCIATES**  
ECOLOGICAL CONSULTING & DESIGN

77 Wyndham Street South • Guelph ON N1E 5R3  
T 519.822.1609 • F 519.822.5389 • www.dougan.ca

PROJECT: DA14-053-01

CLIENT: Agnico Eagle Mines Limited



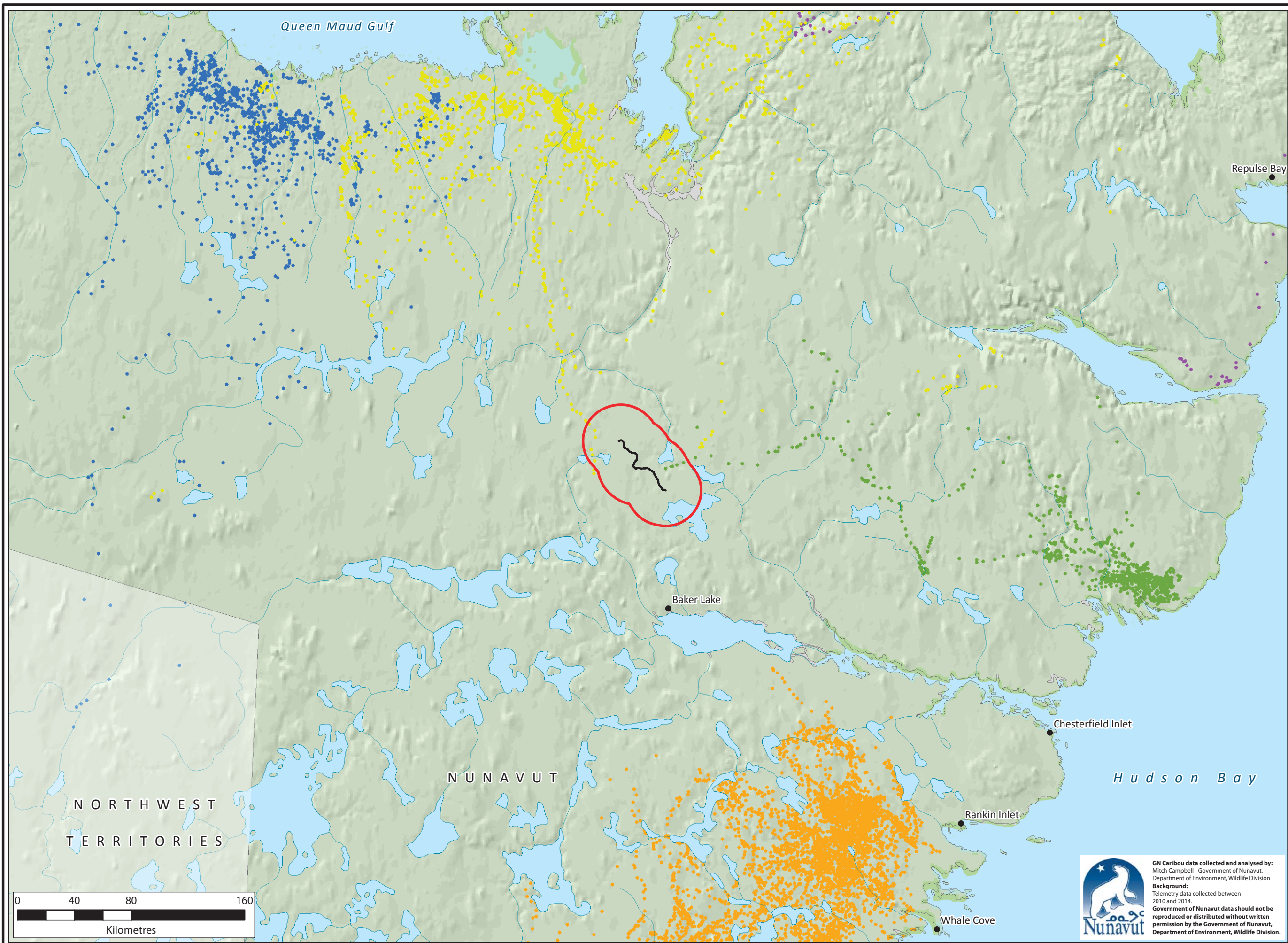
	DATE: NOVEMBER 2014
	SCALE: 1:2,500,000
	DRAWN BY: Caslys
	CHECKED BY:

Figure: 8.2

The information displayed on this map has been compiled from various sources. While every effort has been made to accurately depict the information, this map should not be relied on as being a precise indicator of locations, features, or roads, nor as a guide to navigation. MNR data provided by Queen's Printer of Ontario. Use of the data in any derivative product does not constitute an endorsement by the MNR or the Ontario Government of such products.

 **GN Caribou data collected and analysed by:**  
Mitch Campbell - Government of Nunavut,  
Department of Environment, Wildlife Division

**Background:**  
Telemetry data collected between  
2010 and 2014.  
**Government of Nunavut data should not be  
reproduced or distributed without written  
permission by the Government of Nunavut,  
Department of Environment, Wildlife Division.**



**Legend**  
— Proposed Road  
□ RSA Boundary  
**Telemetry Location by Herd**

- Ahiak
- Beverly
- Lorillard
- Qamanirjuaq
- Wager Bay

Amaruq Exploration Road  
**Calving Caribou Collaring Data**  
(May 26 - June 25)

**DOUGAN & ASSOCIATES**  
ECOLOGICAL CONSULTING & DESIGN

77 Wyndham Street South • Guelph ON N1E 5R3  
T 519.822.1609 • F 519.822.5389 • [www.dougan.ca](http://www.dougan.ca)

PROJECT: DA14-053-01

CLIENT: Agnico Eagle Mines Limited

	DATE: NOVEMBER 2014
	SCALE: 1:2,500,000
	DRAWN BY: Caslys
	CHECKED BY:

Figure: 8.3

The information displayed on this map has been compiled from various sources. While every effort has been made to accurately depict the information, this map should not be relied on as being a precise indicator of locations, features, or roads, nor as a guide to navigation. MNR data provided by Queen's Printer of Ontario. Use of the data in any derivative product does not constitute an endorsement by the MNR or the Ontario Government of such products.