



Location 14. Oblique aerial photograph 14-1.

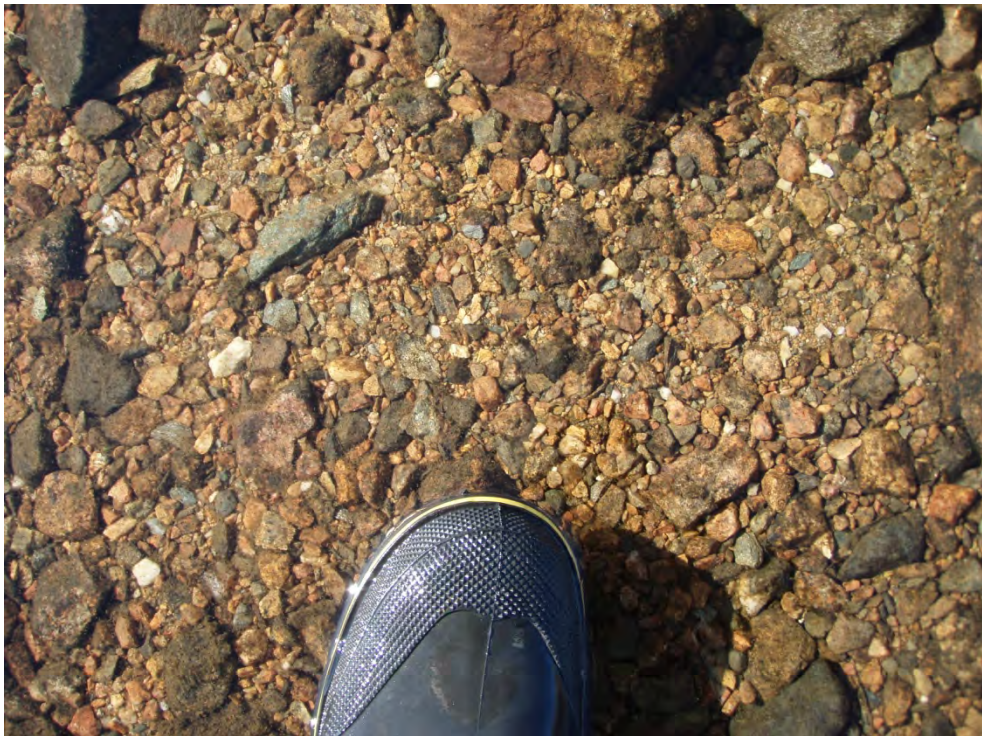


Location 14. Photograph from the ground. Approximately 100 m upstream from lake.





Location 14. Photograph from the ground. Approximately 150 m upstream from lake.



Location 14. Photograph from the ground. Gravel substrate 150 m upstream from lake.





Locations 15 and 16. Aerial photograph (scale 1:5000) showing the approximate road route, the location of coordinates provided in Table 3-2, the flow direction, and the location of oblique aerial photographs. Lake at Location 15 will be avoided.





Location 16. Oblique aerial photograph 16-1.



Location 16. Oblique aerial photograph 16-2.



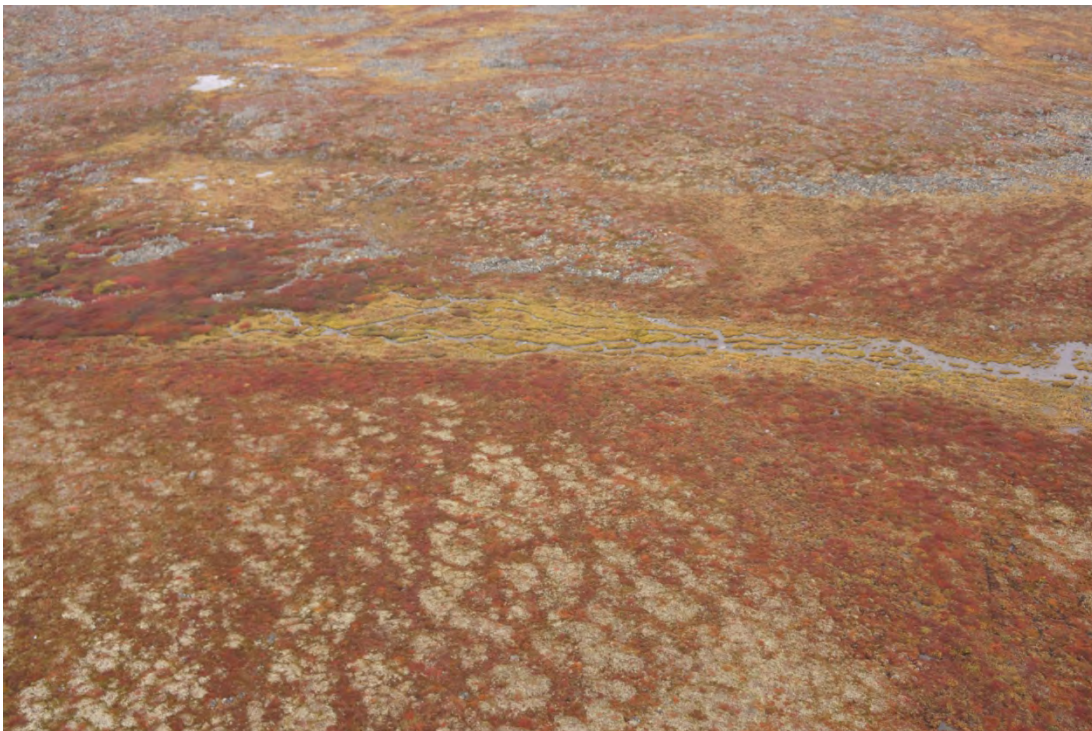


Location 17. Aerial photograph (scale 1:5000) showing the approximate road route, the location of coordinates provided in Table 3-2, the flow direction, and the location of oblique aerial photographs.





Location 17. Oblique aerial photograph 17-1.



Location 17. Oblique aerial photograph 17-2.





Location 17. Photograph from the ground. Near watercourse mouth and road crossing.



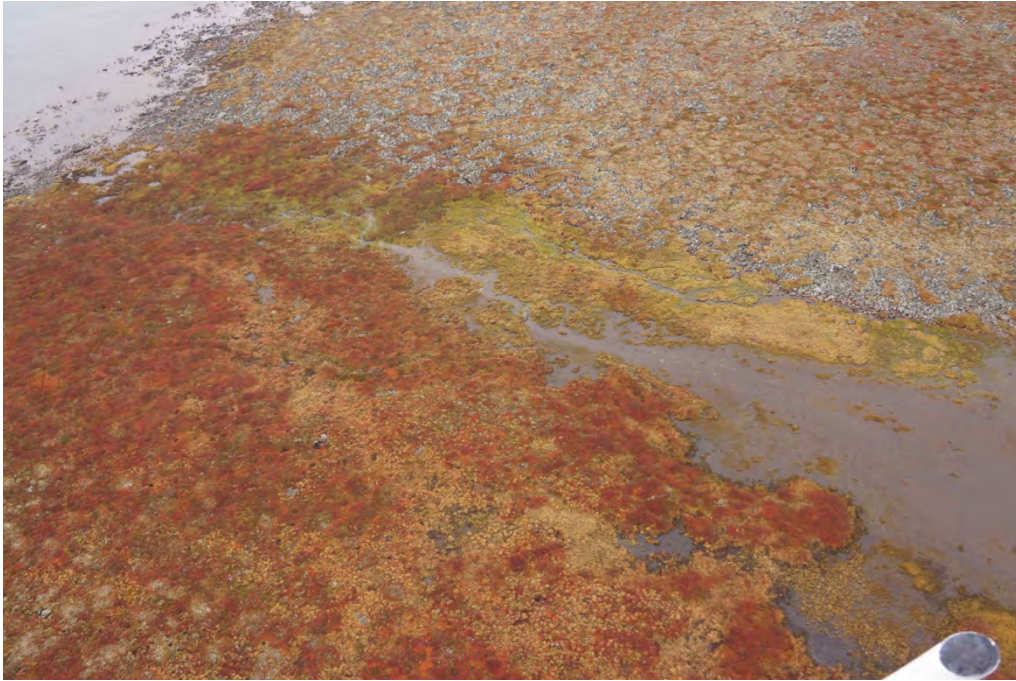
Location 17. Photograph from the ground. Upstream view approximately 200 m upstream of watercourse mouth.





Locations 18 and 19. Aerial photograph (scale 1:5000) showing the approximate road route, the location of coordinates provided in Table 3-2, the flow direction, and the location of oblique aerial photographs. Lake at Location 19 will be avoided.





Location 18. Oblique aerial photograph 18-1.

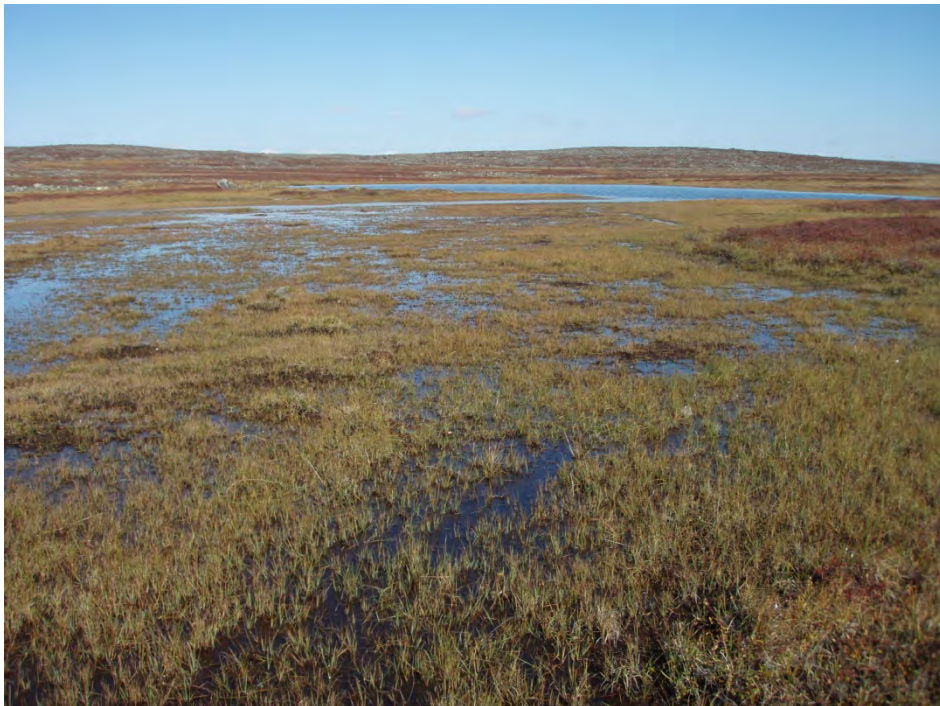


Location 18. Photograph from the ground. Upstream view approximately 100 m upstream of watercourse mouth.





Location 18. Photograph from the ground. Approximately 100 m upstream of watercourse mouth.



Location 18. Photograph from the ground. Upstream view approximately 180 m upstream of watercourse mouth.





Location 19. Oblique aerial photograph 19-1.



Location 19. Photograph from the ground. Watercourse mouth.





Location 20. Aerial photograph (scale 1:5000) showing the approximate road route, the location of coordinates provided in Table 3-2, the flow direction, and the location of oblique aerial photographs. Lakes near Location 20 will be avoided.





Location 20. Oblique aerial photograph 20-1.



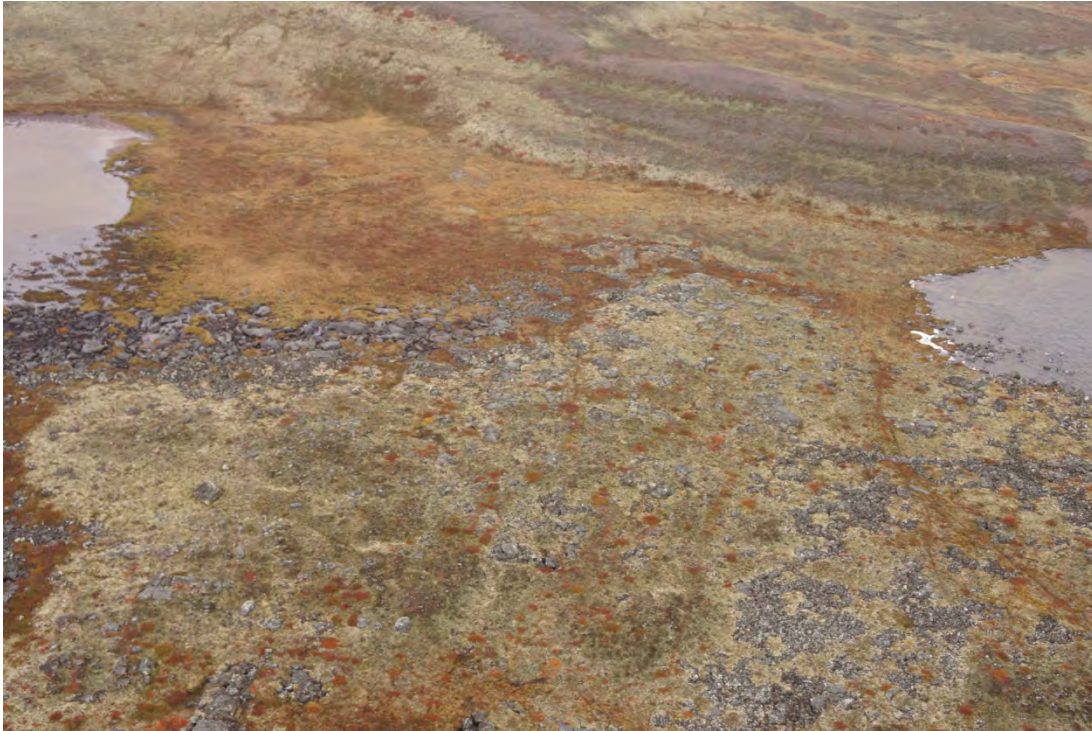
Location 20. Photograph from the ground. Note flow through narrows.





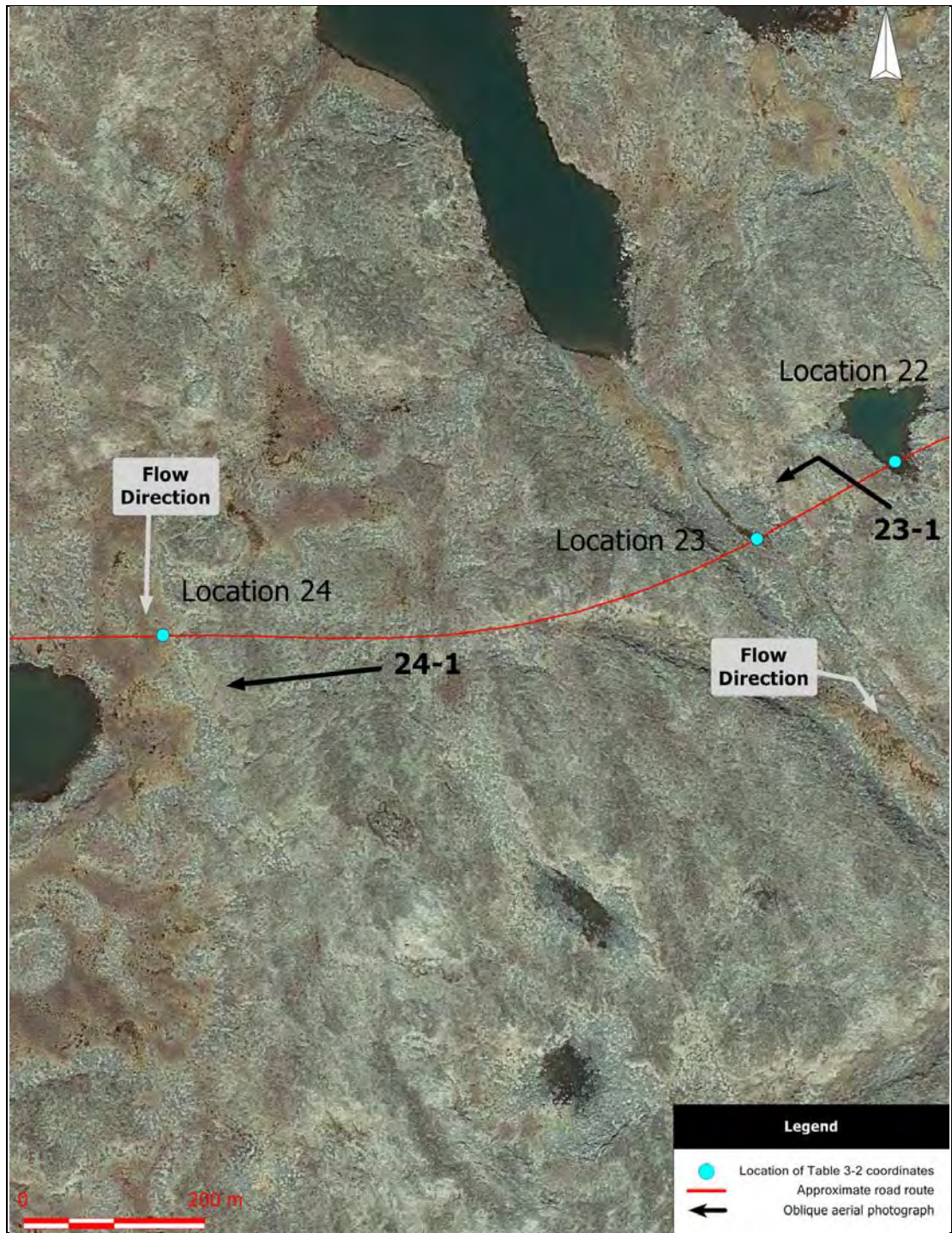
Location 21. Aerial photograph (scale 1:5000) showing the approximate road route, the location of coordinates provided in Table 3-2, the flow direction, and the location of oblique aerial photographs. Lake near Location 21 will be avoided.





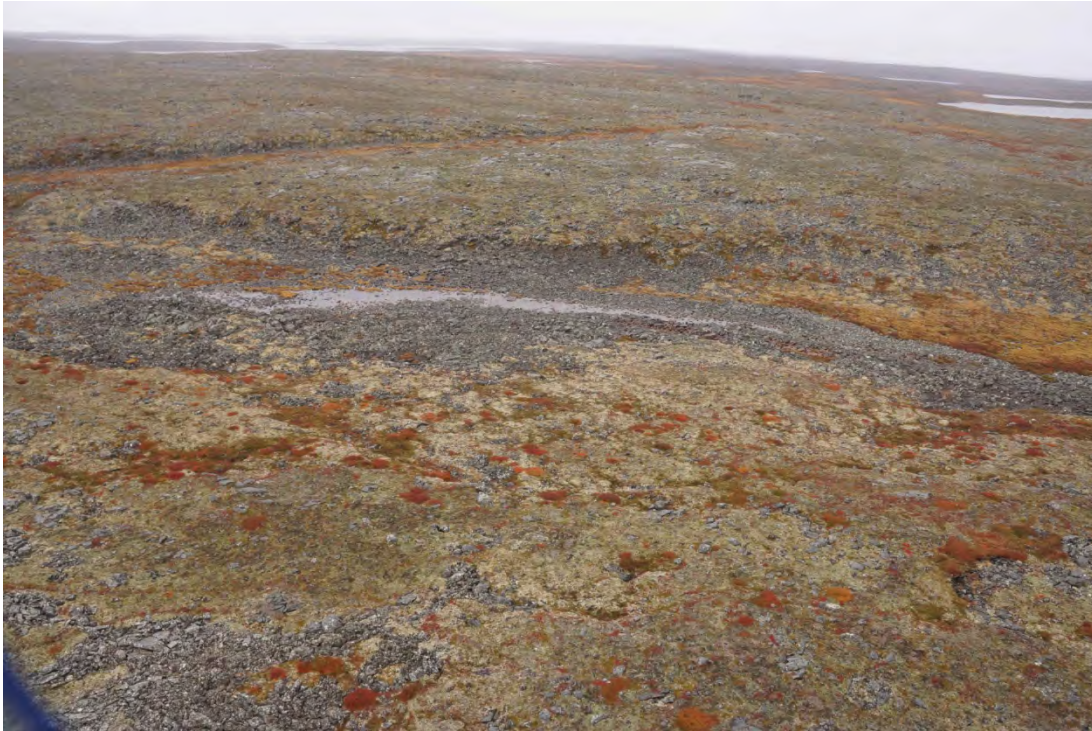
Location 21. Oblique aerial photograph 21-1.



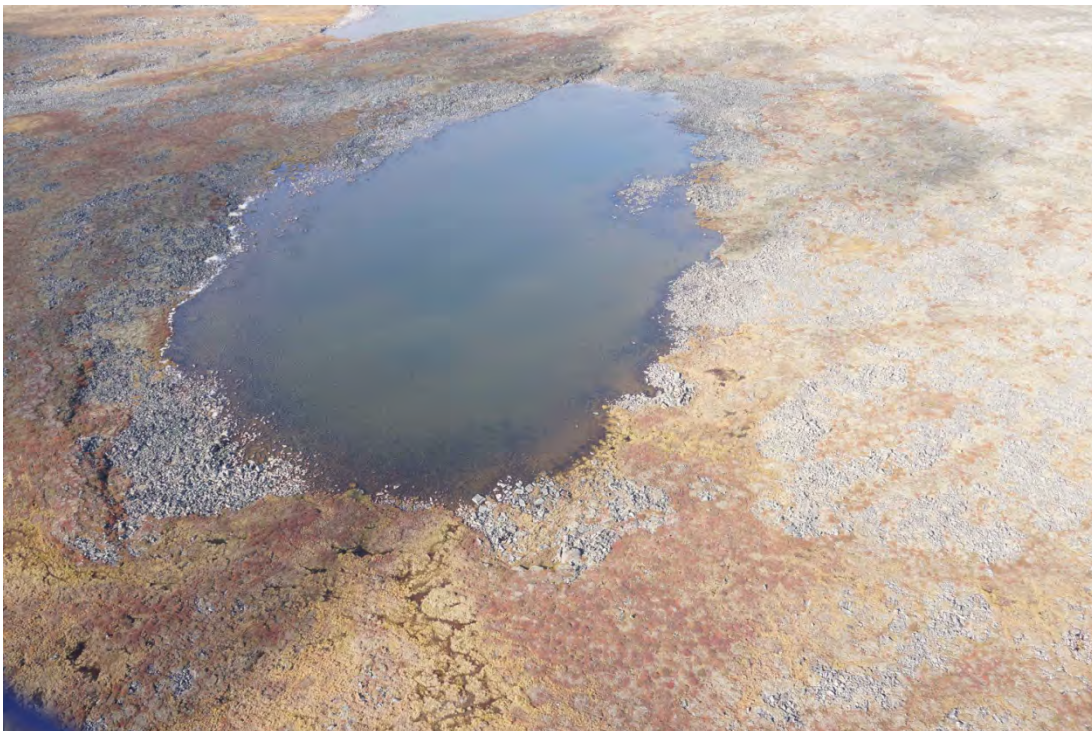


Locations 22, 23 and 24. Aerial photograph (scale 1:5000) showing the approximate road route, the location of coordinates provided in Table 3-2, the flow direction, and the location of oblique aerial photographs. Pond at Location 22 will be avoided.





Location 23. Oblique aerial photograph 23-1.



Location 24. Oblique aerial photograph 24-1.





Locations 25 and 26. Aerial photograph (scale 1:5000) showing the approximate road route, the location of coordinates provided in Table 3-2, the flow direction, and the location of oblique aerial photographs. Lake at Location 25 will be avoided.