



Location 25. Oblique aerial photograph 25-1.



Location 26. Oblique aerial photograph 26-1.





Location 27. Aerial photograph (scale 1:5000) showing the approximate road route, the location of coordinates provided in Table 3-2, the flow direction, and the location of oblique aerial photographs.



Location 27. Oblique aerial photograph 27-1.





Location 28. Aerial photograph (scale 1:5000) showing the approximate road route, the location of coordinates provided in Table 3-2, the flow direction, and the location of oblique aerial photographs.





Location 28. Oblique aerial photograph 28-1.



Location 28. Photograph from the ground. Downstream view through approximate crossing location.



Location 28. Photograph from the ground. Upstream view from previous photograph location.





Locations 29, 30 and 31. Aerial photograph (scale 1:5000) showing the approximate road route, the location of coordinates provided in Table 3-2, the flow direction, and the location of oblique aerial photographs.





Location 29. Oblique aerial photograph 29-1.



Location 29. Oblique aerial photograph 29-2.



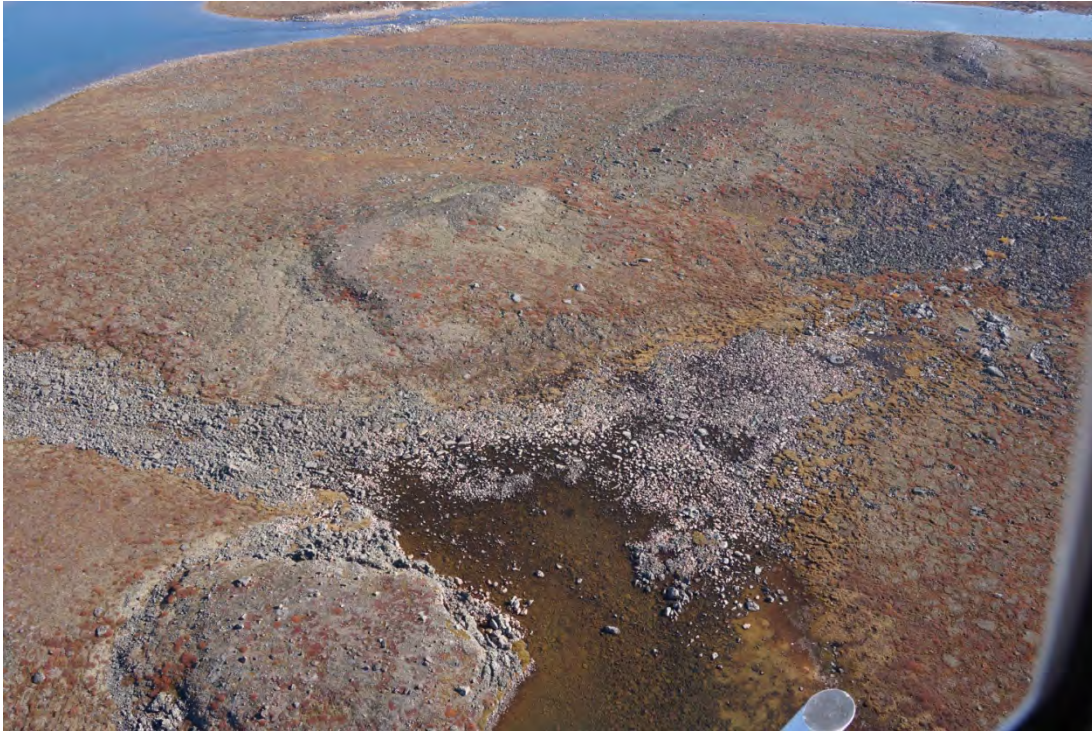


Location 30. Oblique aerial photograph 30-1.



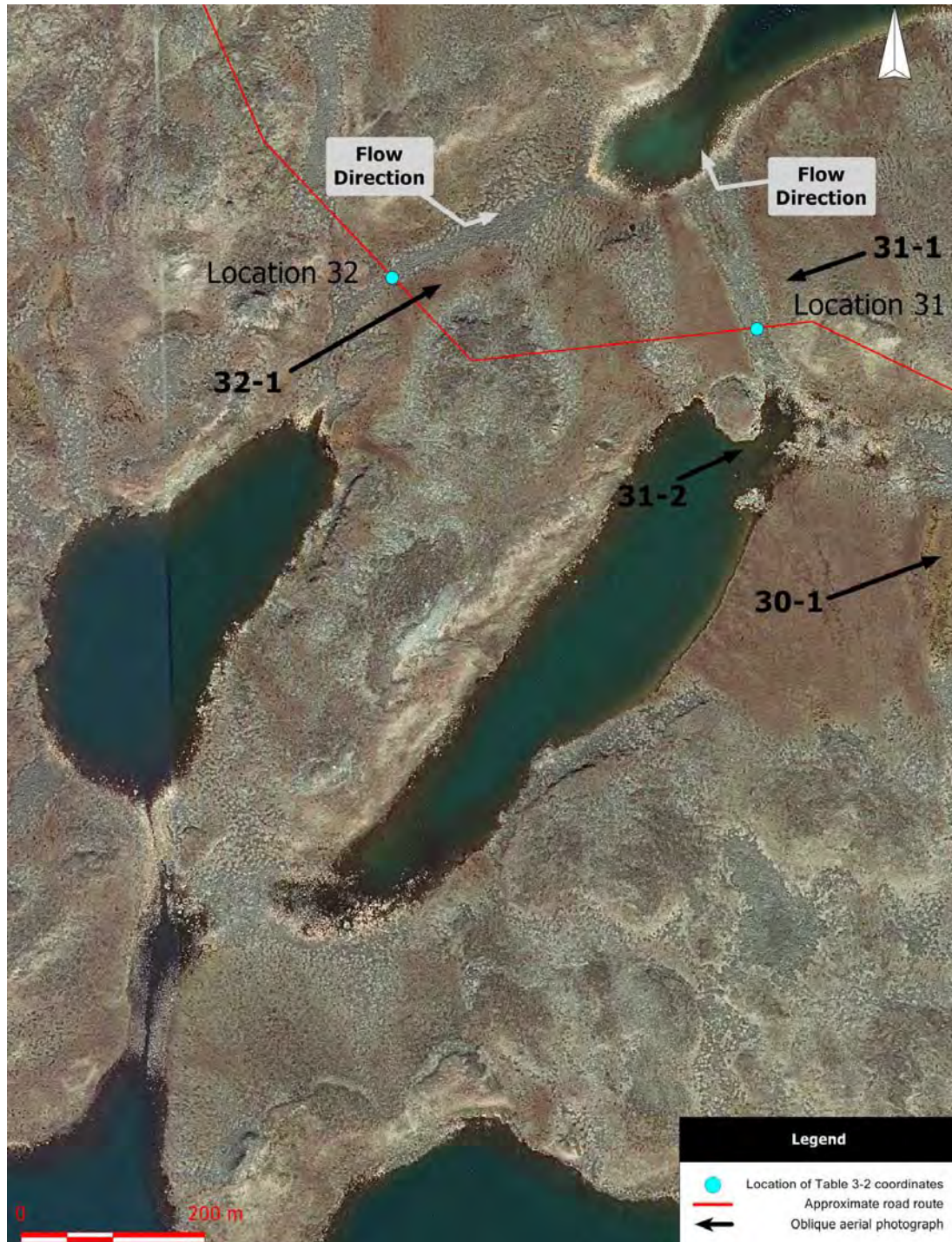
Location 31. Oblique aerial photograph 31-1.





Location 31. Oblique aerial photograph 31-2. Left is watercourse 31. Right is watercourse 30.





Location 32. Aerial photograph (scale 1:5000) showing the approximate road route, the location of coordinates provided in Table 3-2, the flow direction, and the location of oblique aerial photographs.





Location 32. Oblique aerial photograph 32-1.





Location 33. Aerial photograph (scale 1:5000) showing the approximate road route, the location of coordinates provided in Table 3-2, the flow direction, and the location of oblique aerial photographs.





Location 33. Oblique aerial photograph 33-1.



Location 33. Oblique aerial photograph 33-2.





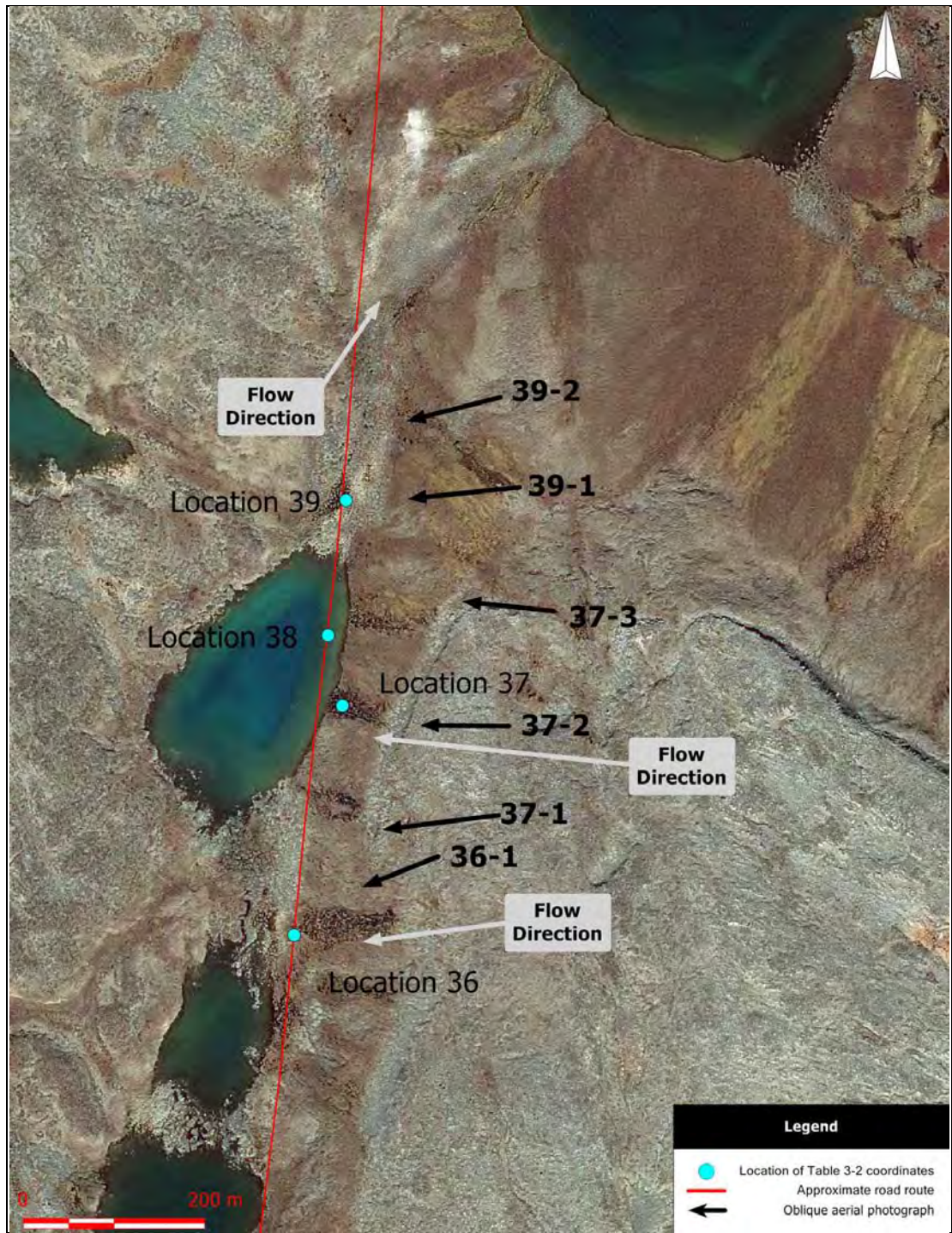
Locations 34 and 35. Aerial photograph (scale 1:5000) showing the approximate road route, the location of coordinates provided in Table 3-2, the flow direction, and the location of oblique aerial photographs. Lake at Location 34 will be avoided.





Locations 34 and 35. Oblique aerial photograph 35-1. Location 35 is the watercourses in foreground. Location 34 is the lake nearshore.





Locations 36, 37, 38 and 39. Aerial photograph (scale 1:5000) showing the approximate road route, the location of coordinates provided in Table 3-2, the flow direction, and the location of oblique aerial photographs. Lake at Location 38 will be avoided.



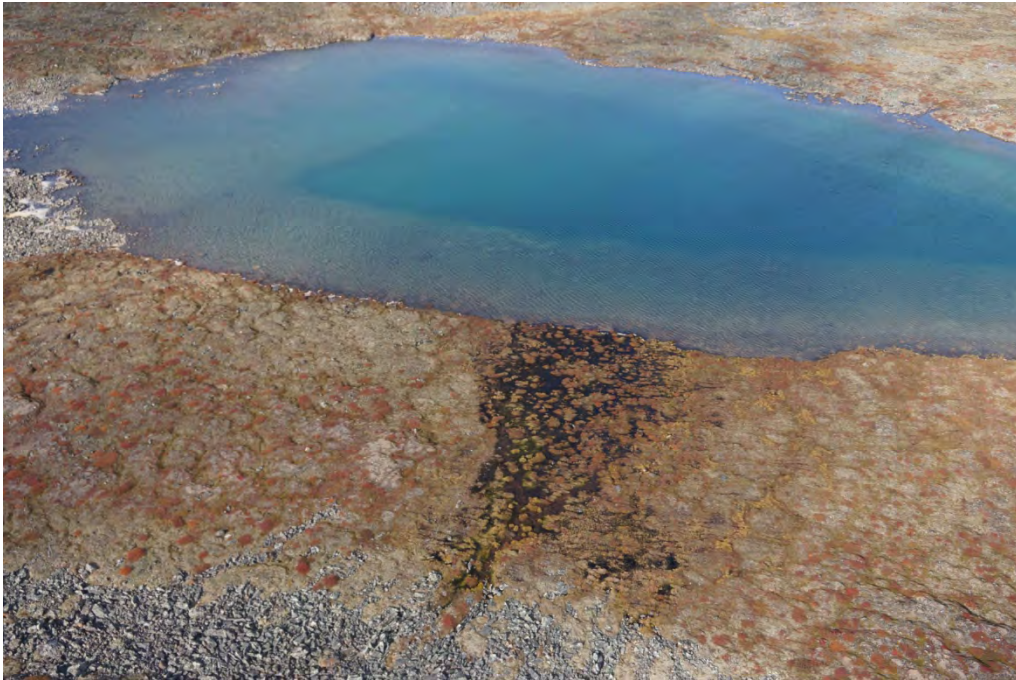


Location 36. Oblique aerial photograph 36-1.

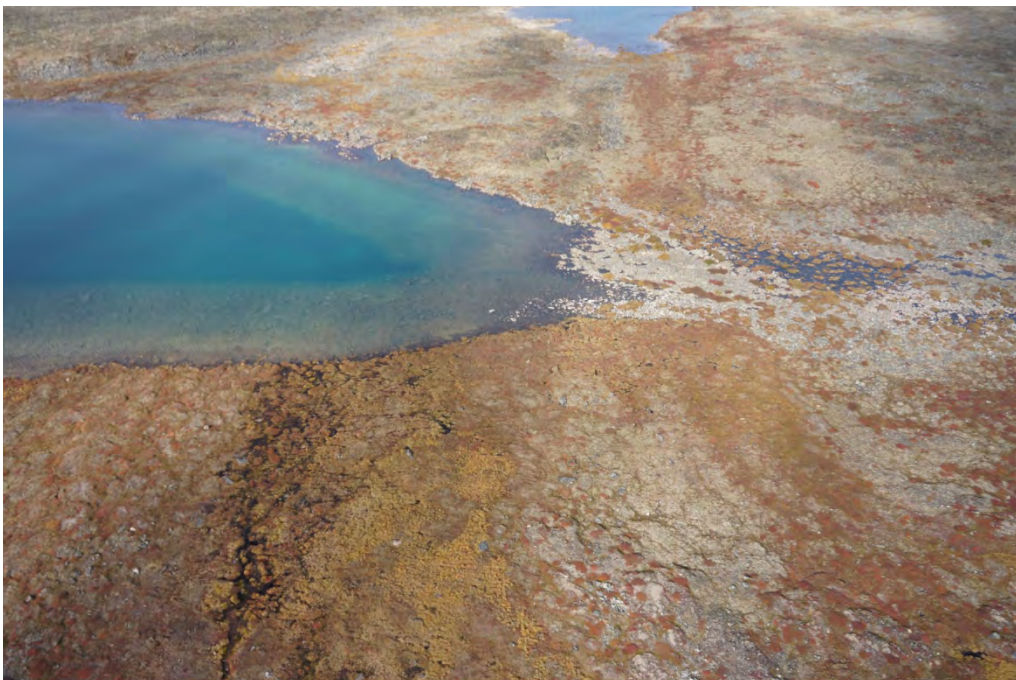


Location 37. Oblique aerial photograph 37-1. One of the three watercourses/seeps included in Location 37.





Location 37. Oblique aerial photograph 37-2. One of the three watercourses/seeps included in Location 37. Location 38 is the nearshore of the lake.

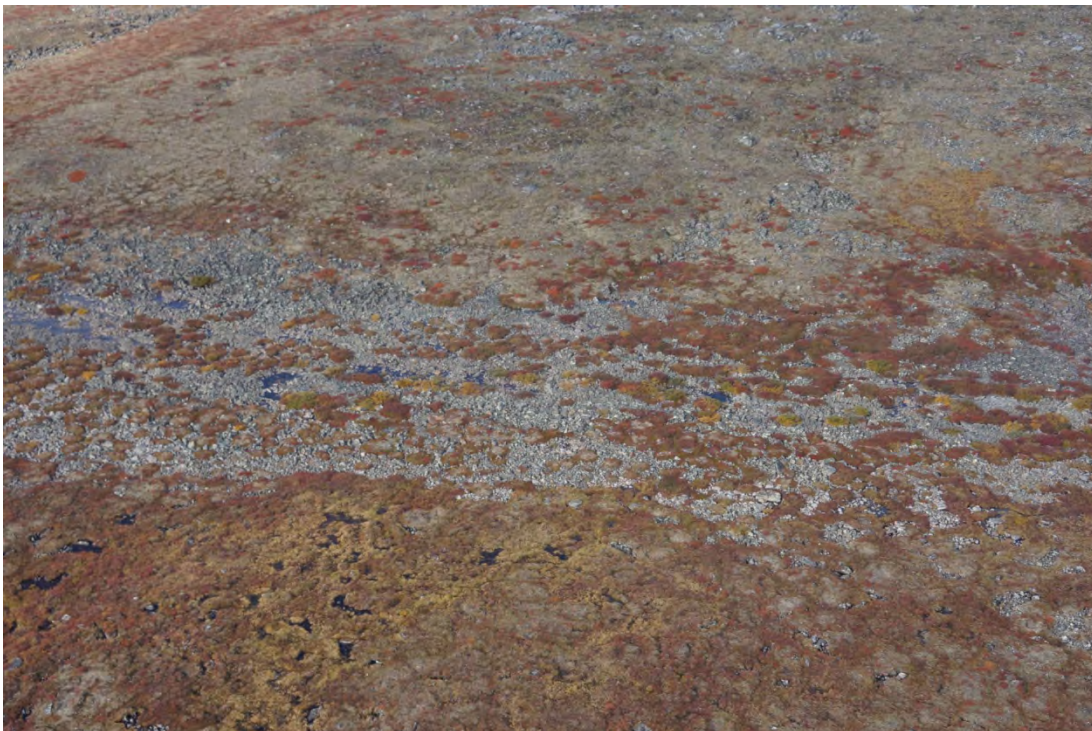


Location 37. Oblique aerial photograph 37-3. One of the three watercourses/seeps included in Location 37. Location 38 is the nearshore of the lake.





Location 39. Oblique aerial photograph 39-1.



Location 39. Oblique aerial photograph 39-2.





Locations 40 and 41. Aerial photograph (scale 1:5000) showing the approximate road route, the location of coordinates provided in Table 3-2, the flow direction, and the location of oblique aerial photographs.