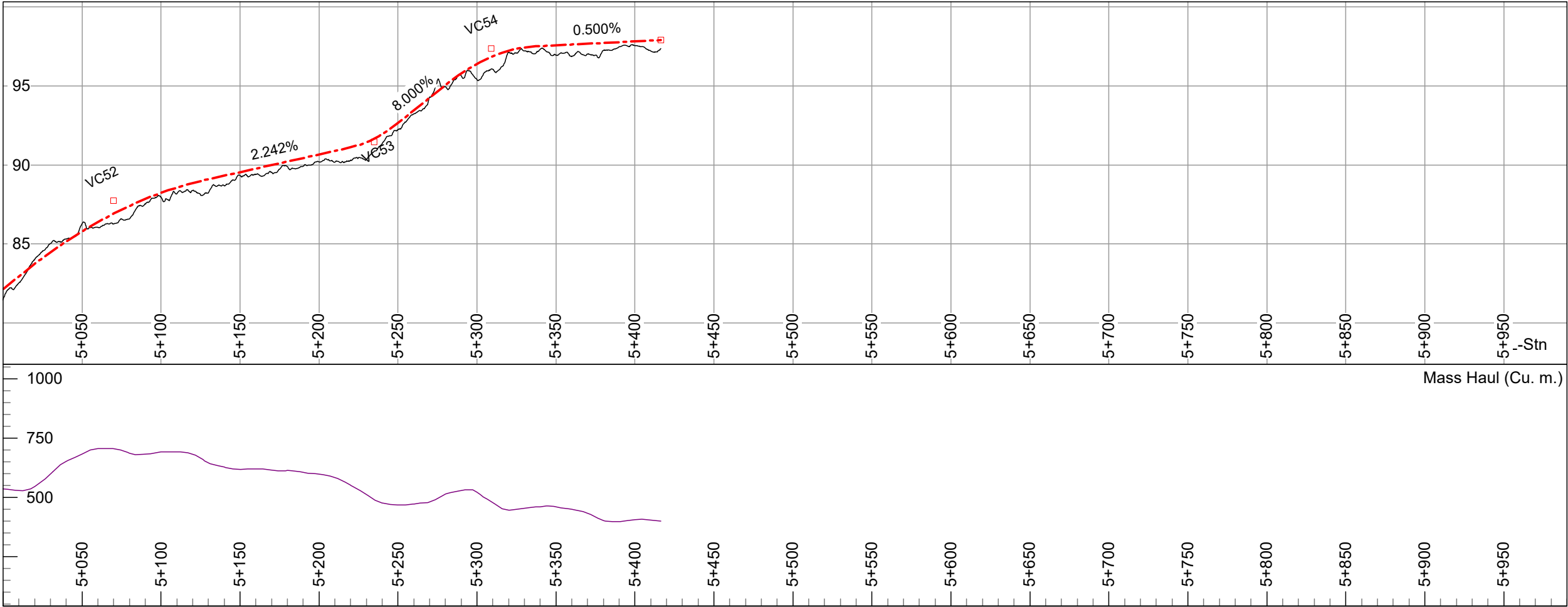
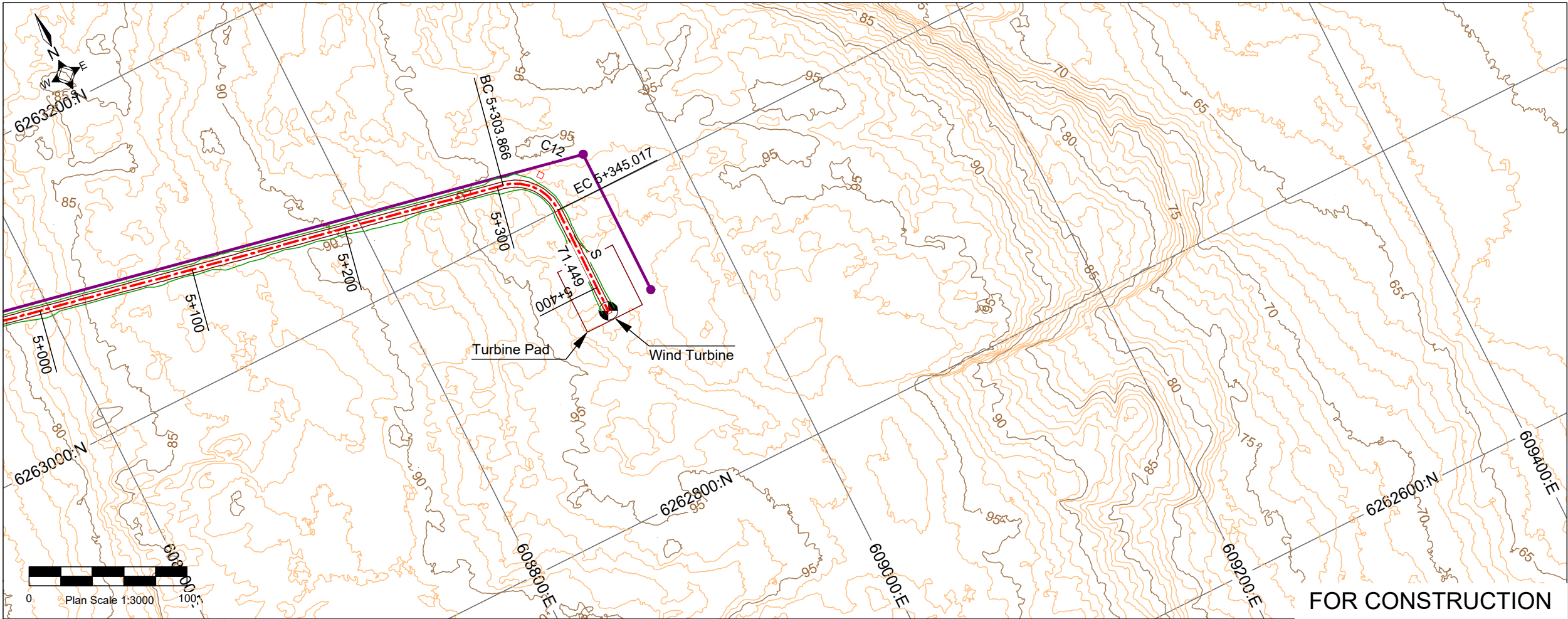


THIS DRAWING SHALL NOT BE REPRODUCED IN ANY MANNER OR FOR ANY PURPOSE EXCEPT BY WRITTEN PERMISSION OF CANADIAN PROJECTS LIMITED AND IS PROTECTED BY COPYRIGHT LAW. © 2023 THIS DRAWING MUST BE STAMPED, SIGNED AND DATED TO BE APPROVED FOR CONSTRUCTION. VOID ALL DRAWINGS BEARING AN EARLIER DATE OR REVISION NUMBER.





Horizontal Curves				
	IP X	IP Y	Angle (I)	Radius (R)
C12	608916.000	6263025.000	78.592°	30.000

Vertical Curves				
	VIP Stn.	VIP Z	K'	Len.(L)
VC52	5+070.000	87.748	20.000	115.164
VC53	5+235.000	91.447	5.100	29.368
VC54	5+308.960	97.364	7.500	56.256

Culverts
----------

- Notes:
1. Dimensions and elevations in metres, unless noted otherwise.
  2. Planimetric features from CanVec data obtained from the Government of Canada.
  3. 1m interval contours generated by Canadian Projects Limited from DEM data provided by Arctic UAV in October, 2022.
  4. Horizontal Datum: NAD83 (CSRS) UTM Zone 17
  5. Vertical Datum: CGVD28 HT2.0 epoch
  6. Dimensions are UTM based. Scale layout to ground as required.
  7. Drawing is intended to provide road alignment and approximate representation only of clearing and earthworks requirements.
  8. This drawing shall be read in conjunction with drawings 2111, 2112, 2211, 2212 and 2213.
  9. See drawing 2521 for transmission line alignment.

Legend	
	Road Centerline
	Edge of Road
	Top of Cut/Toe of Fill
	New Transmission Line
	Existing Road
	Existing Trail
	Profile Original Ground



CIVIL							
0	23	06	16	Revised Drawing Status	ADF	GS	ADF
Rev	Y	M	D	Revision Description	Des	Chk	Drn



Nunavut Nukkiksautiit Corporation

Anuriqjuak Nukkiksautiit Project

Civil - Roads

Wind Turbine Access Road

Plan and Profile 5+000.000 To 5+416.466