

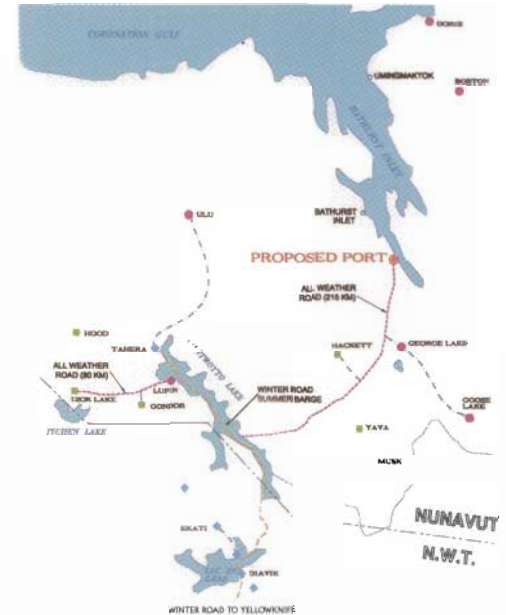
# the Bathurst Inlet Port & Road Project Kitikmeot Region, Nunavut

## LOCATION

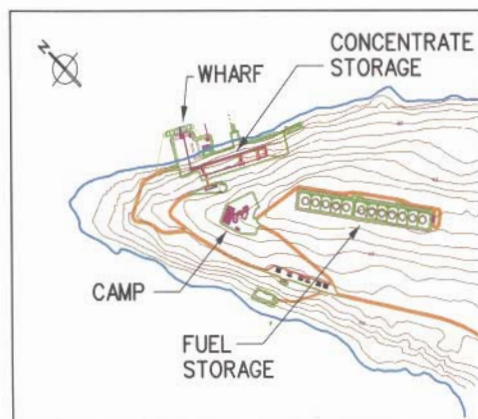
- The Project is located wholly in the Kitikmeot Region of Nunavut, within the northern end of the mineral rich Slave Geological Province.

## PROJECT

- The Project consists of the development of a marine port on Bathurst Inlet and construction of a 290 km all weather road between the port and the Izok mineral deposit, the most westerly point.
- The road is planned in two sections, Bathurst Inlet to Contwoyto Lake, approximately 210 kms, and Lupin Mine to Izok, approximately 80 kms. Contwoyto Lake lies between the two all weather road sections. A winter road across the lake, or barges in the summer, will connect the two roads.
- Concentrates from potential base metal mines along the corridor will be trucked to the port.
- Ocean going vessels will transport the concentrates to markets.
- Fuel and supplies for mineral properties and Kitikmeot communities will be shipped into Bathurst Inlet on the return trips.



**PORT SITE**



## BENEFITS

The primary benefit of the Port and Road Project to the Kitikmeot Region of Nunavut will be reduced transportation costs leading to:

- Reduced capital and operating cost for mineral exploration, mine development and operations in the northern portion of the Slave Geological Province.
- Increased mineral exploration activity.
- Increase in the value of mineral deposits, leading to a greater probability of mine development.
- Reduction in the cost of fuel and supplies for the Kitikmeot communities.
- Increase employment, training, business development and resulting social benefits in the Region.
- Increased economic activity and taxation revenues to Nunavut.

## PROJECT ECONOMICS

- Project Economics would be based on recovering costs, primarily through road tolls, freight charges and/or user fees and to a lesser extent, possibly in the form of low interest loans or grant monies from the Federal Government.

## STATUS

- Preliminary studies indicate a viable project.
- Scoping studies have been completed.
- Feasibility Study and Environmental Baseline Studies are underway.

## PARTNERSHIP

