



National Defence

Défense nationale

3rd Canadian Division
Headquarters

Quartier General
3e Division du Canada

Building 700, Vimy Ave
P.O. Box 10500, Station Forces
Edmonton, AB T5J 4J5

Edifice 700, avenue Vimy
CP 10500, Succ Forces
Edmonton, AB T5J 4J5

1267-1-5 (Northern Environmental Coordinator)

5 May 2024

Ms. Nidhi Singh
Technical Advisor
Nunavut Water Board
PO Box 119
Gjoa Haven, NU X0B 1J0

EXERCISE RECOVERY RANGER (AMADJUAKE LAKE) PROJECT SUMMARY

The purpose of this letter is to provide notification of military operations pursuant to the Nunavut Land Claims Agreement.

The Department of National Defence (DND) proposes to conduct both recce and recovery operations of the lost 1 CRPG equipment from the lakebed of the North Bay region of Amadjuak Lake. The current plan is to conduct a recce operation in summer 2024 (tentatively June 1 to October 15) with up to 10 military personnel to collect valuable intel using side sonar equipment to accurately collect the location and depth of all missing submerged items with one zodiac boat and collect nearby land terrain information with GPS imbedded photos.

The larger recovery operation is to take place during summer/fall 2024 (tentatively June 1 to October 15). During the recovery, one temporary camp will be erected for up to 25 military personnel for a duration of no longer than 10 days that will also serve as the Main Operating Base (MOB). The camp will be composed of six McPhearson tents with Yukon stoves for the entire duration and the exact location will be determined by ground conditions. The recovery team will include divers that will be working on and in Amadjuak Lake, Canadian Rangers to provide local knowledge, support and predator control, environmental personnel to provide oversight and guide pollution prevention measures, and other personnel to support the operation. The recce and recovery efforts will be based out of Iqaluit as the Forward Operating Base (FOB) for the Amadjuak Lake operations. Two zodiacs and equipment will be used to recover the items, and a helicopter will also be used to recover and properly dispose of items, with pollution prevention measures being employed through all phases of the recovery. Furthermore, once recovered, all fluids will be drained from the two snowmobiles and other petroleum oils and lubricants recovered will be properly contained prior to transport back to Iqaluit for proper disposal.

During both the recce and recovery operations, water for drinking, cooking, and hygiene may be drawn from the nearby Amadjuak Lake. Greywater will be disposed of into a sump that will be at

Canada 

least 31 m away from the shoreline and sewage will be properly contained and transported out for disposal at a proper waste facility.

Please note that our summer/fall dates may change slightly due to unpredictable circumstances, such as poor weather. All personnel participating in the recce and recovery operations will be self-sufficient and we do not intend to draw on the local economy for logistical support or resupply.

It is requested that this notice be included with any permit or other approval applications and distributed as deemed appropriate. Should there be any questions or concerns, or any additional information is required, please contact myself, Lieutenant (Navy) Keith Diakiw, in Edmonton, Alberta, at (780) 973-4011 ext. 8049 or keith.diakiw@forces.gc.ca.

Sincerely,

K.R. Diakiw
Lieutenant (Navy)
Northern Environmental Coordinator
3 Canadian Division Support Group Environment & Safety (3 CDSG E&S)

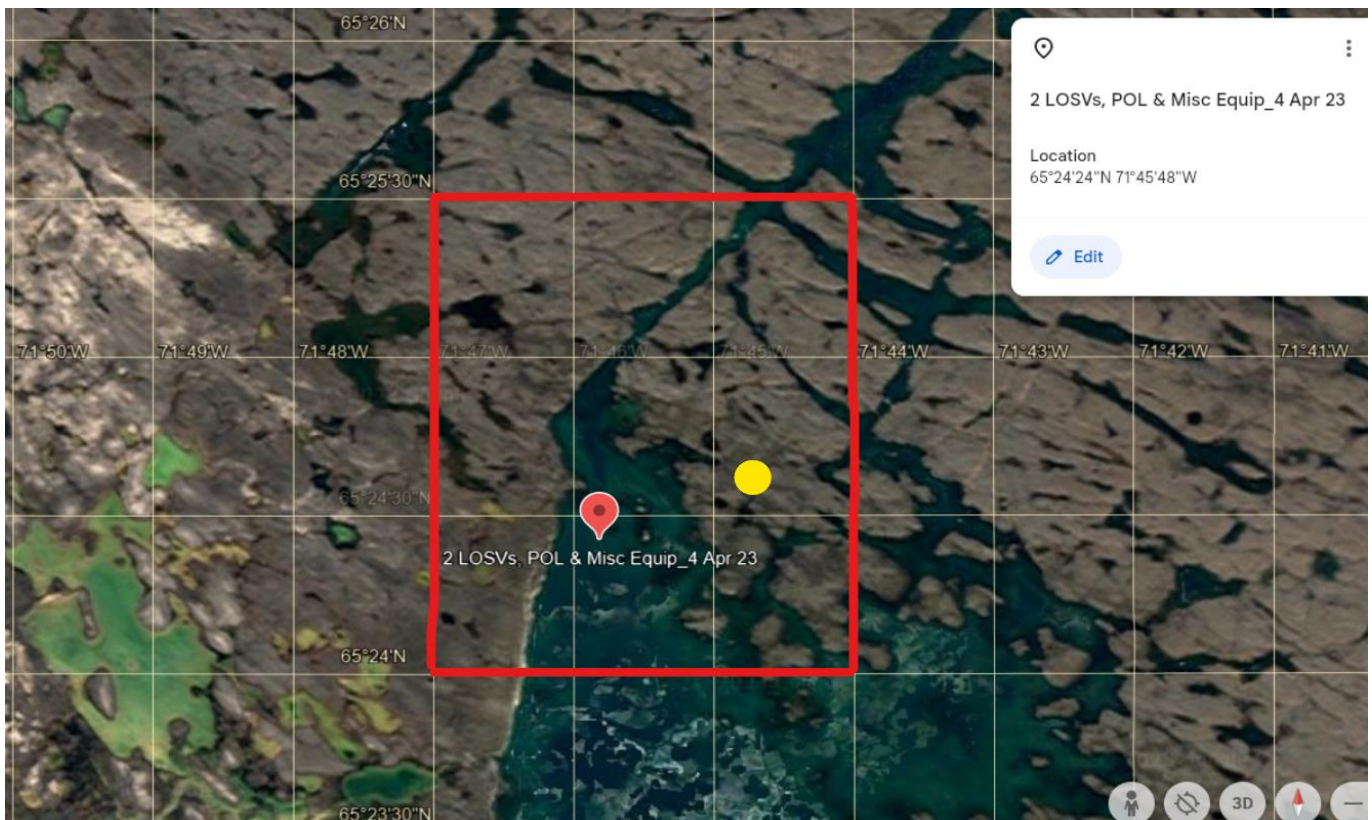
(On behalf) of Lieutenant Colonel Kristian Udesen
Commanding Officer
1 Canadian Ranger Patrol Group (1 CRPG)
5020 48 Street (Joe Tobie Building)
Yellowknife, NT X1A 1N3
Email: kristian.udesen@forces.gc.ca
Phone: (867) 873-0700 Ext 6834

Enclosure(s):

Annex A Project Map

Annex A Project Map

EXERCISE RECOVERY RANGER OPERATION MAP (MOB Camp & Op Box Locations)



Main Operation Box (Op Box) Extent Coordinates (DMS & Decimal Degree):

NW 65 25'30"N 71 47'00"W	65.425000 -71.783333
NE 65 25'30"N 71 44'00"W	65.425000 -71.733333
SE 65 24'00"N 71 44'00"W	65.400000 -71.733333
SW 65 24'00"N 71 47'00"W	65.400000 -71.783333