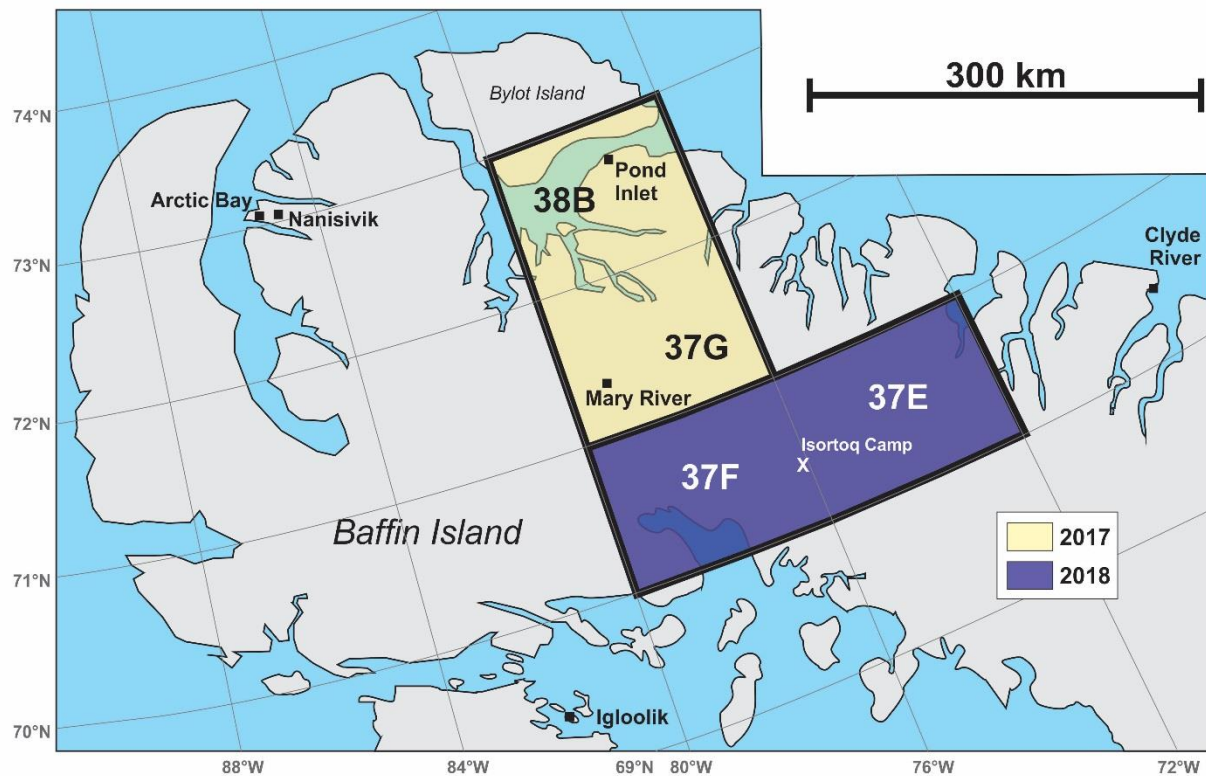




# Geological Survey of Canada GEM-2 North Baffin Bedrock Mapping (Steensby-Barnes)

Benoit Saumur & Diane Skipton

## Supplemental Documentation: Map of 2018 Field Area



**Figure 1:** Area for 2018 fieldwork (in purple), including the position of the proposed Isortoq Camp.



**Figure 2:** Landsat view (Google Earth©) of proposed camp along the Isortoq River (IRC – Isortoq River Camp).