



Environment
Canada

Environnement
Canada

SPILL CONTINGENCY PLAN

Nikko Island Goose Banding Camp

Baffin Island, Nunavut

January, 2015

FACILITY MANAGER

Dr. Jim Leafloor
Population Management Unit
Population Conservation
Canadian Wildlife Service
Environmental Stewardship Branch
Environment Canada
150-123 Main Street
Winnipeg, MB R3C 4W2
jim.leafloor@ec.gc.ca
Telephone: 204-983-5258
Facsimile: 204-983-5248

ON-SITE FACILITY MANAGERS

<p>Dr. Jim Leafloor Population Management Unit Population Conservation Canadian Wildlife Service Environmental Stewardship Branch Environment Canada 150-123 Main Street Winnipeg, MB R3C 4W2 jim.leafloor@ec.gc.ca Telephone: 204-983-5258 Facsimile: 204-983-5248</p>	<p>Joel Ingram Head, Population Management Unit Population Conservation Canadian Wildlife Service Environmental Stewardship Branch Environment Canada 150-123 Main Street Winnipeg, MB R3C 4W2 joel.ingram@ec.gc.ca Telephone: 204 984-6670 Facsimile: 204 983-5248</p>
--	---

24 HOUR SPILL LINE (NUNAVUT) : 867-920-81309

**EMERGENCY NUMBERS (WINNIPEG): Dr. Jim Leafloor (204) 793-0228 or
Marc Schuster (204) 782-6370**

LOCATION:

The Nikko Island Goose Banding camp is located at N 66° 35.54', W 71° 30.91' (Figure 1).

The Facility has a fuel cache on site where up to 4000L of jet-B fuel (see attached MSDS) may be stored in sealed 200L steel drums; up to 240L of propane (see attached MSDS) may be stored in 20L and/or 100L certified pressure tanks. The cache is located at the camp on a dry land location, approximately 40m south of the camp buildings adjacent to the Landing Strip (Figure 2). When the camp is not occupied, sealed drums are stored inside locked, non-functional, walk-in coolers (Figure 2).



Figure 1: Location of Nikko Island Goose Camp, Baffin Island, NU.

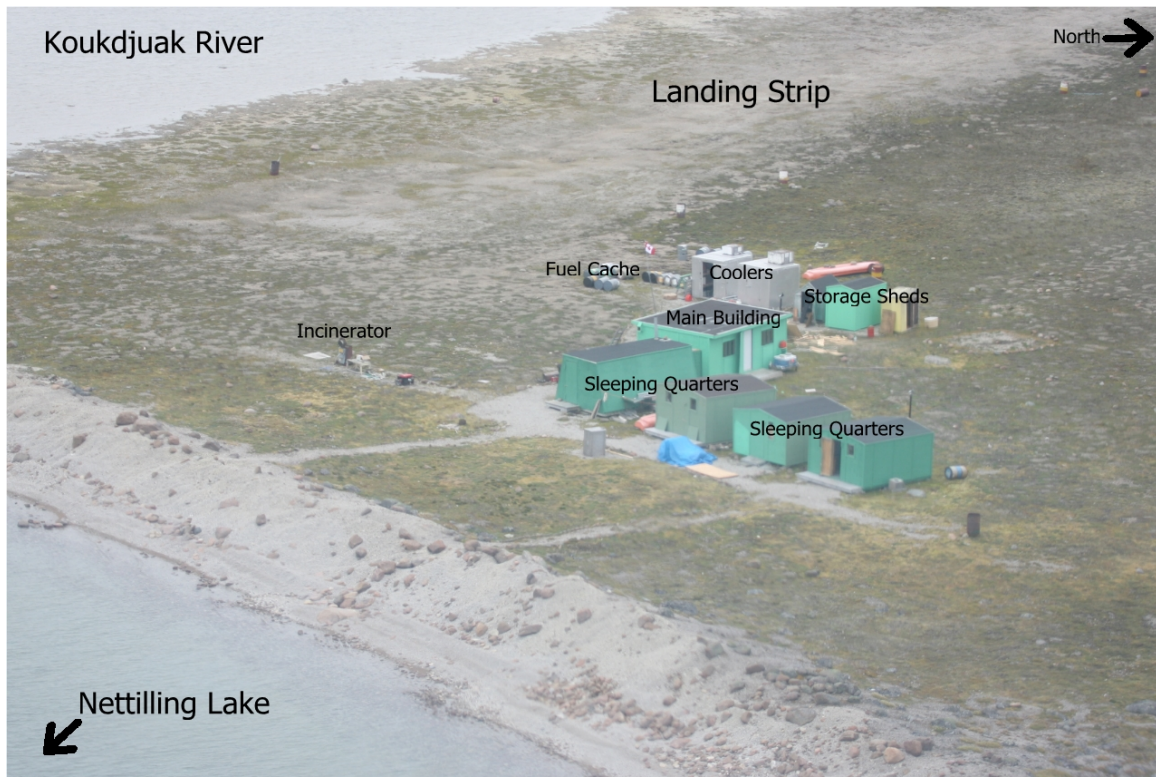


Figure 2. Location of buildings at Nikko Island Goose Camp. Note off season fuel storage location is in cooler.

IN THE EVENT OF A SPILL:

1. Reporting:

- All spills should be reported to the on-site facility manager who will initiate an appropriate response and notify the facility manager (licensee) of the event.
- The licensee shall report the spill to the 24 hour spill line at (867) 920-8130. A spill amount >100L is considered an immediately reportable spill quantity.
- The licensee is required to submit the NT/NU Spill report form (attached). The form can also be found at <http://env.gov.nu.ca/node/66>
- The licensee shall report all spills to the INAC Manager of Field Operations at (867) 920-4295

2. Cleanup:

- The spill should be contained using the pads/bumpers in the “Emergency Spill Kit”. Once the fuel has been contained in a dam with the bumpers, place the absorbent pads in the pool to soak up the fuel. The spill kit is capable of absorbing one entire drum of fuel (200 litres). Appropriate Personal Protective Equipment (PPE) contained in the spill kit must be worn.
- In the event of a smaller spill (less than 200 litres), the same procedure can be initiated as above although the entire kit may not need to be used.

3. Disposal:

- Once absorbed and cleaned up, the pads and bumpers should be incinerated. Contaminated soil should be dug up and placed in Haz-Mat disposal bags within an approved poly barrel or other appropriate container for shipping offsite where it can be incinerated.
- In the event of a small spill where fuel did not pool on the soil, then absorbent pads will be of no use. In this case the contaminated soil should be removed for incineration.

SPILL CLEANUP EQUIPMENT

An Emergency Spill Kit can be found at the camp fuel cache site, inside the walk-in cooler. It is readily identified by the signage on the poly barrel which contains the kit. Any other equipment that may be useful for cleanup, such as shovels, buckets and hand pumps, can be found in the tool shed (i.e., walk-in cooler).

MONITORING:

The fuel cache should be monitored periodically to ensure that no drums are leaking or seeping. If a drum is found to be leaking, the remaining fuel should be transferred to another empty drum which does not leak. The amount of fuel that has leaked from the drum should be assessed and an appropriate response measure taken. Monitoring activities should be recorded.

IMPORTANT CONTACT INFORMATION

In the event of a spill, the camp supervisor and the facility manager should be contacted immediately. Depending on the volume of the spill, the facility and on-site facility manager(s) will implement an action plan to contain and clean-up the spill.

- Facility Manager (Dr. Jim Leafloor): 204-983-5258 or 204-793-0228
- Environmental Protection, Environment Canada (Iqaluit): 867-979-5981
- 24 Hour Spill Line (NU): 867-920-81309